

F(ab')₂ Anti-Mouse IgG (H&L) (Fluorescein Conjugated) Secondary Antibody
Goat Polyclonal, Fluorescein (FITC)
Catalog # ASR1693**Specification****F(ab')₂ Anti-Mouse IgG (H&L) (Fluorescein Conjugated) Secondary Antibody - Product Information**

Description	F(ab')₂ Anti-MOUSE IgG (H&L) (GOAT) Antibody Fluorescein Conjugated
Host	Goat
Conjugate	Fluorescein (FITC)
FP Value	5.1 moles Fluorescein (FITC) per mole of IgG F(ab')₂
Target Species	Mouse
Clonality	Polyclonal
Application	WB, IF, FC, E, IC
Application Note	ELISA 1:20,000-1:100,000;FLISA 1:10,000-1:50,000;IF Microscopy 1:1,000-1:5,000;FlowCytometry 1:500-1:2,500;Western Blot 1:2,000-1:10,000;Immunochemistry 1:1,000-1:5,000
Physical State	Lyophilized
Host Isotype	IgG F(ab')₂
Target Isotype	IgG (H&L)
Buffer	0.02 M Potassium Phosphate, 0.15 M Sodium Chloride, pH 7.2
Immunogen	Mouse IgG whole molecule
Reconstitution Volume	1.0 mL
Reconstitution Buffer	Restore with deionized water (or equivalent)
Stabilizer	10 mg/mL Bovine Serum Albumin (BSA) - Immunoglobulin and Protease free
Preservative	0.01% (w/v) Sodium Azide

F(ab')₂ Anti-Mouse IgG (H&L) (Fluorescein Conjugated) Secondary Antibody - Additional Information**Shipping Condition**

Ambient

Purity

F(ab')₂ Mouse IgG (H&L) Antibody Fluorescein Conjugated was prepared from monospecific antiserum by immunoaffinity chromatography using Mouse IgG coupled to agarose beads followed by solid phase adsorption(s) to remove any unwanted reactivities, pepsin digestion and chromatographic separation. Assay by immunoelectrophoresis resulted in a single precipitin arc against anti-Fluorescein, anti-Goat Serum, Mouse IgG and Mouse Serum. No reaction was observed against anti-Pepsin or anti-Goat IgG F(c).

Storage Condition

Store vial at 4° C prior to restoration. For extended storage aliquot contents and freeze at -20° C or below. Avoid cycles of freezing and thawing. Centrifuge product if not completely clear after standing at room temperature. This product is stable for several weeks at 4° C as an undiluted liquid. Dilute only prior to immediate use.

Precautions Note

This product is for research use only and is not intended for therapeutic or diagnostic applications.

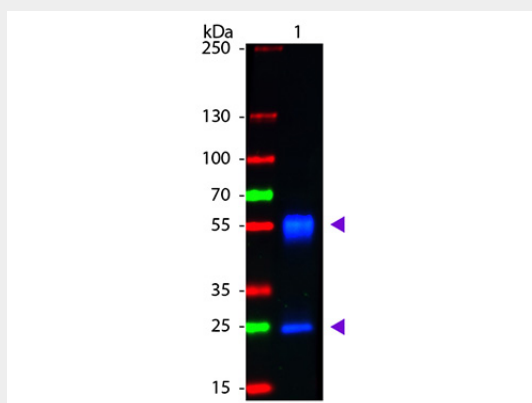
F(ab')₂ Anti-Mouse IgG (H&L) (Fluorescein Conjugated) Secondary Antibody - Protein Information

F(ab')₂ Anti-Mouse IgG (H&L) (Fluorescein Conjugated) Secondary Antibody - Protocols

Provided below are standard protocols that you may find useful for product applications.

- [Western Blot](#)
- [Blocking Peptides](#)
- [Dot Blot](#)
- [Immunohistochemistry](#)
- [Immunofluorescence](#)
- [Immunoprecipitation](#)
- [Flow Cytometry](#)
- [Cell Culture](#)

F(ab')₂ Anti-Mouse IgG (H&L) (Fluorescein Conjugated) Secondary Antibody - Images



Western Blot of Goat anti-Mouse IgG Fluorescein Conjugated Antibody. Lane 1: Mouse IgG. Lane 2: None. Load: 50 ng per lane. Primary antibody: None. Secondary antibody: Fluorescein goat secondary antibody at 1:1,000 for 60 min at RT. Block: MB-070 for 30 min at RT. Predicted/Observed size: 28 & 55 kDa, 28 & 55 kDa for Mouse IgG. Other band(s): None.

F(ab')₂ Anti-Mouse IgG (H&L) (Fluorescein Conjugated) Secondary Antibody - Background

F(ab')₂ Mouse IgG (H&L) Antibody Fluorescein Conjugated is designed for immunofluorescence microscopy, fluorescence based plate assays (FLISA) and fluorescent western blotting. This product is also suitable for multiplex analysis, including multicolor imaging, utilizing various commercial platforms.