

**Anti-Bovine IgG F(ab')<sub>2</sub> (Fluorescein Conjugated) Secondary Antibody**  
**Goat Polyclonal, Fluorescein (FITC)**  
**Catalog # ASR1750****Specification****Anti-Bovine IgG F(ab')<sub>2</sub> (Fluorescein Conjugated) Secondary Antibody - Product Information**

Description	<b>Anti-BOVINE IgG F(ab')<sub>2</sub> (GOAT) Antibody Fluorescein Conjugated</b>
Host	<b>Goat</b>
Conjugate	<b>Fluorescein (FITC)</b>
FP Value	<b>3.1 moles Fluorescein (FITC) per mole of IgG</b>
Target Species	<b>Bovine</b>
Clonality	<b>Polyclonal</b>
Application	<b>,3,4,</b>
Application Note	<b>FLISA 1:10,000-1:50,000;IF Microscopy 1:1,000-1:5,000;FlowCytometry 1:500-1:2,500</b>
Physical State	<b>Lyophilized</b>
Host Isotype	<b>IgG</b>
Target Isotype	<b>IgG F(ab')<sub>2</sub></b>
Buffer	<b>0.01 M Sodium Phosphate, 0.15 M Sodium Chloride, pH 7.2</b>
Immunogen	<b>Bovine IgG F(ab')<sub>2</sub> fragment</b>
Reconstitution Volume	<b>1.0 mL</b>
Reconstitution Buffer	<b>Restore with deionized water (or equivalent)</b>
Stabilizer	<b>10 mg/mL Bovine Serum Albumin (BSA) - Immunoglobulin and Protease free</b>
Preservative	<b>0.01% (w/v) Sodium Azide</b>

**Anti-Bovine IgG F(ab')<sub>2</sub> (Fluorescein Conjugated) Secondary Antibody - Additional Information****Shipping Condition**

Ambient

**Purity**

This product was prepared from monospecific antiserum by immunoaffinity chromatography using Bovine IgG coupled to agarose beads followed by solid phase adsorption(s) to remove any unwanted reactivities. Assay by immunoelectrophoresis resulted in a single precipitin arc against anti-Fluorescein, anti-Goat Serum, Bovine IgG, Bovine IgG F(ab')<sub>2</sub> and Bovine Serum. No reaction was observed against Bovine IgG F(c).

**Storage Condition**

Store vial at 4° C prior to restoration. For extended storage aliquot contents and freeze at -20° C or below. Avoid cycles of freezing and thawing. Centrifuge product if not completely clear after standing at room temperature. This product is stable for several weeks at 4° C as an undiluted liquid. Dilute only prior to immediate use.

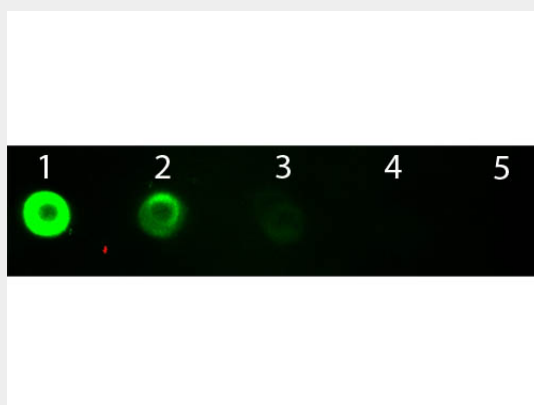
**Precautions Note**

This product is for research use only and is not intended for therapeutic or diagnostic applications.

**Anti-Bovine IgG F(ab')<sub>2</sub> (Fluorescein Conjugated) Secondary Antibody - Protein Information****Anti-Bovine IgG F(ab')<sub>2</sub> (Fluorescein Conjugated) Secondary Antibody - Protocols**

Provided below are standard protocols that you may find useful for product applications.

- [Western Blot](#)
- [Blocking Peptides](#)
- [Dot Blot](#)
- [Immunohistochemistry](#)
- [Immunofluorescence](#)
- [Immunoprecipitation](#)
- [Flow Cytometry](#)
- [Cell Culture](#)

**Anti-Bovine IgG F(ab')<sub>2</sub> (Fluorescein Conjugated) Secondary Antibody - Images**

Dot Blot of Goat anti-Bovine IgG F(ab)<sub>2</sub> Antibody Fluorescein Conjugated. Antigen: Bovine IgG. Load: Lane 1 - 100 ng Lane 2 - 33.3 ng Lane 3 - 11.1 ng Lane 4 - 3.70 ng Lane 5 - 1.23 ng. Primary antibody: n/a. Secondary antibody: Goat anti-Bovine IgG F(ab)<sub>2</sub> Antibody Fluorescein Conjugated at 1:1,000 for 1 HR at RT. Block: MB-070 for 1 HR at RT.

**Anti-Bovine IgG F(ab')<sub>2</sub> (Fluorescein Conjugated) Secondary Antibody - Background**

This product is designed for immunofluorescence microscopy, fluorescence based plate assays (FLISA) and fluorescent western blotting. This product is also suitable for multiplex analysis, including multicolor imaging, utilizing various commercial platforms.