

**Anti-Rat IgM (mu chain) Secondary Antibody**  
**Goat Polyclonal, Unconjugated**  
**Catalog # ASR1825****Specification**

---

**Anti-Rat IgM (mu chain) Secondary Antibody - Product Information**

Description	<b>Anti-RAT IgM (mu chain) (GOAT) Antibody</b>
Host	<b>Goat</b>
Conjugate	<b>Unconjugated</b>
Target Species	<b>Rat</b>
Clonality	<b>Polyclonal</b>
Application	<b>WB, E, IC</b>
Application Note	<b>ELISA 1:80,000;Western Blot 1:1,000to1:10,000;Immunochemistry 1:1,000-1:5,000</b>
Physical State	<b>Liquid (sterile filtered)</b>
Host Isotype	<b>IgG</b>
Target Isotype	<b>IgM <math>\mu</math> chain</b>
Buffer	<b>0.02 M Potassium Phosphate, 0.15 M Sodium Chloride, pH 7.2</b>
Immunogen	<b>Rat IgM mu heavy chain</b>
Stabilizer	<b>None</b>
Preservative	<b>0.01% (w/v) Sodium Azide</b>

**Anti-Rat IgM (mu chain) Secondary Antibody - Additional Information****Shipping Condition**

Wet Ice

**Purity**

Anti-RAT IgM (mu chain) (GOAT) Antibody was prepared from monospecific antiserum by immunoaffinity chromatography using Rat IgM coupled to agarose beads followed by solid phase adsorption(s) to remove any unwanted reactivities. Assay by immunoelectrophoresis resulted in a single precipitin arc against anti-Goat Serum, Rat IgM and Rat Serum. No reaction was observed against Rat IgG or Rat IgA. Specificity was confirmed by ELISA at less than 1% cross reactivity against other rat heavy or light chain isotypes.

**Storage Condition**

Store vial at 4° C prior to opening. This product is stable for several weeks at 4° C as an undiluted liquid. Dilute only prior to immediate use. For extended storage aliquot contents and freeze at -20° C or below. Avoid cycles of freezing and thawing.

**Precautions Note**

This product is for research use only and is not intended for therapeutic or diagnostic applications.

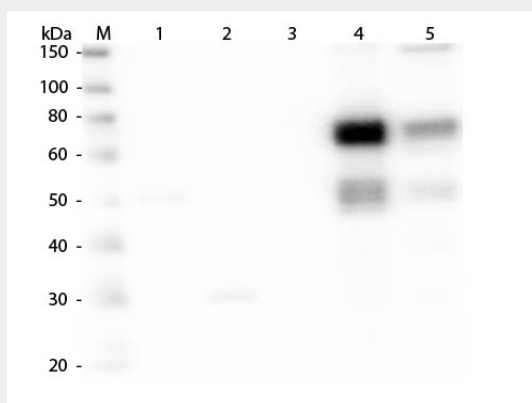
**Anti-Rat IgM (mu chain) Secondary Antibody - Protein Information**

## Anti-Rat IgM (mu chain) Secondary Antibody - Protocols

Provided below are standard protocols that you may find useful for product applications.

- [Western Blot](#)
- [Blocking Peptides](#)
- [Dot Blot](#)
- [Immunohistochemistry](#)
- [Immunofluorescence](#)
- [Immunoprecipitation](#)
- [Flow Cytometry](#)
- [Cell Culture](#)

## Anti-Rat IgM (mu chain) Secondary Antibody - Images



Western Blot of Anti-Rat IgM (mu chain) (GOAT) Antibody . Lane M: 3  $\mu$ l Molecular Ladder. Lane 1: Rat IgG whole molecule . Lane 2: Rat IgG F(c) Fragment . Lane 3: Rat IgG F(ab) Fragment . Lane 4: Rat IgM Whole Molecule . Lane 5: Rat Serum . All samples were reduced. Load: 50 ng per lane. Block: MB-070 for 30 min at RT. Primary Antibody: Anti-Rat IgM (mu chain) (GOAT) Antibody 1:1,000 for 60 min at RT. Secondary Antibody: Anti-Goat IgG (DONKEY) Peroxidase Conjugated Antibody 1:40,000 in MB-070 for 30 min at RT. Predicted/Obsevered Size: 25 and 55 kDa for Rat IgG and Serum, 25 kDa for F(c) and F(ab), 78 and 25 kDa for IgM. Rat F(c) migrates slightly higher.

## Anti-Rat IgM (mu chain) Secondary Antibody - Background

Rat IgM antibody recognizes the mu chain of the Rat IgM. Assay by immunoelectrophoresis resulted in a single precipitin arc against anti-Biotin, anti-Rabbit Serum, Rat IgM and Rat Serum. No reaction was observed against Rat IgA or Rat IgG. ELISA was used to confirm specificity at less than 1% cross reactivity against other rat heavy or light chain isotypes. Anti-Rat IgM antibody is ideal with investigators involved in serum component protein research.