

F(ab')₂ Anti-Rabbit IgG F(ab')₂ (Fluorescein Conjugated) Pre-Adsorbed Secondary Antibody
Goat Polyclonal, Fluorescein (FITC)
Catalog # ASR1861

Specification

F(ab')₂ Anti-Rabbit IgG F(ab')₂ (Fluorescein Conjugated) Pre-Adsorbed Secondary Antibody - Product Information

Description	F(ab')₂ Anti-RABBIT IgG F(ab')₂ (GOAT) Antibody Fluorescein Conjugated Min X Bv Hs Hu Ms Rt & Sh Serum Proteins
Host	Goat
Conjugate	Fluorescein (FITC)
FP Value	4.3 moles Fluorescein (FITC) per mole of IgG F(ab')₂
Target Species	Rabbit
Clonality	Polyclonal
Application	,3,4,
Application Note	FLISA 1:10,000-1:50,000;IF Microscopy 1:1,000-1:5,000;FlowCytometry 1:500-1:2,500
Physical State	Lyophilized
Host Isotype	IgG F(ab')₂
Target Isotype	IgG F(ab')₂
Buffer	0.02 M Potassium Phosphate, 0.15 M Sodium Chloride, pH 7.2
Immunogen	Rabbit IgG F(ab')₂ fragment
Reconstitution Volume	500 µL
Reconstitution Buffer	Restore with deionized water (or equivalent)
Stabilizer	10 mg/mL Bovine Serum Albumin (BSA) - Immunoglobulin and Protease free
Preservative	0.01% (w/v) Sodium Azide

F(ab')₂ Anti-Rabbit IgG F(ab')₂ (Fluorescein Conjugated) Pre-Adsorbed Secondary Antibody - Additional Information

Shipping Condition

Ambient

Purity

This product was prepared from monospecific antiserum by immunoaffinity chromatography using Rabbit IgG coupled to agarose beads followed by solid phase adsorption(s) to remove any unwanted reactivities, pepsin digestion and chromatographic separation. Assay by immunoelectrophoresis resulted in a single precipitin arc against anti-Fluorescein, anti-Goat Serum, Rabbit IgG, Rabbit IgG F(ab')₂ and Rabbit Serum. No reaction was observed against anti-Pepsin, anti-Goat IgG F(c), Rabbit IgG F(c) or Bovine, Horse, Human, Mouse, Rat and Sheep Serum Proteins.

Storage Condition

Store vial at 4° C prior to restoration. For extended storage aliquot contents and freeze at -20° C or below. Avoid cycles of freezing and thawing. Centrifuge product if not completely clear after standing at room temperature. This product is stable for several weeks at 4° C as an undiluted liquid. Dilute only prior to immediate use.

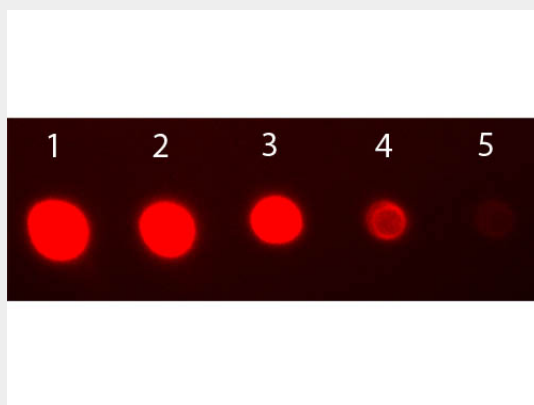
Precautions Note

This product is for research use only and is not intended for therapeutic or diagnostic applications.

F(ab')₂ Anti-Rabbit IgG F(ab')₂ (Fluorescein Conjugated) Pre-Adsorbed Secondary Antibody - Protein Information**F(ab')₂ Anti-Rabbit IgG F(ab')₂ (Fluorescein Conjugated) Pre-Adsorbed Secondary Antibody - Protocols**

Provided below are standard protocols that you may find useful for product applications.

- [Western Blot](#)
- [Blocking Peptides](#)
- [Dot Blot](#)
- [Immunohistochemistry](#)
- [Immunofluorescence](#)
- [Immunoprecipitation](#)
- [Flow Cytometry](#)
- [Cell Culture](#)

F(ab')₂ Anti-Rabbit IgG F(ab')₂ (Fluorescein Conjugated) Pre-Adsorbed Secondary Antibody - Images

Dot Blot of Rabbit IgG F(ab')₂ Antibody Fluorescein Conjugated. Antigen: Rabbit IgG. Load: Lane 1 - 50 ng Lane 2 - 16.67 ng Lane 3 - 5.56 ng Lane 4 - 1.85 ng Lane 5 - 0.62 ng. Primary antibody: none. Secondary antibody: Rabbit IgG F(ab')₂ Antibody Fluorescein Conjugated at 1:1,000 in MB-070 for 60 min at RT. Block: MB-070 for 60 min at RT.

F(ab')₂ Anti-Rabbit IgG F(ab')₂ (Fluorescein Conjugated) Pre-Adsorbed Secondary Antibody - Background

This product is designed for immunofluorescence microscopy, fluorescence based plate assays (FLISA) and fluorescent western blotting. This product is also suitable for multiplex analysis,

including multicolor imaging, utilizing various commercial platforms.