

**Rat IgG (Agarose Conjugated)**  
**Catalog # ASR1874****Specification**

---

**Rat IgG (Agarose Conjugated) - Product Information**

Description	<b>RAT IgG whole molecule Agarose Conjugated</b>
Conjugate	<b>Unconjugated</b>
Physical State	<b>Suspension of agarose beads</b>
Buffer	<b>0.02 M Potassium Phosphate, 0.15 M Sodium Chloride, pH 7.2</b>
Species of Origin	<b>Rat</b>
Stabilizer	<b>None</b>
Preservative	<b>0.01% (w/v) Sodium Azide</b>

**Rat IgG (Agarose Conjugated) - Additional Information****Shipping Condition**

Wet Ice

**Purity**

This product is normal Rat IgG coupled to activated agarose. A single precipitin arc was observed against anti-Rat Serum when assayed by immunoelectrophoresis prior to coupling to the beads. Sufficient capacity is provided to bind a minimum of 10 mg of anti-Rat IgG.

**Storage Condition**

Store vial at 4° C prior to opening. DO NOT FREEZE.

**Precautions Note**

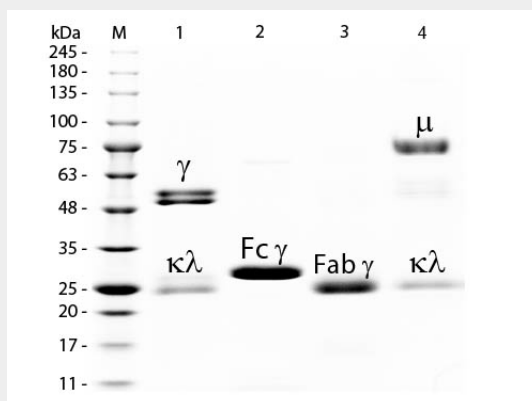
This product is for research use only and is not intended for therapeutic or diagnostic applications.

**Rat IgG (Agarose Conjugated) - Protein Information****Rat IgG (Agarose Conjugated) - Protocols**

Provided below are standard protocols that you may find useful for product applications.

- [Western Blot](#)
- [Blocking Peptides](#)
- [Dot Blot](#)
- [Immunohistochemistry](#)
- [Immunofluorescence](#)
- [Immunoprecipitation](#)
- [Flow Cytometry](#)
- [Cell Culture](#)

**Rat IgG (Agarose Conjugated) - Images**



SDS-PAGE of Rat IgG Whole Molecule Agarose Conjugated . Lane M: 3  $\mu$ L Opal Prestained Marker . Lane 1: Reduced Rat IgG Whole Molecule Agarose Conjugated . Lane 2: Reduced Rat IgG F(c) Fragment . Lane 3: Reduced Rat IgG F(ab) Fragment . Lane 4: Reduced Rat IgM Whole Molecule . Load: 1  $\mu$ g of IgG, F(c), F(ab); 1.5  $\mu$ g of IgM. Predicted/Observed size: IgG at 55 and 25 kDa; F(c) at 25 kDa; F(ab) at 25 kDa; IgM at 78 and 25 kDa. Observed F(c) Fragment migrates slightly higher.