

Anti-Human IgG F(c) (Rhodamine Conjugated) Pre-Adsorbed Secondary Antibody
Goat Polyclonal, Rhodamine (TRITC)
Catalog # ASR1915

Specification

Anti-Human IgG F(c) (Rhodamine Conjugated) Pre-Adsorbed Secondary Antibody - Product Information

Description	Anti-HUMAN IgG F(c) (GOAT) Antibody
Host	Rhodamine Conjugated Min X MOUSE
Conjugate	Serum Proteins
FP Value	Goat
Target Species	Rhodamine (TRITC)
Clonality	2.9 moles Rhodamine (TRITC) per mole of IgG
Application	Human
Application Note	Polyclonal
	,3,4,
	FLISA 1:10,000-1:50,000;IF Microscopy
	1:1,000-1:5,000;FlowCytometry
	1:500-1:2,500
Physical State	Lyophilized
Host Isotype	IgG
Target Isotype	IgG F(c)
Buffer	0.02 M Potassium Phosphate, 0.15 M Sodium Chloride, pH 7.2
Immunogen	Human IgG F(c) fragment
Reconstitution Volume	1.0 mL
Reconstitution Buffer	Restore with deionized water (or equivalent)
Stabilizer	10 mg/mL Bovine Serum Albumin (BSA) - Immunoglobulin and Protease free
Preservative	0.01% (w/v) Sodium Azide

Anti-Human IgG F(c) (Rhodamine Conjugated) Pre-Adsorbed Secondary Antibody - Additional Information

Shipping Condition

Ambient

Purity

This product was prepared from monospecific antiserum by immunoaffinity chromatography using Human IgG coupled to agarose beads followed by solid phase adsorption(s) to remove any unwanted reactivities. Assay by immunoelectrophoresis resulted in a single precipitin arc against anti-Goat Serum, Human IgG, Human IgG F(c) and Human Serum. No reaction was observed against Human IgG F(ab')₂ or Mouse Serum Proteins. Specificity was confirmed by ELISA minimal cross reactivity against Mouse IgG.

Storage Condition

Store vial at 4° C prior to restoration. For extended storage aliquot contents and freeze at -20° C or below. Avoid cycles of freezing and thawing. Centrifuge product if not completely clear after

standing at room temperature. This product is stable for several weeks at 4° C as an undiluted liquid. Dilute only prior to immediate use.

Precautions Note

This product is for research use only and is not intended for therapeutic or diagnostic applications.

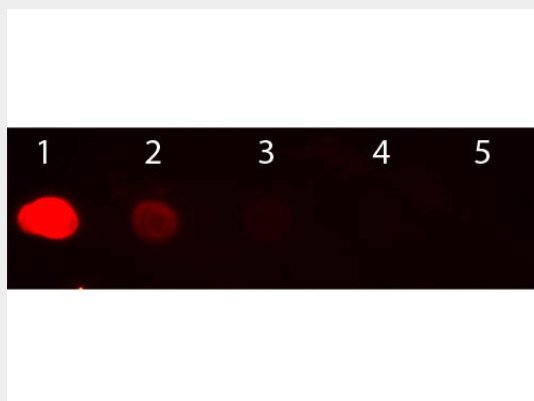
Anti-Human IgG F(c) (Rhodamine Conjugated) Pre-Adsorbed Secondary Antibody - Protein Information

Anti-Human IgG F(c) (Rhodamine Conjugated) Pre-Adsorbed Secondary Antibody - Protocols

Provided below are standard protocols that you may find useful for product applications.

- [Western Blot](#)
- [Blocking Peptides](#)
- [Dot Blot](#)
- [Immunohistochemistry](#)
- [Immunofluorescence](#)
- [Immunoprecipitation](#)
- [Flow Cytometry](#)
- [Cell Culture](#)

Anti-Human IgG F(c) (Rhodamine Conjugated) Pre-Adsorbed Secondary Antibody - Images



Dot Blot of Goat anti-Human IgG Fc Antibody Rhodamine Conjugated. Antigen: Human IgG. Load: Lane 1 - 100 ng Lane 2 - 33.3 ng Lane 3 - 11.1 ng Lane 4 - 3.70 ng Lane 5 - 1.23 ng. Primary antibody: n/a. Secondary antibody: Goat anti-Human IgG Fc Antibody Rhodamine Conjugated at 1:1,000 for 60 min at RT. Block: MB-070 for 1 HR at RT.

Anti-Human IgG F(c) (Rhodamine Conjugated) Pre-Adsorbed Secondary Antibody - Background

This product is designed for immunofluorescence microscopy, fluorescence based plate assays (FLISA) and fluorescent western blotting. This product is also suitable for multiplex analysis, including multicolor imaging, utilizing various commercial platforms.