

**Anti-Human IgG IgA IgM (H&L) (Fluorescein Conjugated) Secondary Antibody**  
**Goat Polyclonal, Fluorescein (FITC)**  
**Catalog # ASR1918****Specification****Anti-Human IgG IgA IgM (H&L) (Fluorescein Conjugated) Secondary Antibody - Product Information**

Description	<b>Anti-HUMAN IgG IgA IgM (H&amp;L) (GOAT) Antibody Fluorescein Conjugated</b>
Host	<b>Goat</b>
Conjugate	<b>Fluorescein (FITC)</b>
FP Value	<b>5.1 moles Fluorescein (FITC) per mole of IgG</b>
Target Species	<b>Human</b>
Clonality	<b>Polyclonal</b>
Application	<b>,3,4,</b>
Application Note	<b>FLISA 1:10,000-1:50,000;IF Microscopy 1:1,000-1:5,000;FlowCytometry 1:500-1:2,500</b>
Physical State	<b>Lyophilized</b>
Host Isotype	<b>IgG</b>
Target Isotype	<b>IgG IgA IgM</b>
Buffer	<b>0.02 M Potassium Phosphate, 0.15 M Sodium Chloride, pH 7.2</b>
Immunogen	<b>Human IgG, IgA and IgM whole molecules</b>
Reconstitution Volume	<b>1.0 mL</b>
Reconstitution Buffer	<b>Restore with deionized water (or equivalent)</b>
Stabilizer	<b>10 mg/mL Bovine Serum Albumin (BSA) - Immunoglobulin and Protease free</b>
Preservative	<b>0.01% (w/v) Sodium Azide</b>

**Anti-Human IgG IgA IgM (H&L) (Fluorescein Conjugated) Secondary Antibody - Additional Information****Shipping Condition****Ambient****Purity**

This product was prepared from polyspecific antiserum by immunoaffinity chromatography using antigens coupled to agarose beads. Assay by immunoelectrophoresis resulted in a single precipitin arc against anti-Fluorescein, anti-Goat Serum, Human IgG, Human IgA and Human IgM. This reagent is suitable for the detection of all Human isotypes and chain combinations.

**Storage Condition**

Store vial at 4° C prior to restoration. For extended storage aliquot contents and freeze at -20° C or below. Avoid cycles of freezing and thawing. Centrifuge product if not completely clear after standing at room temperature. This product is stable for several weeks at 4° C as an undiluted liquid. Dilute only prior to immediate use.

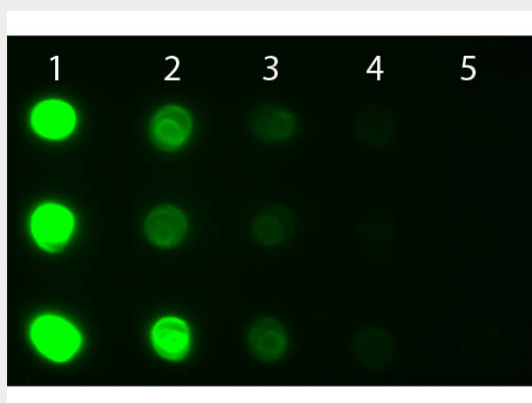
**Precautions Note**

This product is for research use only and is not intended for therapeutic or diagnostic applications.

**Anti-Human IgG IgA IgM (H&L) (Fluorescein Conjugated) Secondary Antibody - Protein Information****Anti-Human IgG IgA IgM (H&L) (Fluorescein Conjugated) Secondary Antibody - Protocols**

Provided below are standard protocols that you may find useful for product applications.

- [Western Blot](#)
- [Blocking Peptides](#)
- [Dot Blot](#)
- [Immunohistochemistry](#)
- [Immunofluorescence](#)
- [Immunoprecipitation](#)
- [Flow Cytometry](#)
- [Cell Culture](#)

**Anti-Human IgG IgA IgM (H&L) (Fluorescein Conjugated) Secondary Antibody - Images**

Dot Blot of Goat anti-Human IgG IgA IgM Antibody Fluorescein Conjugated. Antigen: Row 1 - Human IgG Row 2 - Human IgA Row 3 - Human IgM. Load: Lane 1 - 100 ng Lane 2 - 33.3 ng Lane 3 - 11.1 ng Lane 4 - 3.70 ng Lane 5 - 1.23 ng. Primary antibody: n/a. Secondary antibody: Goat anti-Human IgG IgA IgM Antibody Fluorescein Conjugated at 1:1,000 for 60 min at RT. Block: MB-070 for 60 min at RT.

**Anti-Human IgG IgA IgM (H&L) (Fluorescein Conjugated) Secondary Antibody - Background**

This product is designed for immunofluorescence microscopy, fluorescence based plate assays (FLISA) and fluorescent western blotting. This product is also suitable for multiplex analysis, including multicolor imaging, utilizing various commercial platforms.