

F(ab')₂ Anti-Rat IgG (H&L) (Texas Red™ Conjugated) Secondary Antibody
Goat Polyclonal, Texas Red®
Catalog # ASR1980**Specification****F(ab')₂ Anti-Rat IgG (H&L) (Texas Red™ Conjugated) Secondary Antibody - Product Information**

| | |
|-----------------------|--|
| Description | F(ab')₂ Anti-RAT IgG [H&L] (GOAT) Antibody Texas Red™ Conjugated |
| Host | Goat |
| Conjugate | Texas Red® |
| FP Value | 4.6 moles Texas Red® per mole of IgG F(ab')₂ |
| Target Species | Rat |
| Clonality | Polyclonal |
| Application | IF |
| Application Note | IF Microscopy 1:500-1:2,500 |
| Physical State | Lyophilized |
| Host Isotype | IgG F(ab')₂ |
| Target Isotype | IgG (H&L) |
| Buffer | 0.02 M Potassium Phosphate, 0.15 M Sodium Chloride, pH 7.2 |
| Immunogen | Rat IgG whole molecule |
| Reconstitution Volume | 500 µL |
| Reconstitution Buffer | Restore with deionized water (or equivalent) |
| Stabilizer | 10 mg/mL Bovine Serum Albumin (BSA) - Immunoglobulin and Protease free |
| Preservative | 0.01% (w/v) Sodium Azide |

F(ab')₂ Anti-Rat IgG (H&L) (Texas Red™ Conjugated) Secondary Antibody - Additional Information**Shipping Condition**

Ambient

Purity

This product was prepared from monospecific antiserum by immunoaffinity chromatography using Rat IgG coupled to agarose beads followed by solid phase adsorption(s) to remove any unwanted reactivities, pepsin digestion and chromatographic separation. Assay by immunoelectrophoresis resulted in a single precipitin arc against anti-Goat Serum, Rat IgG and Rat Serum. No reaction was observed against anti-Pepsin or anti-Goat IgG F(c).

Storage Condition

Store vial at 4° C prior to restoration. For extended storage aliquot contents and freeze at -20° C or below. Avoid cycles of freezing and thawing. Centrifuge product if not completely clear after standing at room temperature. This product is stable for several weeks at 4° C as an undiluted liquid. Dilute only prior to immediate use.

Precautions Note

This product is for research use only and is not intended for therapeutic or diagnostic applications.

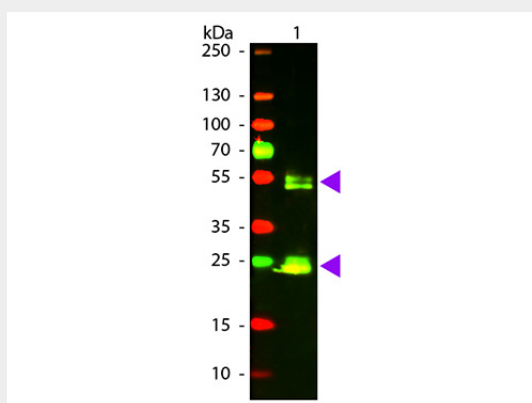
F(ab')₂ Anti-Rat IgG (H&L) (Texas Red™ Conjugated) Secondary Antibody - Protein Information

F(ab')₂ Anti-Rat IgG (H&L) (Texas Red™ Conjugated) Secondary Antibody - Protocols

Provided below are standard protocols that you may find useful for product applications.

- [Western Blot](#)
- [Blocking Peptides](#)
- [Dot Blot](#)
- [Immunohistochemistry](#)
- [Immunofluorescence](#)
- [Immunoprecipitation](#)
- [Flow Cytometry](#)
- [Cell Culture](#)

F(ab')₂ Anti-Rat IgG (H&L) (Texas Red™ Conjugated) Secondary Antibody - Images



Western Blot of Goat anti-Rat IgG Texas Red Conjugated Antibody. Lane 1: Rat IgG. Lane 2: None. Load: 50 ng per lane. Primary antibody: None. Secondary antibody: Texas Red goat secondary antibody at 1:1,000 for 60 min at RT. Block: MB-070 for 30 min at RT. Predicted/Observed size: 28 & 55 kDa, 28 & 55 kDa for Rat IgG. Other band(s): None.

F(ab')₂ Anti-Rat IgG (H&L) (Texas Red™ Conjugated) Secondary Antibody - Background

This product is designed for immunofluorescence microscopy, fluorescence based plate assays (FLISA) and fluorescent western blotting. This product is also suitable for multiplex analysis, including multicolor imaging, utilizing various commercial platforms.