

**Fab Anti-Human IgG (H&L) (Rhodamine Conjugated) Secondary Antibody**  
**Rabbit Polyclonal, Rhodamine (TRITC)**  
**Catalog # ASR1993****Specification****Fab Anti-Human IgG (H&L) (Rhodamine Conjugated) Secondary Antibody - Product Information**

Description	<b>F(ab) Anti-HUMAN IgG (H&amp;L) (RABBIT) Antibody Rhodamine Conjugated</b>
Host	<b>Rabbit</b>
Conjugate	<b>Rhodamine (TRITC)</b>
FP Value	<b>1.3 moles Rhodamine (TRITC) per mole of IgG F(ab)</b>
Target Species	<b>Human</b>
Clonality	<b>Polyclonal</b>
Application	<b>,3,4,</b>
Application Note	<b>FLISA 1:10,000-1:50,000;IF Microscopy 1:1,000-1:5,000;FlowCytometry 1:500-1:2,500</b>
Physical State	<b>Lyophilized</b>
Host Isotype	<b>IgG F(ab)</b>
Target Isotype	<b>IgG (H&amp;L)</b>
Buffer	<b>0.02 M Potassium Phosphate, 0.15 M Sodium Chloride, pH 7.2</b>
Immunogen	<b>Human IgG whole molecule</b>
Reconstitution Volume	<b>500 µL</b>
Reconstitution Buffer	<b>Restore with deionized water (or equivalent)</b>

**Fab Anti-Human IgG (H&L) (Rhodamine Conjugated) Secondary Antibody - Additional Information****Shipping Condition**

Ambient

**Purity**

This product was prepared from monospecific antiserum by immunoaffinity chromatography using Human IgG coupled to agarose beads followed by solid phase adsorption(s) to remove any unwanted reactivities, papain digestion and chromatographic separation. Assay by immunoelectrophoresis resulted in a single precipitin arc against anti-Fluorescein and anti-Goat Serum. No reaction was observed against anti-Papain or anti-Rabbit IgG F(c).

**Storage Condition**

Store vial at 4° C prior to restoration. For extended storage aliquot contents and freeze at -20° C or below. Avoid cycles of freezing and thawing. Centrifuge product if not completely clear after standing at room temperature. This product is stable for several weeks at 4° C as an undiluted liquid. Dilute only prior to immediate use.

**Precautions Note**

This product is for research use only and is not intended for therapeutic or diagnostic applications.

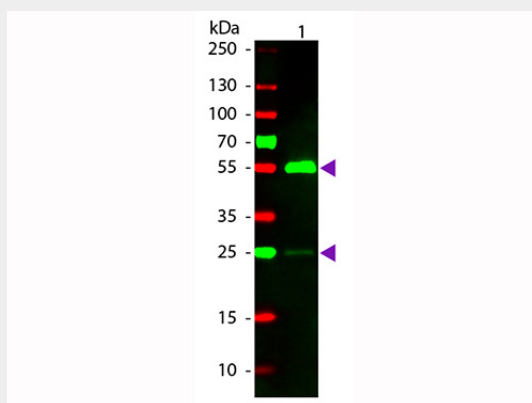
## **Fab Anti-Human IgG (H&L) (Rhodamine Conjugated) Secondary Antibody - Protein Information**

### **Fab Anti-Human IgG (H&L) (Rhodamine Conjugated) Secondary Antibody - Protocols**

Provided below are standard protocols that you may find useful for product applications.

- [Western Blot](#)
- [Blocking Peptides](#)
- [Dot Blot](#)
- [Immunohistochemistry](#)
- [Immunofluorescence](#)
- [Immunoprecipitation](#)
- [Flow Cytometry](#)
- [Cell Culture](#)

### **Fab Anti-Human IgG (H&L) (Rhodamine Conjugated) Secondary Antibody - Images**



Western blot of Rhodamine conjugated Rabbit F(ab) Anti-Human IgG secondary antibody. Lane 1: Human IgG. Lane 2: None. Load: 50 ng per lane. Primary antibody: None. Secondary antibody: Rhodamine rabbit secondary antibody at 1:1,000 for 60 min at RT. Blocking: MB-070 for 30 min at RT. Predicted/Observed size: 25 & 55 kDa, 25 & 55 kDa for Human IgG. Other band(s): None.

### **Fab Anti-Human IgG (H&L) (Rhodamine Conjugated) Secondary Antibody - Background**

This product is designed for immunofluorescence microscopy, fluorescence based plate assays (FLISA) and fluorescent western blotting. This product is also suitable for multiplex analysis, including multicolor imaging, utilizing various commercial platforms.