

**Anti-GOAT IgG (H&L) (Alkaline Phosphatase Conjugated) Secondary Antibody**  
**Rabbit Polyclonal, Alkaline Phosphatase (Calf Intestine)**  
**Catalog # ASR2030****Specification****Anti-GOAT IgG (H&L) (Alkaline Phosphatase Conjugated) Secondary Antibody - Product Information**

Description	<b>Anti-GOAT IgG (H&amp;L) (RABBIT) Antibody</b>
Host	<b>Alkaline Phosphatase Conjugated</b>
Conjugate	<b>Rabbit</b>
Target Species	<b>Alkaline Phosphatase (Calf Intestine)</b>
Clonality	<b>Goat</b>
Application	<b>Polyclonal</b>
Application Note	<b>WB, E, IC</b>
	<b>ELISA 1:2,000-1:13,000;Western Blot</b>
	<b>1:500-1:2,500;Immunochemistry</b>
	<b>1:200-1:1,000</b>
Physical State	<b>Liquid (sterile filtered)</b>
Host Isotype	<b>IgG</b>
Target Isotype	<b>IgG (H&amp;L)</b>
Buffer	<b>0.05 M Tris Chloride, 0.15M Sodium Chloride, 0.001M Magnesium Chloride, 0.0001M Zinc Chloride, 50% (v/v) Glycerol; pH 8.0</b>
Immunogen	<b>Goat IgG whole molecule</b>
Stabilizer	<b>10 mg/mL Bovine Serum Albumin (BSA) - Immunoglobulin and Protease free</b>
Preservative	<b>0.1% (w/v) Sodium Azide</b>

**Anti-GOAT IgG (H&L) (Alkaline Phosphatase Conjugated) Secondary Antibody - Additional Information****Shipping Condition**

Wet Ice

**Purity**

Anti-Goat Secondary Antibody was prepared from monospecific antiserum by immunoaffinity chromatography using Goat IgG coupled to agarose beads followed by solid phase adsorption(s) to remove any unwanted reactivities. Assay by immunoelectrophoresis resulted in a single precipitin arc against anti-Alkaline Phosphatase (calf intestine), anti-Rabbit Serum, Goat IgG and Goat Serum.

**Storage Condition**

Store secondary antibody at 4° C before opening. DO NOT FREEZE. Anti-Goat secondary antibodies are stable at 4° C as an undiluted liquid. Dilute only prior to immediate use. Freezing alkaline phosphatase conjugates will result in a substantial loss of enzymatic activity.

**Precautions Note**

This product is for research use only and is not intended for therapeutic or diagnostic applications.

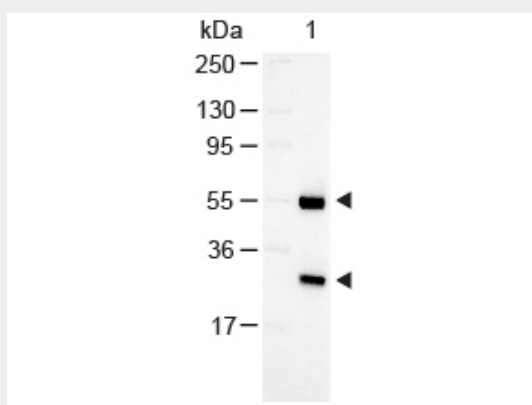
## Anti-GOAT IgG (H&L) (Alkaline Phosphatase Conjugated) Secondary Antibody - Protein Information

## Anti-GOAT IgG (H&L) (Alkaline Phosphatase Conjugated) Secondary Antibody - Protocols

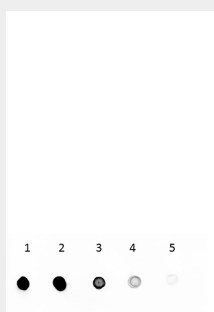
Provided below are standard protocols that you may find useful for product applications.

- [Western Blot](#)
- [Blocking Peptides](#)
- [Dot Blot](#)
- [Immunohistochemistry](#)
- [Immunofluorescence](#)
- [Immunoprecipitation](#)
- [Flow Cytometry](#)
- [Cell Culture](#)

## Anti-GOAT IgG (H&L) (Alkaline Phosphatase Conjugated) Secondary Antibody - Images



Western Blot of Rabbit anti-Goat Antibody Alkaline Phosphatase Conjugated Lane 1: Goat IgG Load: 100 ng per lane Secondary antibody: Alkaline Phosphatase Conjugated Rabbit Anti-Goat Antibody at 1:1000 for 60 min at RT Block: MB-070 30 min RT Predicted/Observed size: 55 and 28 kDa, 55 and 28 kDa



Dot Blot of Goat IgG (H&L) Secondary Antibody Alkaline Phosphatase Conjugated Antigen: Goat IgG Load: Lane 1 - 200ng Lane 2 - 66.7ng Lane 3 - 22.2ng Lane 4 - 7.4ng Lane 5 - 2.5ng Primary antibody: none Secondary antibody: Goat IgG (H&L) Secondary Antibody Alkaline Phosphatase Conjugated at 1:1,000 for 60 min at RT. Detected using Alkaline Phosphatase Substrate. Block: MB-070 60 min at RT.

#### **Anti-GOAT IgG (H&L) (Alkaline Phosphatase Conjugated) Secondary Antibody - Background**

Secondary Antibodies are available in a variety of formats and conjugate types. When choosing a secondary antibody product, consideration must be given to species and immunoglobulin specificity, conjugate type, fragment and chain specificity, level of cross-reactivity, and host-species source and fragment composition.