

Anti-Sheep IgG (H&L) (Fluorescein Conjugated) Pre-Adsorbed Secondary Antibody
Rabbit Polyclonal, Fluorescein (FITC)
Catalog # ASR2061**Specification****Anti-Sheep IgG (H&L) (Fluorescein Conjugated) Pre-Adsorbed Secondary Antibody - Product Information**

Description	Anti-SHEEP IgG (H&L) (RABBIT) Antibody Fluorescein Conjugated (Min X Human Serum Proteins)
Host	Rabbit
Conjugate	Fluorescein (FITC)
FP Value	3.0 moles Fluorescein (FITC) per mole of IgG
Target Species	Sheep
Clonality	Polyclonal
Application	IF, FC
Application Note	FLISA 1:10,000-1:50,000;IF Microscopy 1:1,000-1:5,000;FlowCytometry 1:500-1:2,500
Physical State	Lyophilized
Host Isotype	IgG
Target Isotype	IgG (H&L)
Buffer	0.02 M Potassium Phosphate, 0.15 M Sodium Chloride, pH 7.2
Immunogen	Sheep IgG whole molecule
Reconstitution Volume	1.0 mL
Reconstitution Buffer	Restore with deionized water (or equivalent)
Stabilizer	10 mg/mL Bovine Serum Albumin (BSA) - Immunoglobulin and Protease free
Preservative	0.01% (w/v) Sodium Azide

Anti-Sheep IgG (H&L) (Fluorescein Conjugated) Pre-Adsorbed Secondary Antibody - Additional Information**Shipping Condition**

Ambient

Purity

Sheep IgG (H&L) Secondary Antibody Fluorescein Conjugated (Pre-Adsorbed) was prepared from monospecific antiserum by immunoaffinity chromatography using Sheep IgG coupled to agarose beads followed by solid phase adsorption(s) to remove any unwanted reactivities. Assay by immunoelectrophoresis resulted in a single precipitin arc against anti-Fluorescein, anti-Rabbit Serum, Sheep IgG and Sheep Serum. No reaction was observed against Human Serum Proteins.

Storage Condition

Store Secondary Antibody at 4° C prior to restoration. For extended storage aliquot antibody and freeze at -20° C or below. Avoid cycles of freezing and thawing. Centrifuge product if not completely clear after standing at room temperature. This product is stable for several weeks at

4° C as an undiluted liquid. Dilute only prior to immediate use.

Precautions Note

This product is for research use only and is not intended for therapeutic or diagnostic applications.

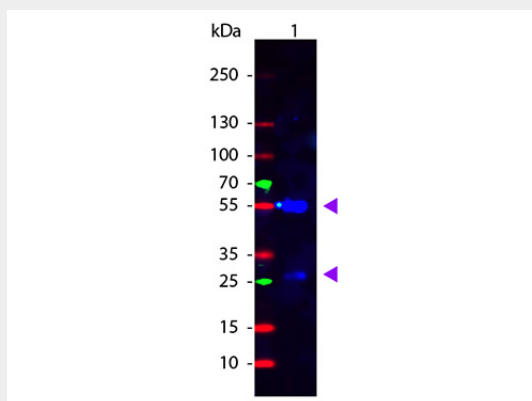
Anti-Sheep IgG (H&L) (Fluorescein Conjugated) Pre-Adsorbed Secondary Antibody - Protein Information

Anti-Sheep IgG (H&L) (Fluorescein Conjugated) Pre-Adsorbed Secondary Antibody - Protocols

Provided below are standard protocols that you may find useful for product applications.

- [Western Blot](#)
- [Blocking Peptides](#)
- [Dot Blot](#)
- [Immunohistochemistry](#)
- [Immunofluorescence](#)
- [Immunoprecipitation](#)
- [Flow Cytometry](#)
- [Cell Culture](#)

Anti-Sheep IgG (H&L) (Fluorescein Conjugated) Pre-Adsorbed Secondary Antibody - Images



Western Blot of Rabbit anti-Sheep IgG Fluorescein Conjugated Antibody. Lane 1: Sheep IgG. Lane 2: None. Load: 50 ng per lane. Primary antibody: None. Secondary antibody: Fluorescein rabbit secondary antibody at 1:1,000 for 60 min at RT. Block: MB-070 for 30 min at RT. Predicted/Observed size: 28 & 55 kDa, 28 & 55 kDa for Sheep IgG. Other band(s): None.

Anti-Sheep IgG (H&L) (Fluorescein Conjugated) Pre-Adsorbed Secondary Antibody - Background

FITC Conjugated Secondary Antibody is designed for flow cytometry, immunofluorescence microscopy, fluorescence based plate assays (FLISA) and fluorescent western blotting. This product is also suitable for multiplex analysis, including multicolor imaging, utilizing various commercial platforms.