

F(ab')₂ Anti-Bovine IgG (H&L) (Texas Red™ Conjugated) Secondary Antibody
Rabbit Polyclonal, Texas Red®
Catalog # ASR2066**Specification****F(ab')₂ Anti-Bovine IgG (H&L) (Texas Red™ Conjugated) Secondary Antibody - Product Information**

Description	F(ab')₂ Anti-BOVINE IgG [H&L] (RABBIT) Antibody Texas Red™ Conjugated
Host	Rabbit
Conjugate	Texas Red®
FP Value	1.6 moles Texas Red® per mole of IgG
Target Species	F(ab')₂ Bovine
Clonality	Polyclonal
Application	IF
Application Note	IF Microscopy 1:500-1:2,500
Physical State	Lyophilized
Host Isotype	IgG F(ab')₂
Target Isotype	IgG (H&L)
Buffer	0.02 M Potassium Phosphate, 0.15 M Sodium Chloride, pH 7.2
Immunogen	Bovine IgG whole molecule
Reconstitution Volume	500 µL
Reconstitution Buffer	Restore with deionized water (or equivalent)

F(ab')₂ Anti-Bovine IgG (H&L) (Texas Red™ Conjugated) Secondary Antibody - Additional Information**Shipping Condition**

Ambient

Purity

This product was prepared from monospecific antiserum by immunoaffinity chromatography using Bovine IgG coupled to agarose beads followed by solid phase adsorption(s) to remove any unwanted reactivities, pepsin digestion and chromatographic separation. Assay by immunoelectrophoresis resulted in a single precipitin arc against anti-Rabbit Serum, Bovine IgG and Bovine Serum. No reaction was observed against anti-Pepsin or anti-Rabbit IgG F(c).

Storage Condition

Store vial at 4° C prior to restoration. For extended storage aliquot contents and freeze at -20° C or below. Avoid cycles of freezing and thawing. Centrifuge product if not completely clear after standing at room temperature. This product is stable for several weeks at 4° C as an undiluted liquid. Dilute only prior to immediate use.

Precautions Note

This product is for research use only and is not intended for therapeutic or diagnostic applications.

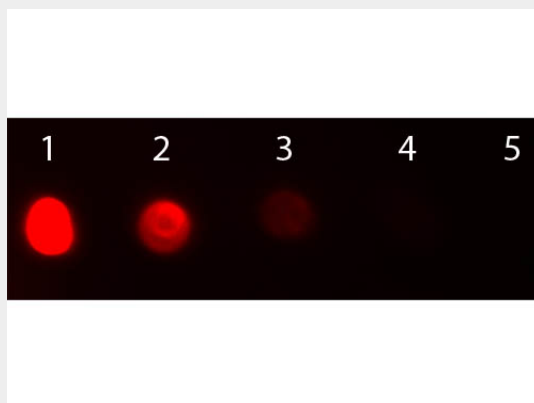
F(ab')₂ Anti-Bovine IgG (H&L) (Texas Red™ Conjugated) Secondary Antibody - Protein Information

F(ab')₂ Anti-Bovine IgG (H&L) (Texas Red™ Conjugated) Secondary Antibody - Protocols

Provided below are standard protocols that you may find useful for product applications.

- [Western Blot](#)
- [Blocking Peptides](#)
- [Dot Blot](#)
- [Immunohistochemistry](#)
- [Immunofluorescence](#)
- [Immunoprecipitation](#)
- [Flow Cytometry](#)
- [Cell Culture](#)

F(ab')₂ Anti-Bovine IgG (H&L) (Texas Red™ Conjugated) Secondary Antibody - Images



Dot Blot of Rabbit anti-F(ab)₂ Bovine IgG Antibody Texas Red Conjugated. Antigen: Bovine IgG. Load: Lane 1 - 200 ng Lane 2 - 66.7 ng Lane 3 - 22.2 ng Lane 4 - 7.41 ng Lane 5 - 2.47 ng. Primary antibody: n/a. Secondary antibody: Rabbit anti-F(ab)₂ Bovine IgG Antibody Texas Red Conjugated at 1:1,000 for 60 min at RT. Block: MB-070 for 60 min at RT.

F(ab')₂ Anti-Bovine IgG (H&L) (Texas Red™ Conjugated) Secondary Antibody - Background

This product is designed for immunofluorescence microscopy, fluorescence based plate assays (FLISA) and fluorescent western blotting. This product is also suitable for multiplex analysis, including multicolor imaging, utilizing various commercial platforms.