

F(ab')₂ Anti-Rabbit IgG (H&L) (Texas Red™ Conjugated) Pre-Adsorbed Secondary Antibody
Goat Polyclonal, Texas Red®
Catalog # ASR2096

Specification

F(ab')₂ Anti-Rabbit IgG (H&L) (Texas Red™ Conjugated) Pre-Adsorbed Secondary Antibody - Product Information

Description	F(ab')₂ Anti-RABBIT IgG (H&L) (GOAT) Antibody Texas Red™ Conjugated Min X Bv Ch Gt GP Ham Hs Hu Ms Rt & Sh Serum Proteins
Host	Goat
Conjugate	Texas Red®
FP Value	4.8 moles Texas Red® per mole of IgG
Target Species	F(ab')₂
Clonality	Rabbit
Application	Polyclonal
Application Note	IF, FC FLISA 1:10,000-1:50,000;IF Microscopy 1:1,000-1:5,000;FlowCytometry 1:500-1:2,500
Physical State	Lyophilized
Host Isotype	IgG F(ab')₂
Target Isotype	IgG (H&L)
Buffer	0.01 M Sodium Phosphate, 0.15 M Sodium Chloride, pH 7.2
Immunogen	Rabbit IgG whole molecule
Reconstitution Volume	500 µL
Reconstitution Buffer	Restore with deionized water (or equivalent)
Stabilizer	10 mg/mL Bovine Serum Albumin (BSA) - Immunoglobulin and Protease free
Preservative	0.01% (w/v) Sodium Azide

F(ab')₂ Anti-Rabbit IgG (H&L) (Texas Red™ Conjugated) Pre-Adsorbed Secondary Antibody - Additional Information

Shipping Condition

Ambient

Purity

This product was prepared from monospecific antiserum by immunoaffinity chromatography using Rabbit IgG coupled to agarose beads followed by solid phase adsorption(s) to remove any unwanted reactivities, pepsin digestion and chromatographic separation. Assay by immunoelectrophoresis resulted in a single precipitin arc against anti-Goat Serum, Rabbit IgG and Rabbit Serum. No reaction was observed against anti-Pepsin, anti-Goat IgG F(c), or Bovine, Horse, Human, Mouse, Rat and Sheep Serum Proteins.

Storage Condition

Store vial at 4° C prior to restoration. For extended storage aliquot contents and freeze at -20° C or below. Avoid cycles of freezing and thawing. Centrifuge product if not completely clear after standing at room temperature. This product is stable for several weeks at 4° C as an undiluted liquid. Dilute only prior to immediate use.

Precautions Note

This product is for research use only and is not intended for therapeutic or diagnostic applications.

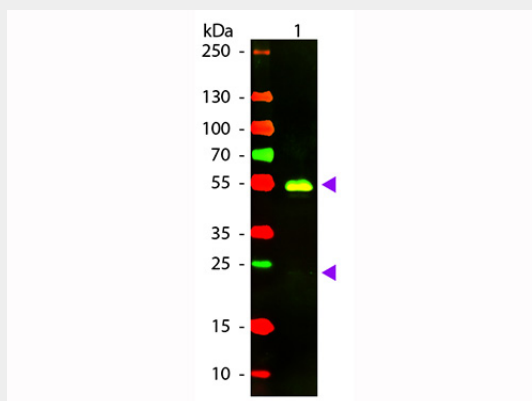
F(ab')₂ Anti-Rabbit IgG (H&L) (Texas Red™ Conjugated) Pre-Adsorbed Secondary Antibody - Protein Information

F(ab')₂ Anti-Rabbit IgG (H&L) (Texas Red™ Conjugated) Pre-Adsorbed Secondary Antibody - Protocols

Provided below are standard protocols that you may find useful for product applications.

- [Western Blot](#)
- [Blocking Peptides](#)
- [Dot Blot](#)
- [Immunohistochemistry](#)
- [Immunofluorescence](#)
- [Immunoprecipitation](#)
- [Flow Cytometry](#)
- [Cell Culture](#)

F(ab')₂ Anti-Rabbit IgG (H&L) (Texas Red™ Conjugated) Pre-Adsorbed Secondary Antibody - Images



Western blot of Texas Red™ conjugated Goat F(ab')₂ Anti-Rabbit IgG (Pre-Adsorbed) secondary antibody. Lane 1: Rabbit IgG. Lane 2: None. Load: 50 ng per lane. Primary antibody: None. Secondary antibody: Texas Red™ goat secondary antibody at 1:1,000 for 60 min at RT. Blocking: MB-070 for 30 min at RT. Predicted/Observed size: 25 & 55 kDa, 25 & 55 kDa for Rabbit IgG. Other band(s): None.

F(ab')₂ Anti-Rabbit IgG (H&L) (Texas Red™ Conjugated) Pre-Adsorbed Secondary Antibody - Background

This product is designed for immunofluorescence microscopy, fluorescence based plate assays (FLISA) and fluorescent western blotting. This product is also suitable for multiplex analysis,

including multicolor imaging, utilizing various commercial platforms.