

Mouse IgG Fab Texas Red™
Catalog # ASR2138**Specification**

Mouse IgG Fab Texas Red™ - Product Information

Description	MOUSE IgG F(ab) fragment Texas Red™ conjugated
Conjugate	Texas Red®
FP Value	2.4 moles Texas Red® per mole of Mouse IgG F(ab)
Physical State	Lyophilized
Host Isotype	IgG F(ab)
Buffer	0.02 M Potassium Phosphate, 0.15 M Sodium Chloride, pH 7.2
Species of Origin	Mouse
Reconstitution Volume	1.0 mL
Reconstitution Buffer	Restore with deionized water (or equivalent)
Stabilizer	10 mg/mL Bovine Serum Albumin (BSA) - Immunoglobulin and Protease free
Preservative	0.01% (w/v) Sodium Azide

Mouse IgG Fab Texas Red™ - Additional Information**Shipping Condition**

Ambient

Purity

This product was prepared from normal serum by delipidation, salt fractionation, ion exchange chromatography followed by papain digestion and extensive dialysis against the buffer stated above. Assay by immunoelectrophoresis resulted in a single precipitin arc against anti-Mouse IgG, anti-Mouse IgG F(ab')₂ and anti-Mouse Serum. No reaction was observed against anti-Mouse IgG F(c) or anti-Papain.

Storage Condition

Store vial at 4° C prior to restoration. For extended storage aliquot contents and freeze at -20° C or below. Avoid cycles of freezing and thawing. Centrifuge product if not completely clear after standing at room temperature. This product is stable for several weeks at 4° C as an undiluted liquid. Dilute only prior to immediate use.

Precautions Note

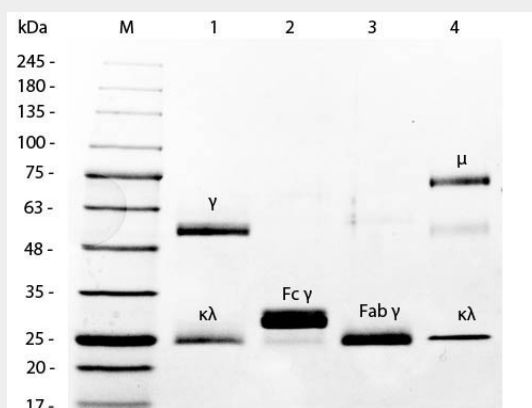
This product is for research use only and is not intended for therapeutic or diagnostic applications.

Mouse IgG Fab Texas Red™ - Protein Information**Mouse IgG Fab Texas Red™ - Protocols**

Provided below are standard protocols that you may find useful for product applications.

- [Western Blot](#)
- [Blocking Peptides](#)
- [Dot Blot](#)
- [Immunohistochemistry](#)
- [Immunofluorescence](#)
- [Immunoprecipitation](#)
- [Flow Cytometry](#)
- [Cell Culture](#)

Mouse IgG Fab Texas Red™ - Images



SDS-PAGE of Mouse IgG F(ab) Fragment Texas Red™ Conjugated . Lane 1: 5 µL Opal Prestained Marker . Lane 2: Reduced Mouse IgG Whole Molecule . Lane 3: Reduced Mouse F(c) Fragment . Lane 4: Reduced Mouse F(ab) Fragment Texas Red™ Conjugated . Lane 5: Mouse IgM Kappa Myeloma Protein . Load: 1 µg per lane. Predicted/Observed size: IgG at 50 and 25 kDa; F(c) at 25 kDa; F(ab) at 25 kDa; IgM K at 70 and 23 kDa. Observed F(c) Fragment migrates slightly higher.

Mouse IgG Fab Texas Red™ - Background

This product is designed for immunofluorescence microscopy, fluorescence based plate assays (FLISA) and fluorescent western blotting. This product is also suitable for multiplex analysis, including multicolor imaging, utilizing various commercial platforms.