

Anti-Goat IgG (H&L) (Alkaline Phosphatase Conjugated) Secondary Antibody
Donkey Polyclonal, Alkaline Phosphatase (Calf Intestine)
Catalog # ASR2158**Specification****Anti-Goat IgG (H&L) (Alkaline Phosphatase Conjugated) Secondary Antibody - Product Information**

Description	Anti-GOAT IgG (H&L) (DONKEY) Antibody Alkaline Phosphatase Conjugated
Host	Donkey
Conjugate	Alkaline Phosphatase (Calf Intestine)
Target Species	Goat
Reactivity	Goat
Clonality	Polyclonal
Application	WB, E, IC
Application Note	ELISA 1:2,000-1:10,000;Western Blot 1:500-1:2,500;Immunocytochemistry 1:200-1:1,000
Physical State	Liquid (sterile filtered)
Host Isotype	IgG
Target Isotype	IgG (H&L)
Buffer	0.05 M Tris Chloride, 0.15M Sodium Chloride, 0.001M Magnesium Chloride, 0.0001M Zinc Chloride, 50% (v/v) Glycerol; pH 8.0
Immunogen	Anti-Goat IgG (h&L) was produced by repeated immunization with goat IgG whole molecule in donkey.
Stabilizer	10 mg/mL Bovine Serum Albumin (BSA) - Immunoglobulin and Protease free
Preservative	0.1% (w/v) Sodium Azide

Anti-Goat IgG (H&L) (Alkaline Phosphatase Conjugated) Secondary Antibody - Additional Information**Shipping Condition**

Wet Ice

Purity

This product was prepared from monospecific antiserum by immunoaffinity chromatography using Goat IgG coupled to agarose beads followed by solid phase adsorption(s) to remove any unwanted reactivities. Assay by immunoelectrophoresis resulted in a single precipitin arc against anti-Alkaline Phosphatase (calf intestine), anti-Donkey Serum, Goat IgG and Goat Serum.

Storage Condition

Store vial at 4° C before opening. DO NOT FREEZE. This product is stable at 4° C as an undiluted liquid. Dilute only prior to immediate use. Freezing alkaline phosphatase conjugates will result in a substantial loss of enzymatic activity.

Precautions Note

This product is for research use only and is not intended for therapeutic or diagnostic applications.

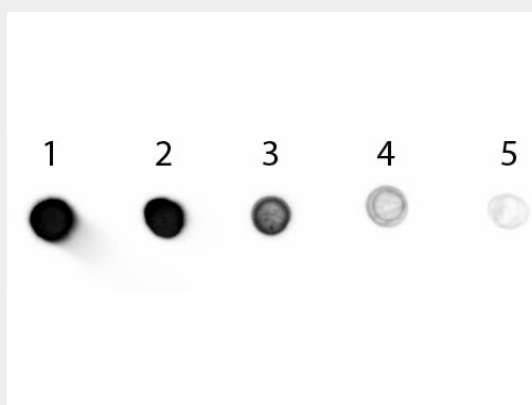
Anti-Goat IgG (H&L) (Alkaline Phosphatase Conjugated) Secondary Antibody - Protein Information

Anti-Goat IgG (H&L) (Alkaline Phosphatase Conjugated) Secondary Antibody - Protocols

Provided below are standard protocols that you may find useful for product applications.

- [Western Blot](#)
- [Blocking Peptides](#)
- [Dot Blot](#)
- [Immunohistochemistry](#)
- [Immunofluorescence](#)
- [Immunoprecipitation](#)
- [Flow Cytometry](#)
- [Cell Culture](#)

Anti-Goat IgG (H&L) (Alkaline Phosphatase Conjugated) Secondary Antibody - Images



Dot Blot of Donkey anti-Goat IgG Antibody Alkaline Phosphatase Conjugated. Antigen: Goat IgG. Load: Lane 1 - 200 ng Lane 2 - 66.7 ng Lane 3 - 22.2 ng Lane 4 - 7.41 ng Lane 5 - 2.47 ng. Primary antibody: n/a. Secondary antibody: Donkey anti-Goat IgG Antibody Alkaline Phosphatase Conjugated at 1:1,000 for 60 min at RT. Block: MB-070 for 1 HR at RT.

Anti-Goat IgG (H&L) (Alkaline Phosphatase Conjugated) Secondary Antibody - Background

Anti-Goat IgG (H&L) antibody generated in donkey detects specifically goat IgG. This secondary antibody anti-Goat is ideal for investigators who routinely perform titration assays, western-blot, immunoprecipitation and more generally immunoassays.