

Anti-Human IgG (H&L) (Alkaline Phosphatase Conjugated) Secondary Antibody
Goat Polyclonal, Alkaline Phosphatase (Calf Intestine)
Catalog # ASR2176**Specification****Anti-Human IgG (H&L) (Alkaline Phosphatase Conjugated) Secondary Antibody - Product Information**

Description	Anti-HUMAN IgG (H&L) (GOAT) Antibody
Host	Alkaline Phosphatase Conjugated
Conjugate	Goat
Target Species	Alkaline Phosphatase (Calf Intestine)
Clonality	Human
Application	Polyclonal
Application Note	WB, E, IC
	ELISA 1:4,500;Western Blot
	1:500-1:2,500;Immunochemistry
	1:200-1:1,000
Physical State	Liquid (sterile filtered)
Host Isotype	IgG
Target Isotype	IgG (H&L)
Buffer	0.05 M Tris Chloride, 0.15M Sodium Chloride, 0.001M Magnesium Chloride, 0.0001M Zinc Chloride, 50% (v/v) Glycerol; pH 8.0
Immunogen	Human IgG whole molecule
Species of Origin	goat
Stabilizer	10 mg/mL Bovine Serum Albumin (BSA) - Immunoglobulin and Protease free
Preservative	0.01% (w/v) Sodium Azide

Anti-Human IgG (H&L) (Alkaline Phosphatase Conjugated) Secondary Antibody - Additional Information**Shipping Condition**

Wet Ice

Purity

Anti-Human IgG (H&L) was prepared from monospecific antiserum by immunoaffinity chromatography using Human IgG coupled to agarose beads. Assay by immunoelectrophoresis resulted in a single precipitin arc against anti-Alkaline Phosphatase (calf intestine), anti-Goat Serum, Human IgG and Human Serum.

Storage Condition

Store vial at 4° C before opening. DO NOT FREEZE. This product is stable at 4° C as an undiluted liquid. Dilute only prior to immediate use. Freezing alkaline phosphatase conjugates will result in a substantial loss of enzymatic activity.

Precautions Note

This product is for research use only and is not intended for therapeutic or diagnostic applications.

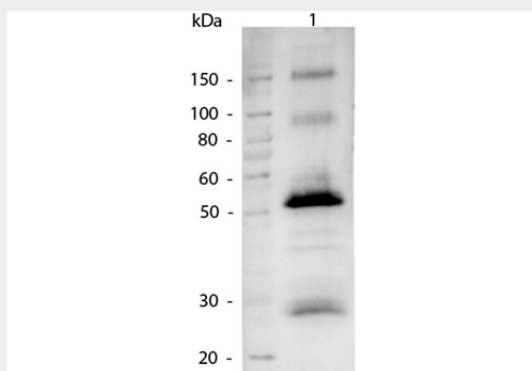
Anti-Human IgG (H&L) (Alkaline Phosphatase Conjugated) Secondary Antibody - Protein Information

Anti-Human IgG (H&L) (Alkaline Phosphatase Conjugated) Secondary Antibody - Protocols

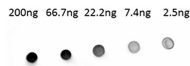
Provided below are standard protocols that you may find useful for product applications.

- [Western Blot](#)
- [Blocking Peptides](#)
- [Dot Blot](#)
- [Immunohistochemistry](#)
- [Immunofluorescence](#)
- [Immunoprecipitation](#)
- [Flow Cytometry](#)
- [Cell Culture](#)

Anti-Human IgG (H&L) (Alkaline Phosphatase Conjugated) Secondary Antibody - Images



Western Blot of Alkaline Phosphatase conjugated Goat anti-Human IgG antibody. Lane 1: Human IgG. Lane 2: none. Load: 50 ng per lane. Primary antibody: none. Secondary antibody: Alkaline Phosphatase Human secondary antibody at 1:1,000 o/n at 4°C. Block: MB-070 for 30 min at RT. Reaction visualized using alkaline phosphatase for 30 seconds at RT. Predicted/Observed size: 50kDa, 25kDa for Human IgG.



Dot Blot of Alkaline Phosphatase conjugated Goat anti-Human IgG antibody. Antigen: Human IgG. Load: Lane 1 - 200ng Lane 2 - 66.7ng Lane 3 - 22.2ng Lane 4 - 7.4ng Lane 5 - 2.5ng. Primary antibody: none. Secondary antibody: Alkaline Phosphatase conjugated Goat anti-Human IgG antibody at 1:1,000 for 60 min at RT. Block: MB-070 for 60 min at RT. Reaction visualized using alkaline phosphatase substrate for 30 seconds at RT.

Anti-Human IgG (H&L) (Alkaline Phosphatase Conjugated) Secondary Antibody - Background

Anti-Human IgG (H&L) detects human Immunoglobulin G (IgG) antibody isotype. It is a protein complex composed of four peptide chains — two identical heavy chains and two identical light chains arranged in a Y-shape typical of antibody monomers. Each IgG has two antigen binding sites. Representing approximately 75% of serum immunoglobulins in humans, IgG is the most abundant antibody isotype found in the circulation.[1] IgG molecules are synthesized and secreted by plasma B cells.