

**Anti-Human IgG (H&L) (Alkaline Phosphatase Conjugated) Secondary Antibody**  
**Sheep Polyclonal, Alkaline Phosphatase (Calf Intestine)**  
**Catalog # ASR2189****Specification****Anti-Human IgG (H&L) (Alkaline Phosphatase Conjugated) Secondary Antibody - Product Information**

Description	<b>Anti-HUMAN IgG (H&amp;L) (SHEEP) Antibody</b>
Host	<b>Alkaline Phosphatase Conjugated</b>
Conjugate	<b>Sheep</b>
Target Species	<b>Alkaline Phosphatase (Calf Intestine)</b>
Reactivity	<b>Human</b>
Clonality	<b>Human</b>
Application	<b>Polyclonal</b>
Application Note	<b>WB, E, IC</b>
	<b>ELISA 1:2,000-1:10,000;Western Blot</b>
	<b>1:500-1:2,500;Immunochemistry</b>
	<b>1:200-1:1,000</b>
Physical State	<b>Liquid (sterile filtered)</b>
Host Isotype	<b>IgG</b>
Target Isotype	<b>IgG (H&amp;L)</b>
Buffer	<b>0.05 M Tris Chloride, 0.15M Sodium Chloride, 0.001M Magnesium Chloride, 0.0001M Zinc Chloride, 50% (v/v) Glycerol; pH 8.0</b>
Immunogen	<b>Human IgG whole molecule</b>
Species of Origin	<b>Human</b>
Stabilizer	<b>10 mg/mL Bovine Serum Albumin (BSA) - Immunoglobulin and Protease free</b>
Preservative	<b>0.1% (w/v) Sodium Azide</b>

**Anti-Human IgG (H&L) (Alkaline Phosphatase Conjugated) Secondary Antibody - Additional Information****Shipping Condition**

Wet Ice

**Purity**

Anti-Human IgG (H&L) (SHEEP) Antibody was prepared from monospecific antiserum by immunoaffinity chromatography using Human IgG coupled to agarose beads followed by solid phase adsorption(s) to remove any unwanted reactivities. Assay by immunoelectrophoresis resulted in a single precipitin arc against anti-Alkaline Phosphatase (calf intestine), anti-Sheep Serum, Human IgG and Human Serum.

**Storage Condition**

Store vial at 4° C before opening. DO NOT FREEZE. This product is stable at 4° C as an undiluted liquid. Dilute only prior to immediate use. Freezing alkaline phosphatase conjugates will result in a substantial loss of enzymatic activity.

**Precautions Note**

This product is for research use only and is not intended for therapeutic or diagnostic applications.

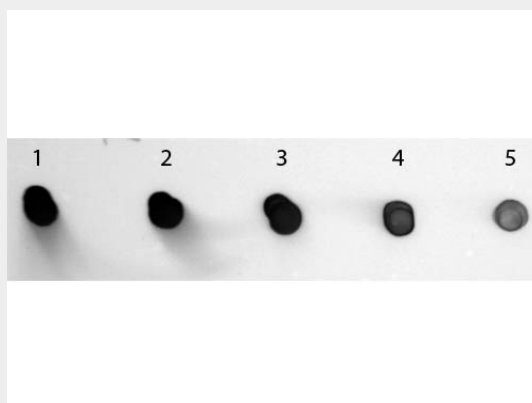
### **Anti-Human IgG (H&L) (Alkaline Phosphatase Conjugated) Secondary Antibody - Protein Information**

### **Anti-Human IgG (H&L) (Alkaline Phosphatase Conjugated) Secondary Antibody - Protocols**

Provided below are standard protocols that you may find useful for product applications.

- [Western Blot](#)
- [Blocking Peptides](#)
- [Dot Blot](#)
- [Immunohistochemistry](#)
- [Immunofluorescence](#)
- [Immunoprecipitation](#)
- [Flow Cytometry](#)
- [Cell Culture](#)

### **Anti-Human IgG (H&L) (Alkaline Phosphatase Conjugated) Secondary Antibody - Images**



Dot Blot of Sheep anti-Human IgG Antibody Alkaline Phosphatase Conjugated. Antigen: Human IgG. Load: Lane 1 - 200 ng Lane 2 - 66.67 ng Lane 3 - 22.22 ng Lane 4 - 7.41 ng Lane 5 - 2.47 ng. Primary antibody: none. Secondary antibody: Sheep anti-Human IgG Antibody Alkaline Phosphatase Conjugated at 1:1,000 for 60 min at RT. Block: MB-070 for 60 min at RT. Visualized using NBT-100 Alkaline Phosphatase Substrate for 30 seconds at RT.

### **Anti-Human IgG (H&L) (Alkaline Phosphatase Conjugated) Secondary Antibody - Background**

Human IgG whole molecule antibody generated in sheep detects specifically human IgG whole molecule. Anti-Human IgG antibody is ideal for investigators involved in serum protein component research.