

**Anti-Mouse IgG (gamma 1, 2a, 2b and 3 chain) Secondary Antibody**  
**Rabbit Polyclonal, Unconjugated**  
**Catalog # ASR2202****Specification****Anti-Mouse IgG (gamma 1, 2a, 2b and 3 chain) Secondary Antibody - Product Information**

Description	<b>Anti-MOUSE IgG (gamma 1, 2a, 2b and 3 chain) (RABBIT) Antibody</b>
Host	<b>Rabbit</b>
Conjugate	<b>Unconjugated</b>
Target Species	<b>Mouse</b>
Clonality	<b>Polyclonal</b>
Application	<b>,1,10,15,</b>
Application Note	<b>ELISA 1:20,000-1:100,000;Western Blot 1:2,000-1:10,000;Immunocytochemistry 1:1,000-1:5,000</b>
Physical State	<b>Liquid (sterile filtered)</b>
Host Isotype	<b>IgG</b>
Target Isotype	<b>IgG (gamma 1, 2a, 2b and 3 chain)</b>
Buffer	<b>0.02 M Potassium Phosphate, 0.15 M Sodium Chloride, pH 7.2</b>
Immunogen	<b>highly purified mouse IgG gamma 1, gamma 2a, gamma 2b and gamma 3 proteins</b>
Stabilizer	<b>None</b>
Preservative	<b>0.01% (w/v) Sodium Azide</b>

**Anti-Mouse IgG (gamma 1, 2a, 2b and 3 chain) Secondary Antibody - Additional Information****Shipping Condition**

Wet Ice

**Purity**

Anti-Mouse IgG subclass pan reactive Secondary Antibody was prepared from monospecific antiserum by immunoaffinity chromatography using antigens coupled to agarose beads followed by solid phase adsorption(s) to remove any unwanted reactivities. This product shows balanced reactivity to Mouse IgG1, IgG2a, IgG2b and IgG3 proteins and is suitable to screen IgG class hybridoma clones. Minimal cross reactivity is observed against other Mouse immunoglobulin classes or light chain proteins.

**Storage Condition**

Store vial at 4° C prior to opening. This product is stable for several weeks at 4° C as an undiluted liquid. Dilute only prior to immediate use. For extended storage aliquot contents and freeze at -20° C or below. Avoid cycles of freezing and thawing.

**Precautions Note**

This product is for research use only and is not intended for therapeutic or diagnostic applications.

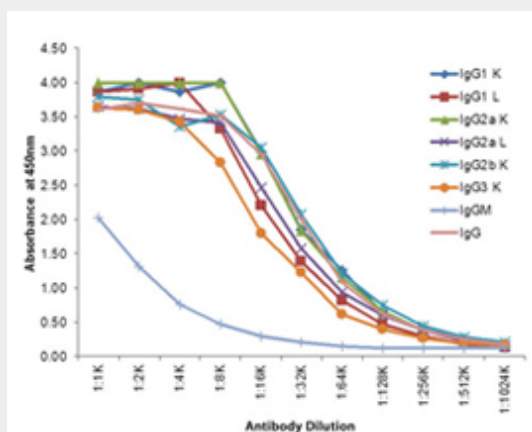
## Anti-Mouse IgG (gamma 1, 2a, 2b and 3 chain) Secondary Antibody - Protein Information

## Anti-Mouse IgG (gamma 1, 2a, 2b and 3 chain) Secondary Antibody - Protocols

Provided below are standard protocols that you may find useful for product applications.

- [Western Blot](#)
- [Blocking Peptides](#)
- [Dot Blot](#)
- [Immunohistochemistry](#)
- [Immunofluorescence](#)
- [Immunoprecipitation](#)
- [Flow Cytometry](#)
- [Cell Culture](#)

## Anti-Mouse IgG (gamma 1, 2a, 2b and 3 chain) Secondary Antibody - Images



Indirect ELISA of Rabbit Anti-Mouse IgG (gamma 1, 2a, 2b, and 3) antibody. Antigen: purified mouse IgG heavy and light chains. Coating amount: 0.1 µg per well. Primary antibody: Rabbit Anti-Mouse IgG (Gamma 1, 2a, 2b, and 3) HRP conjugated Antibody. Dilution series: 2-fold. Substrate: TMB .

## Anti-Mouse IgG (gamma 1, 2a, 2b and 3 chain) Secondary Antibody - Background

Anti-Mouse IgG subclass pan reactive Secondary Antibody is designed for ELISA, Immunohistochemistry, western blotting as well as other anti-IgG antibody based assays.