

Anti-RABBIT IgG (H&L) (Alkaline Phosphatase Conjugated) Secondary Antibody
Goat Polyclonal, Alkaline Phosphatase (Calf Intestine)
Catalog # ASR2214**Specification****Anti-RABBIT IgG (H&L) (Alkaline Phosphatase Conjugated) Secondary Antibody - Product Information**

Description	Anti-RABBIT IgG (H&L) (GOAT) Antibody Alkaline Phosphatase Conjugated
Host	Goat
Conjugate	Alkaline Phosphatase (Calf Intestine)
Target Species	Rabbit
Reactivity	Rabbit
Clonality	Polyclonal
Application	WB, E, IC
Application Note	ELISA 1:30,000;Western Blot 1:1,000-1:4,000;Immunochemistry 1:200-1:1,000
Physical State	Liquid (sterile filtered)
Host Isotype	IgG
Target Isotype	IgG (H&L)
Buffer	0.05 M Tris Chloride, 0.15M Sodium Chloride, 0.001M Magnesium Chloride, 0.0001M Zinc Chloride, 50% (v/v) Glycerol; pH 8.0
Immunogen	Anti-Rabbit IgG (H&L) was produced by repeated immunization with rabbit whole IgG molecule in goat.
Stabilizer	10 mg/mL Bovine Serum Albumin (BSA) - Immunoglobulin and Protease free
Preservative	0.1% (w/v) Sodium Azide

Anti-RABBIT IgG (H&L) (Alkaline Phosphatase Conjugated) Secondary Antibody - Additional Information**Shipping Condition**

Wet Ice

Purity

RABBIT IgG (H&L) Antibody Alkaline Phosphatase conjugated was prepared from monospecific antiserum by immunoaffinity chromatography using Rabbit IgG coupled to agarose beads followed by solid phase adsorption(s) to remove any unwanted reactivities. Assay by immunoelectrophoresis resulted in a single precipitin arc against anti-Alkaline Phosphatase (calf intestine), anti-Goat Serum, Rabbit IgG and Rabbit Serum.

Storage Condition

Store vial at 4° C before opening. DO NOT FREEZE. This product is stable at 4° C as an undiluted liquid. Dilute only prior to immediate use. Freezing alkaline phosphatase conjugates will result in a substantial loss of enzymatic activity.

Precautions Note

This product is for research use only and is not intended for therapeutic or diagnostic applications.

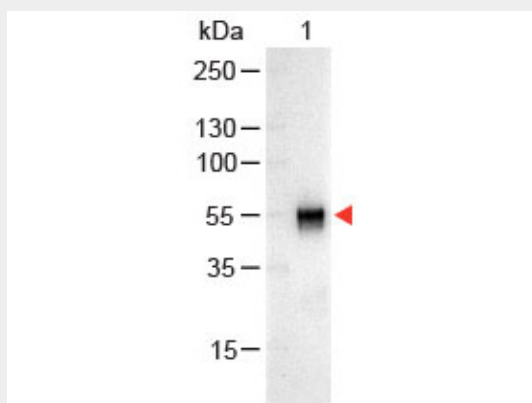
Anti-RABBIT IgG (H&L) (Alkaline Phosphatase Conjugated) Secondary Antibody - Protein Information

Anti-RABBIT IgG (H&L) (Alkaline Phosphatase Conjugated) Secondary Antibody - Protocols

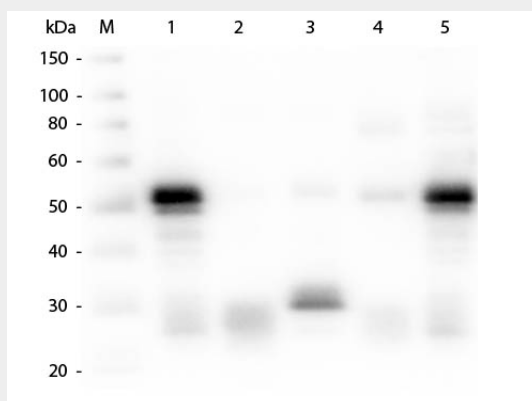
Provided below are standard protocols that you may find useful for product applications.

- [Western Blot](#)
- [Blocking Peptides](#)
- [Dot Blot](#)
- [Immunohistochemistry](#)
- [Immunofluorescence](#)
- [Immunoprecipitation](#)
- [Flow Cytometry](#)
- [Cell Culture](#)

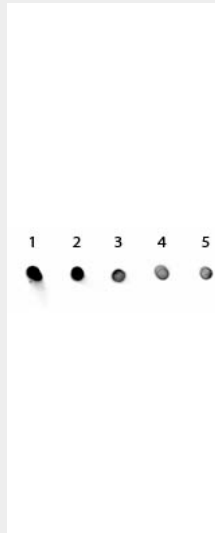
Anti-RABBIT IgG (H&L) (Alkaline Phosphatase Conjugated) Secondary Antibody - Images



Western Blot of Goat anti-Rabbit IgG Antibody Alkaline Phosphatase Conjugated. Lane 1: Rabbit IgG. Lane 2: None. Load: 100 ng per lane. Primary Antibody: None. Secondary antibody: Alkaline Phosphatase goat secondary antibody at 1:1,000 for 60 min at RT. Block: MB-070 for 30 min at RT. Predicted/Observed size: 55 and 28 kDa, 55 kDa for Rabbit IgG. Other Band(s): None.



Western Blot of Anti-Rabbit IgG (H&L) (GOAT) Antibody . Lane M: 3 μ l Molecular Ladder. Lane 1: Rabbit IgG whole molecule . Lane 2: Rabbit IgG F(ab) Fragment . Lane 3: Rabbit IgG F(c) Fragment . Lane 4: Rabbit IgM Whole Molecule . Lane 5: Normal Rabbit Serum . All samples were reduced. Load: 50 ng per lane. Block: MB-070 for 30 min at RT. Primary Antibody: Anti-Rabbit IgG (H&L) (GOAT) Antibody 1:1,000 for 60 min at RT. Secondary antibody: Anti-Goat IgG (DONKEY) Peroxidase Conjugated Antibody 1:40,000 in MB-070 for 30 min at RT. Predicted/Observed Size: 25 and 50 kDa for Rabbit IgG and Serum, 25 kDa for F(c) and F(ab), 70 and 23 kDa for IgM. Rabbit F(c) migrates slightly higher.



Dot Blot of Rabbit IgG Antibody Alkaline Phosphatase Conjugated. Antigen: Rabbit IgG. Load: Lane 1 - 200ng Lane 2 - 66.7ng Lane 3 - 22.2ng Lane 4 - 7.4ng Lane 5 - 2.5ng. Primary antibody: none. Secondary antibody: Rabbit IgG Antibody Alkaline Phosphatase Conjugated at 1:1,000 for 60 min at RT. Block: MB-070 for 60 min at RT. Reaction visualized using alkaline phosphatase substrate for 30 seconds at RT.

Anti-RABBIT IgG (H&L) (Alkaline Phosphatase Conjugated) Secondary Antibody - Background

Anti-Rabbit IgG alkaline phosphatase conjugated antibody generated in goat detects specifically rabbit IgG. This secondary alkaline phosphatase conjugated antibody anti-Rabbit is ideal for investigators who routinely perform titration assays, western-blot, immunoprecipitation and more generally immunoassays.