

Anti-Rabbit IgG F(c) (Texas Red Conjugated) Secondary Antibody
Donkey Polyclonal, Texas Red®
Catalog # ASR2221**Specification****Anti-Rabbit IgG F(c) (Texas Red Conjugated) Secondary Antibody - Product Information**

Description	Anti-RABBIT IgG F(c) (DONKEY) Antibody
Host	Texas Red Conjugated
Conjugate	Donkey
FP Value	Texas Red®
Target Species	6.0 moles Texas Red® per mole of IgG
Clonality	Rabbit
Application	Polyclonal
Application Note	IF
Physical State	IF Microscopy 1:500-1:2,500
Host Isotype	Lyophilized
Target Isotype	IgG
Buffer	IgG F(c)
	0.02 M Potassium Phosphate, 0.15 M
	Sodium Chloride, pH 7.2
Immunogen	Rabbit IgG F(c) fragment
Reconstitution Volume	1.0 mL
Reconstitution Buffer	Restore with deionized water (or
	equivalent)
Stabilizer	10 mg/mL Bovine Serum Albumin (BSA) -
	Immunoglobulin and Protease free
Preservative	0.01% (w/v) Sodium Azide

Anti-Rabbit IgG F(c) (Texas Red Conjugated) Secondary Antibody - Additional Information**Shipping Condition**

Ambient

Purity

This product was prepared from monospecific antiserum by immunoaffinity chromatography using Rabbit IgG coupled to agarose beads followed by solid phase adsorption(s) to remove any unwanted reactivities. Assay by immunoelectrophoresis resulted in a single precipitin arc against anti-Donkey Serum, Rabbit IgG, Rabbit IgG F(c) and Rabbit Serum. No reaction was observed against Rabbit IgG F(ab')₂.

Storage Condition

Store vial at 4° C prior to restoration. For extended storage aliquot contents and freeze at -20° C or below. Avoid cycles of freezing and thawing. Centrifuge product if not completely clear after standing at room temperature. This product is stable for several weeks at 4° C as an undiluted liquid. Dilute only prior to immediate use.

Precautions Note

This product is for research use only and is not intended for therapeutic or diagnostic applications.

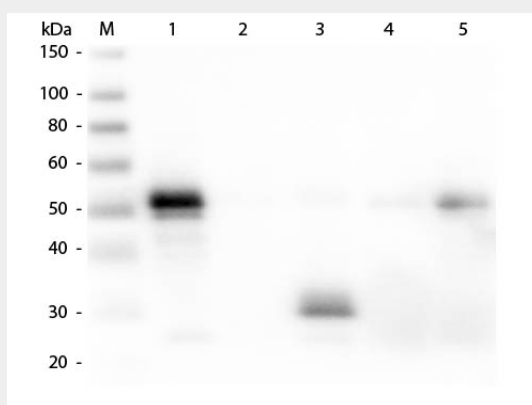
Anti-Rabbit IgG F(c) (Texas Red Conjugated) Secondary Antibody - Protein Information

Anti-Rabbit IgG F(c) (Texas Red Conjugated) Secondary Antibody - Protocols

Provided below are standard protocols that you may find useful for product applications.

- [Western Blot](#)
- [Blocking Peptides](#)
- [Dot Blot](#)
- [Immunohistochemistry](#)
- [Immunofluorescence](#)
- [Immunoprecipitation](#)
- [Flow Cytometry](#)
- [Cell Culture](#)

Anti-Rabbit IgG F(c) (Texas Red Conjugated) Secondary Antibody - Images



Western Blot of Anti-Rabbit IgG F(c) (DONKEY) Antibody . Lane M: 3 μ l Molecular Ladder. Lane 1: Rabbit IgG whole molecule . Lane 2: Rabbit IgG F(ab) Fragment . Lane 3: Rabbit IgG F(c) Fragment . Lane 4: Rabbit IgM Whole Molecule . Lane 5: Normal Rabbit Serum . All samples were reduced. Load: 50 ng per lane. Block: MB-070 for 30 min at RT. Primary Antibody: Anti-Rabbit IgG F(c) (DONKEY) Antibody 1:5,000 for 60 min at RT. Secondary antibody: Anti-Donkey IgG (GOAT) Peroxidase Conjugated Antibody 1:40,000 in MB-070 for 30 min at RT. Predicted/Observed Size: 25 and 50 kDa for Rabbit IgG and Serum, 25 kDa for F(c) and F(ab), 70 and 23 kDa for IgM. Rabbit F(c) migrates slightly higher.

Anti-Rabbit IgG F(c) (Texas Red Conjugated) Secondary Antibody - Background

This product is designed for immunofluorescence microscopy, fluorescence based plate assays (FLISA) and fluorescent western blotting. This product is also suitable for multiplex analysis, including multicolor imaging, utilizing various commercial platforms.