

Anti-Rat IgG (H&L) (Biotin Conjugated) Secondary Antibody
Chicken Polyclonal, Biotin
Catalog # ASR2231**Specification****Anti-Rat IgG (H&L) (Biotin Conjugated) Secondary Antibody - Product Information**

Description	Anti-RAT IgG (H&L) (CHICKEN) Antibody
Host	Biotin Conjugated
Conjugate	Chicken
Target Species	Biotin
Clonality	Rat
Application	Polyclonal
Application Note	WB, E, IC
	ELISA 1:20,000-1:100,000;Western Blot
	1:2,000-1:10,000;Immunochemistry
	1:1,000-1:5,000
Physical State	Lyophilized
Host Isotype	IgG
Target Isotype	IgG (H&L)
Buffer	0.02 M Potassium Phosphate, 0.15 M
	Sodium Chloride, pH 7.2
Immunogen	Rat IgG whole molecule
Reconstitution Volume	1.0 mL
Reconstitution Buffer	Restore with deionized water (or
	equivalent)
Stabilizer	10 mg/mL Bovine Serum Albumin (BSA) -
	Immunoglobulin and Protease free
Preservative	0.01% (w/v) Sodium Azide

Anti-Rat IgG (H&L) (Biotin Conjugated) Secondary Antibody - Additional Information**Shipping Condition**

Ambient

Purity

This product was prepared from monospecific antiserum by immunoaffinity chromatography using Rat IgG coupled to agarose. Assay by immunoelectrophoresis resulted in a single precipitin arc against anti-biotin, anti-Chicken Serum, Rat IgG and Rat Serum.

Storage Condition

Store vial at 4° C prior to restoration. For extended storage aliquot contents and freeze at -20° C or below. Avoid cycles of freezing and thawing. Centrifuge product if not completely clear after standing at room temperature. This product is stable for several weeks at 4° C as an undiluted liquid. Dilute only prior to immediate use.

Precautions Note

This product is for research use only and is not intended for therapeutic or diagnostic applications.

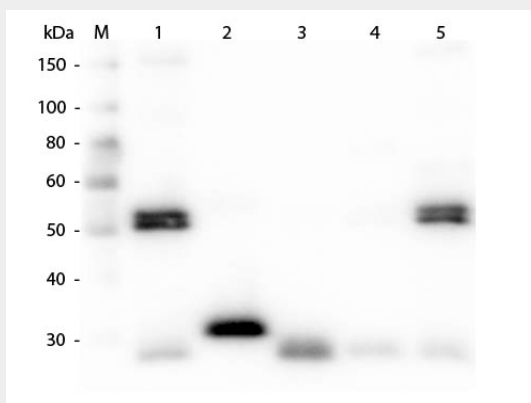
Anti-Rat IgG (H&L) (Biotin Conjugated) Secondary Antibody - Protein Information

Anti-Rat IgG (H&L) (Biotin Conjugated) Secondary Antibody - Protocols

Provided below are standard protocols that you may find useful for product applications.

- [Western Blot](#)
- [Blocking Peptides](#)
- [Dot Blot](#)
- [Immunohistochemistry](#)
- [Immunofluorescence](#)
- [Immunoprecipitation](#)
- [Flow Cytometry](#)
- [Cell Culture](#)

Anti-Rat IgG (H&L) (Biotin Conjugated) Secondary Antibody - Images



Western Blot of Anti-Rat IgG (H&L) (CHICKEN) Antibody . Lane M: 3 μ l Molecular Ladder. Lane 1: Rat IgG whole molecule . Lane 2: Rat IgG F(c) Fragment . Lane 3: Rat IgG F(ab) Fragment . Lane 4: Rat IgM Whole Molecule . Lane 5: Rat Serum . All samples were reduced. Load: 50 ng per lane. Block: MB-070 for 30 min at RT. Primary Antibody: Anti-Rat IgG (H&L) (CHICKEN) Antibody 1:1,000 for 60 min at RT. Secondary Antibody: Anti-Chicken IgG (GOAT) Peroxidase Conjugated Antibody 1:40,000 in MB-070 for 30 min at RT. Predicted/Observed Size: 25 and 55 kDa for Rat IgG and Serum, 25 kDa for F(c) and F(ab), 78 and 25 kDa for IgM. Rat F(c) migrates slightly higher.