

Chicken IgG Alkaline Phosphatase
Catalog # ASR2260**Specification**

Chicken IgG Alkaline Phosphatase - Product Information

Description	CHICKEN IgG whole molecule Alkaline Phosphatase conjugated
Conjugate	Alkaline Phosphatase (Calf Intestine)
Application	,1,2,10,
Application Note	ELISA 1:2,000-1:10,000;Western Blot 1:500-1:2,500;Immunohistochemistry 1:200-1:1,000
Physical State	Liquid (sterile filtered)
Host Isotype	IgG
Buffer	0.05 M Tris Chloride, 0.15M Sodium Chloride, 0.001M Magnesium Chloride, 0.0001M Zinc Chloride, 50% (v/v) Glycerol; pH 8.0
Species of Origin	Chicken

Chicken IgG Alkaline Phosphatase - Additional Information**Shipping Condition**

Wet Ice

Purity

This product was prepared from normal serum by delipidation, salt fractionation, ion exchange chromatography followed by conjugation and extensive dialysis against the buffer stated above. Assay by immunoelectrophoresis resulted in a single precipitin arc against anti-Chicken IgG, anti-Chicken Serum and anti-Alkaline Phosphatase (calf intestine).

Storage Condition

Store vial at 4° C before opening. DO NOT FREEZE. This product is stable at 4° C as an undiluted liquid. Dilute only prior to immediate use. Freezing alkaline phosphatase conjugates will result in a substantial loss of enzymatic activity.

Precautions Note

This product is for research use only and is not intended for therapeutic or diagnostic applications.

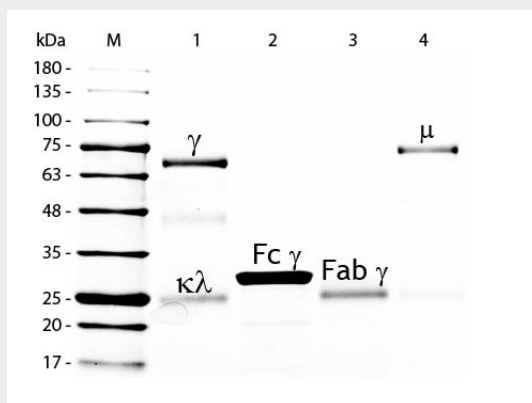
Chicken IgG Alkaline Phosphatase - Protein Information**Chicken IgG Alkaline Phosphatase - Protocols**

Provided below are standard protocols that you may find useful for product applications.

- [Western Blot](#)

- [Blocking Peptides](#)
- [Dot Blot](#)
- [Immunohistochemistry](#)
- [Immunofluorescence](#)
- [Immunoprecipitation](#)
- [Flow Cytometry](#)
- [Cell Culture](#)

Chicken IgG Alkaline Phosphatase - Images



SDS-PAGE of Chicken IgG Whole Molecule Alkaline Phosphatase Conjugated . Lane M: 5 μ L Opal Prestained Marker . Lane 1: Reduced Chicken IgG Whole Molecule Alkaline Phosphatase Conjugated . Lane 2: Reduced Chicken IgG F(c) Fragment . Lane 3: Reduced Chicken IgG F(ab) Fragment . Lane 4: Reduced Chicken IgM Whole Molecule . Load: 1 μ g per lane. Predicted/Observed size: IgG at 72 and 25 kDa; F(c) at 25 kDa; F(ab) at 25 kDa; IgM at 75 kDa. Observed F(c) Fragment migrates slightly higher. Other bands: Chicken IgG heavy chain alternative splicing variant at approximately 40 kDa in Lane 1.

Chicken IgG Alkaline Phosphatase - Background

Anti-Chicken IgG Antibody detects specifically Chicken IgG whole molecule. Anti-Chicken IgG is ideal for investigators who routinely perform ELISA, Sandwich ELISA, titration assays, western-blot, immunoprecipitation and more generally immunoassays. Anti-Chicken IgG Antibody is ideal for investigators in Cancer, Immunology, and Microbiology research.