

Mouse IgG Fab fragment
Catalog # ASR2305**Specification****Mouse IgG Fab fragment - Product Information**

Description	MOUSE IgG F(ab) fragment
Conjugate	Unconjugated
Physical State	Liquid (sterile filtered)
Host Isotype	IgG F(ab)
Buffer	0.02 M Potassium Phosphate, 0.15 M Sodium Chloride, pH 7.2
Species of Origin	Mouse
Stabilizer	None
Preservative	0.01% (w/v) Sodium Azide

Mouse IgG Fab fragment - Additional Information**Shipping Condition**

Wet Ice

Purity

Mouse IgG F(ab) fragment was prepared from normal serum by a multi-step process which includes delipidation, salt fractionation and ion exchange chromatography followed by papain digestion and extensive dialysis against the buffer stated above. Mouse IgG F(ab) fragment assayed by immunoelectrophoresis resulted in a single precipitin arc against anti-Mouse IgG, anti-Mouse IgG F(ab')₂ and anti-Mouse Serum. No reaction was observed against anti-Mouse IgG F(c) or anti- Papain.

Storage Condition

Store vial at 4° C prior to opening. This product is stable for several weeks at 4° C as an undiluted liquid. Dilute only prior to immediate use. For extended storage, aliquot contents and freeze at -20° C or below. Avoid cycles of freezing and thawing.

Precautions Note

This product is for research use only and is not intended for therapeutic or diagnostic applications.

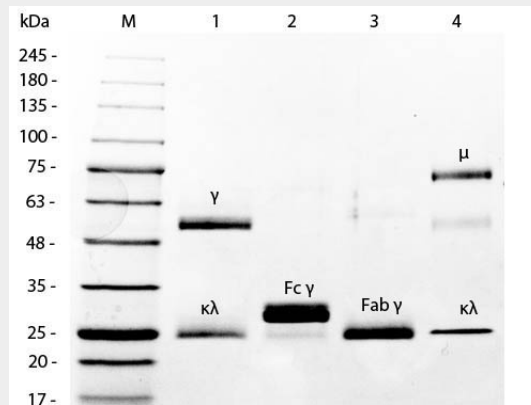
Mouse IgG Fab fragment - Protein Information**Mouse IgG Fab fragment - Protocols**

Provided below are standard protocols that you may find useful for product applications.

- [Western Blot](#)
- [Blocking Peptides](#)
- [Dot Blot](#)
- [Immunohistochemistry](#)

- [Immunofluorescence](#)
- [Immunoprecipitation](#)
- [Flow Cytometry](#)
- [Cell Culture](#)

Mouse IgG Fab fragment - Images



SDS-PAGE of Mouse IgG F(ab) Fragment . Lane 1: 5 μ L Opal Prestained Marker . Lane 2: Reduced Mouse IgG Whole Molecule . Lane 3: Reduced Mouse F(c) Fragment . Lane 4: Reduced Mouse F(ab) Fragment . Lane 5: Mouse IgM Kappa Myeloma Protein . Load: 1 μ g per lane. Predicted/Observed size: IgG at 50 and 25 kDa; F(c) at 25 kDa; F(ab) at 25 kDa; IgM K at 70 and 23 kDa. Observed F(c) Fragment migrates slightly higher.

Mouse IgG Fab fragment - Background

Secreted as part of the adaptive immune response by plasma B cells, immunoglobulin G constitutes 75% of serum immunoglobulins. Immunoglobulin G binds to viruses, bacteria, as well as fungi and facilitates their destruction or neutralization via agglutination (and thereby immobilizing them), activation of the complement cascade, and opsonization for phagocytosis. The F(ab) fragment is the portion of the antibody that binds to the antigen target. The immunoglobulin F(ab) also possesses one constant and one variable region of both the heavy and light chain. Mouse IgG F(ab) Fragment is ideal for investigators in Immunology, Cancer, and Microbiology research.