

**Anti-Human IgG F(c) Secondary Antibody**  
**Mouse Monoclonal 3D8.H7.D4 IgG1 kappa , Unconjugated**  
**Catalog # ASR2310****Specification**

---

**Anti-Human IgG F(c) Secondary Antibody - Product Information**

Description	<b>Anti-HUMAN IgG F(c) (MOUSE) Antibody</b>
Host	<b>Mouse</b>
Conjugate	<b>Unconjugated</b>
Target Species	<b>Human</b>
Reactivity	<b>Human</b>
Clonality	<b>Monoclonal</b>
Application	<b>,1,10,</b>
Application Note	<b>ELISA 1-:1000-1:10000;Western Blot 1:1000-1:2000</b>
Physical State	<b>Liquid (sterile filtered)</b>
Host Isotype	<b>IgG1</b>
Target Isotype	<b>IgG F(c)</b>
Buffer	<b>0.02 M Potassium Phosphate, 0.15 M Sodium Chloride, pH 7.2</b>
Immunogen	<b>Anti-Human IgG F(c) monoclonal antibody was produced by repeated immunization with Human IgG F(c) fragment in mice.</b>
Stabilizer	<b>None</b>
Preservative	<b>0.01% (w/v) Sodium Azide</b>

**Anti-Human IgG F(c) Secondary Antibody - Additional Information****Shipping Condition**

Dry Ice

**Purity**

Anti-Human IgG F(c) Antibody was prepared from concentrated roller bottle supernatant by Protein A chromatography sepharose beads. Assay by immunoelectrophoresis resulted in a single precipitin arc against anti-Mouse Serum, Human IgG, Human Serum and Human F(c). No reaction was observed against Human F(ab'<sup>2</sup>).

**Storage Condition**

Store vial at -20° C prior to opening. Aliquot contents and freeze at -20° C or below for extended storage. Avoid cycles of freezing and thawing. Centrifuge product if not completely clear after standing at room temperature. This product is stable for several weeks at 4° C as an undiluted liquid. Dilute only prior to immediate use.

**Precautions Note**

This product is for research use only and is not intended for therapeutic or diagnostic applications.

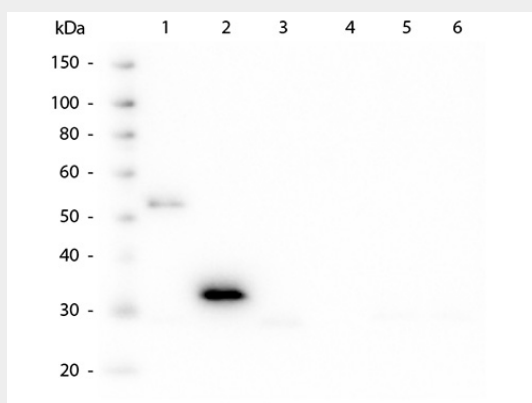
**Anti-Human IgG F(c) Secondary Antibody - Protein Information**

## Anti-Human IgG F(c) Secondary Antibody - Protocols

Provided below are standard protocols that you may find useful for product applications.

- [Western Blot](#)
- [Blocking Peptides](#)
- [Dot Blot](#)
- [Immunohistochemistry](#)
- [Immunofluorescence](#)
- [Immunoprecipitation](#)
- [Flow Cytometry](#)
- [Cell Culture](#)

## Anti-Human IgG F(c) Secondary Antibody - Images



Western Blot of Mouse anti-Human Fc antibody. Lane 1: Human IgG. Lane 2: Human Fc. Lane 3: Human F(ab). Lane 4: Human F(ab)<sub>2</sub>. Lane 5: Human IgM. Lane 6: Human IgM Fc5  $\mu$ . Load: 50 ng per lane. Primary antibody: Human Fc monoclonal antibody at 1:1000 for overnight at 4°C. Secondary antibody: HRP mouse secondary antibody at 1:40,000 for 30 min at RT. Block: MB-070 for 30 min at RT. Predicted/Observed size: 28 kDa, 28 kDa for Human Fc.

## Anti-Human IgG F(c) Secondary Antibody - Background

Human IgG F(c) fragment antibody generated in mice detects specifically human IgG. Human IgG (Fc) is a proteolytic fragment of immunoglobulin G (IgG) obtained by limited digestion with the enzyme pepsin under controlled conditions of temperature, time and pH. Receptors bind the Fc portion of Human IgG and often this fragment is removed from immunoglobulins to minimize receptor binding and lower background reactivity. This anti-human IgG secondary antibody is ideal for investigators who routinely perform titration assays, western-blot, immunoprecipitation and more generally immunoassays.