

Anti-Human IgM (Fc5 μ) Secondary Antibody
Mouse Monoclonal 22G1.H8 IgG2b kappa , Unconjugated
Catalog # ASR2311**Specification**

Anti-Human IgM (Fc5 μ) Secondary Antibody - Product Information

Description	Anti-HUMAN IgM (Fc5 μ) (MOUSE) Antibody
Host	Mouse
Conjugate	Unconjugated
Target Species	Human
Reactivity	Human
Clonality	Monoclonal
Application	WB, E
Application Note	ELISA 1:1000-1:10000;Western Blot 1:1000-1:2000
Physical State	Liquid (sterile filtered)
Host Isotype	IgG2b
Target Isotype	IgM Fc5 μ
Buffer	0.02 M Potassium Phosphate, 0.15 M Sodium Chloride, pH 7.2
Immunogen	Anti-Human IgM Fc5 μ was produced by repeated immunization with Human IgM Fc5 μ fragment in mice.
Stabilizer	None
Preservative	0.01% (w/v) Sodium Azide

Anti-Human IgM (Fc5 μ) Secondary Antibody - Additional Information**Shipping Condition**

Dry Ice

Purity

Anti-Human IgM Fc5 μ Antibody was prepared from concentrated roller bottle supernatant by Protein A chromatography sepharose beads. Assay by immunoelectrophoresis resulted in a single precipitin arc against anti-Mouse Serum, Human IgM, Human Serum and Human Fc5 μ . No reaction was observed against Human IgG, Human IgA, Human Fc, Human F(ab) or Human F(ab)2.

Storage Condition

Store vial at -20° C prior to opening. Aliquot contents and freeze at -20° C or below for extended storage. Avoid cycles of freezing and thawing. Centrifuge product if not completely clear after standing at room temperature. This product is stable for several weeks at 4° C as an undiluted liquid. Dilute only prior to immediate use.

Precautions Note

This product is for research use only and is not intended for therapeutic or diagnostic applications.

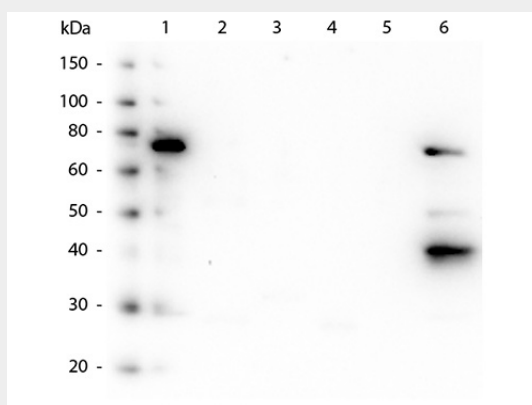
Anti-Human IgM (Fc5 μ) Secondary Antibody - Protein Information

Anti-Human IgM (Fc5 μ) Secondary Antibody - Protocols

Provided below are standard protocols that you may find useful for product applications.

- [Western Blot](#)
- [Blocking Peptides](#)
- [Dot Blot](#)
- [Immunohistochemistry](#)
- [Immunofluorescence](#)
- [Immunoprecipitation](#)
- [Flow Cytometry](#)
- [Cell Culture](#)

Anti-Human IgM (Fc5 μ) Secondary Antibody - Images



Western Blot of Mouse anti-Human IgM Fc5 μ antibody. Lane 1: Human IgM. Lane 2: Human IgG. Lane 3: Human Fc. Lane 4: Human F(ab). Lane 5: Human F(ab)₂. Lane 6: Human IgM Fc5 μ . Load: 50 ng per lane. Primary antibody: Human IgM Fc5 μ monoclonal antibody at 1:1000 for overnight at 4 degrees C. Secondary antibody: Peroxidase mouse secondary antibody at 1:40,000 for 30 min at RT. Block: MB-070 for 30 min at RT. Predicated/Observed size: 78 kDa, 78 kDa for Human IgM.

Anti-Human IgM (Fc5 μ) Secondary Antibody - Background

Human IgM Fc5 μ antibody generated in mice detects specifically human IgM. This anti-human IgM secondary antibody is ideal for investigators who routinely perform titration assays, western-blot, immunoprecipitation and more generally immunoassays.