

**Anti-Human IgG F(c) Secondary Antibody**  
**Rabbit Polyclonal, Unconjugated**  
**Catalog # ASR2342****Specification****Anti-Human IgG F(c) Secondary Antibody - Product Information**

Description	<b>Anti-HUMAN IgG F(c) (RABBIT) Antibody</b>
Host	<b>Rabbit</b>
Conjugate	<b>Unconjugated</b>
Target Species	<b>Human</b>
Reactivity	<b>Human</b>
Clonality	<b>Polyclonal</b>
Application	<b>WB, E, IC</b>
Application Note	<b>ELISA 1:375,000;Western Blot 1:3,000-1:30,000;Immunochemistry 1:1,000-1:6,000</b>
Physical State	<b>Liquid (sterile filtered)</b>
Host Isotype	<b>IgG</b>
Target Isotype	<b>IgG F(c)</b>
Buffer	<b>0.02 M Potassium Phosphate, 0.15 M Sodium Chloride, pH 7.2</b>
Immunogen	<b>Anti-Human IgG F(c) fragment was produced by repeated immunization with Human IgG F(c) fragment in rabbit.</b>
Stabilizer	<b>None</b>
Preservative	<b>0.01% (w/v) Sodium Azide</b>

**Anti-Human IgG F(c) Secondary Antibody - Additional Information****Shipping Condition**

Wet Ice

**Purity**

This product was prepared from monospecific antiserum by immunoaffinity chromatography using Human IgG coupled to agarose beads followed by solid phase adsorption(s) to remove any unwanted reactivities. Assay by immunoelectrophoresis resulted in a single precipitin arc against anti-Rabbit Serum, Human IgG, Human IgG F(c) and Human Serum. No reaction was observed against Human IgG F(ab')<sub>2</sub>.

**Storage Condition**

Store vial at 4° C prior to opening. This product is stable for several weeks at 4° C as an undiluted liquid. Dilute only prior to immediate use. For extended storage aliquot contents and freeze at -20° C or below. Avoid cycles of freezing and thawing.

**Precautions Note**

This product is for research use only and is not intended for therapeutic or diagnostic applications.

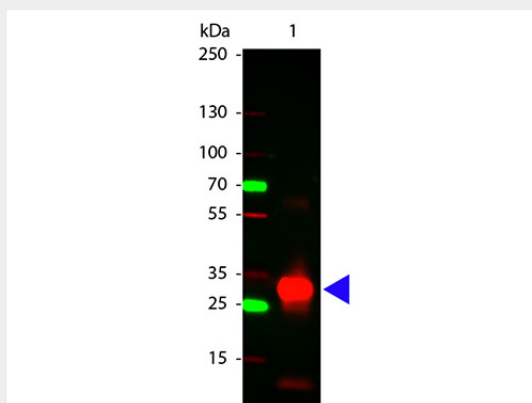
**Anti-Human IgG F(c) Secondary Antibody - Protein Information**

## Anti-Human IgG F(c) Secondary Antibody - Protocols

Provided below are standard protocols that you may find useful for product applications.

- [Western Blot](#)
- [Blocking Peptides](#)
- [Dot Blot](#)
- [Immunohistochemistry](#)
- [Immunofluorescence](#)
- [Immunoprecipitation](#)
- [Flow Cytometry](#)
- [Cell Culture](#)

## Anti-Human IgG F(c) Secondary Antibody - Images



Western Blot of Rabbit anti-Human Fc antibody. Lane 1: Human Fc. Lane 2: none. Load: 100 ng per lane. Primary antibody: Human Fc antibody at 1:1,000 for overnight at 4°C. Secondary antibody: DyLight™ 649 rabbit secondary antibody at 1:20,000 for 30 min at RT. Block: MB-070 for 30 min at RT. Predicted/Observed size: 28 kDa, 28 kDa for Human Fc. Other band(s): Human Fc splice variants and isoforms.

## Anti-Human IgG F(c) Secondary Antibody - Background

Anti-Human IgG F(c) fragment antibody generated in rabbit detects specifically Human IgG F(c) fragment. This secondary antibody anti-Human is ideal for investigators who routinely perform ELISA, Sandwich ELISA, titration assays, western-blot, immunoprecipitation and more generally immunoassays.