

**Anti-Rabbit IgG (H&L) (Alkaline Phosphatase Conjugated) Pre-Adsorbed Secondary Antibody**  
**Goat Polyclonal, Alkaline Phosphatase (Calf Intestine)**  
**Catalog # ASR2355**

**Specification**

---

**Anti-Rabbit IgG (H&L) (Alkaline Phosphatase Conjugated) Pre-Adsorbed Secondary Antibody - Product Information**

Description	<b>Anti-RABBIT IgG (H&amp;L) (GOAT) Antibody</b> <b>Alkaline Phosphatase Conjugated (Min X</b> <b>Human Serum Proteins)</b>
Host	<b>Goat</b>
Conjugate	<b>Alkaline Phosphatase (Calf Intestine)</b>
Target Species	<b>Rabbit</b>
Reactivity	<b>Rabbit</b>
Clonality	<b>Polyclonal</b>
Application	<b>,1,10,15,</b>
Application Note	<b>ELISA 1:2,000-1:10,000;Western Blot</b> <b>1:500-1:2,500;Immunochemistry</b> <b>1:200-1:1,000</b>
Physical State	<b>Liquid (sterile filtered)</b>
Host Isotype	<b>IgG</b>
Target Isotype	<b>IgG (H&amp;L)</b>
Buffer	<b>0.05 M Tris Chloride, 0.15M Sodium</b> <b>Chloride, 0.001M Magnesium Chloride,</b> <b>0.0001M Zinc Chloride, 50% (v/v) Glycerol;</b> <b>pH 8.0</b>
Immunogen	<b>Anti-Rabbit IgG (H&amp;L) was produced by</b> <b>repeated immunization with Rabbit IgG</b> <b>whole molecule in goat.</b>
Stabilizer	<b>10 mg/mL Bovine Serum Albumin (BSA) -</b> <b>Immunoglobulin and Protease free</b>
Preservative	<b>0.1% (w/v) Sodium Azide</b>

**Anti-Rabbit IgG (H&L) (Alkaline Phosphatase Conjugated) Pre-Adsorbed Secondary Antibody - Additional Information**

**Shipping Condition**

Wet Ice

**Purity**

This product was prepared from monospecific antiserum by immunoaffinity chromatography using Rabbit IgG coupled to agarose beads followed by solid phase adsorption(s) to remove any unwanted reactivities. Assay by immunoelectrophoresis resulted in a single precipitin arc against anti-Alkaline Phosphatase (calf intestine), anti-Goat Serum, Rabbit IgG and Rabbit Serum. No reaction was observed against Human Serum Proteins.

**Storage Condition**

Store vial at 4° C before opening. DO NOT FREEZE. This product is stable at 4° C as an undiluted liquid. Dilute only prior to immediate use. Freezing alkaline phosphatase conjugates will result in a

substantial loss of enzymatic activity.

#### **Precautions Note**

This product is for research use only and is not intended for therapeutic or diagnostic applications.

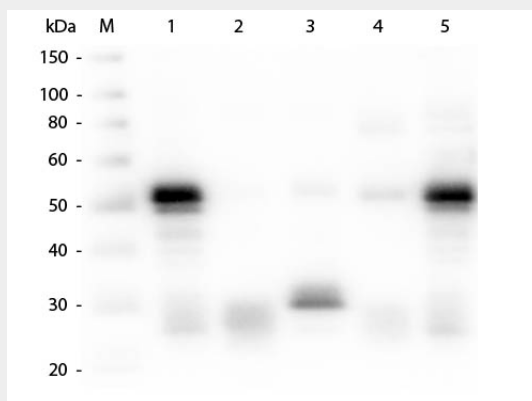
#### **Anti-Rabbit IgG (H&L) (Alkaline Phosphatase Conjugated) Pre-Adsorbed Secondary Antibody - Protein Information**

#### **Anti-Rabbit IgG (H&L) (Alkaline Phosphatase Conjugated) Pre-Adsorbed Secondary Antibody - Protocols**

Provided below are standard protocols that you may find useful for product applications.

- [Western Blot](#)
- [Blocking Peptides](#)
- [Dot Blot](#)
- [Immunohistochemistry](#)
- [Immunofluorescence](#)
- [Immunoprecipitation](#)
- [Flow Cytometry](#)
- [Cell Culture](#)

#### **Anti-Rabbit IgG (H&L) (Alkaline Phosphatase Conjugated) Pre-Adsorbed Secondary Antibody - Images**



Western Blot of Anti-Rabbit IgG (H&L) (GOAT) Antibody . Lane M: 3  $\mu$ l Molecular Ladder. Lane 1: Rabbit IgG whole molecule . Lane 2: Rabbit IgG F(ab) Fragment . Lane 3: Rabbit IgG F(c) Fragment . Lane 4: Rabbit IgM Whole Molecule . Lane 5: Normal Rabbit Serum . All samples were reduced. Load: 50 ng per lane. Block: MB-070 for 30 min at RT. Primary Antibody: Anti-Rabbit IgG (H&L) (GOAT) Antibody 1:1,000 for 60 min at RT. Secondary antibody: Anti-Goat IgG (DONKEY) Peroxidase Conjugated Antibody 1:40,000 in MB-070 for 30 min at RT. Predicted/Observed Size: 25 and 50 kDa for Rabbit IgG and Serum, 25 kDa for F(c) and F(ab), 70 and 23 kDa for IgM. Rabbit F(c) migrates slightly higher.

#### **Anti-Rabbit IgG (H&L) (Alkaline Phosphatase Conjugated) Pre-Adsorbed Secondary Antibody - Background**

Anti-Rabbit IgG (H&L) antibody generated in goat detects specifically rabbit IgG (H&L). This secondary antibody anti-Rabbit is ideal for investigators who routinely perform titration assays,

western-blot, immunoprecipitation and more generally immunoassays.