

Anti-Rat IgA (alpha chain) (Fluorescein Conjugated) Secondary Antibody
Goat Polyclonal, Fluorescein (FITC)
Catalog # ASR2405**Specification****Anti-Rat IgA (alpha chain) (Fluorescein Conjugated) Secondary Antibody - Product Information**

Description	Anti-RAT IgA (alpha chain) (GOAT) Antibody Fluorescein Conjugated
Host	Goat
Conjugate	Fluorescein (FITC)
FP Value	9.4 moles Fluorescein (FITC) per mole of IgG
Target Species	Rat
Clonality	Polyclonal
Application	,3,4,
Application Note	FLISA 1:10,000-1:50,000;IF Microscopy 1:1,000-1:5,000;FlowCytometry 1:500-1:2,500
Physical State	Lyophilized
Host Isotype	IgG
Target Isotype	IgA
Buffer	0.02 M Potassium Phosphate, 0.15 M Sodium Chloride, pH 7.2
Immunogen	Rat IgA alpha heavy chain
Reconstitution Volume	1.0 mL
Reconstitution Buffer	Restore with deionized water (or equivalent)
Stabilizer	10 mg/mL Bovine Serum Albumin (BSA) - Immunoglobulin and Protease free
Preservative	0.01% (w/v) Sodium Azide

Anti-Rat IgA (alpha chain) (Fluorescein Conjugated) Secondary Antibody - Additional Information**Shipping Condition**

Ambient

Purity

This product was prepared from monospecific antiserum by immunoaffinity chromatography using Rat IgA coupled to agarose beads followed by solid phase adsorption(s) to remove any unwanted reactivities. Assay by immunoelectrophoresis resulted in a single precipitin arc against anti-Fluorescein, anti-Goat Serum, Rat IgA and Rat Serum. Specificity was confirmed by ELISA at less than 1% cross reactivity against other rat heavy or light chain isotypes.

Storage Condition

Store vial at 4° C prior to restoration. For extended storage aliquot contents and freeze at -20° C or below. Avoid cycles of freezing and thawing. Centrifuge product if not completely clear after standing at room temperature. This product is stable for several weeks at 4° C as an undiluted liquid. Dilute only prior to immediate use.

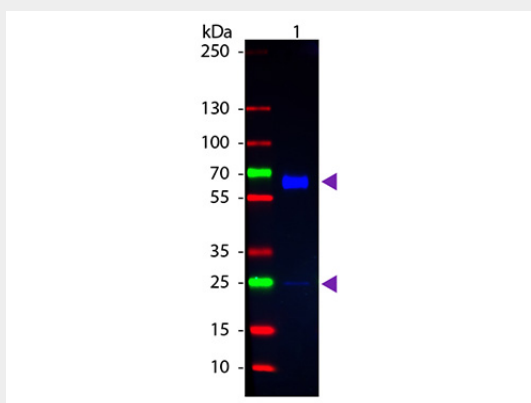
Precautions Note

This product is for research use only and is not intended for therapeutic or diagnostic applications.

Anti-Rat IgA (alpha chain) (Fluorescein Conjugated) Secondary Antibody - Protein Information**Anti-Rat IgA (alpha chain) (Fluorescein Conjugated) Secondary Antibody - Protocols**

Provided below are standard protocols that you may find useful for product applications.

- [Western Blot](#)
- [Blocking Peptides](#)
- [Dot Blot](#)
- [Immunohistochemistry](#)
- [Immunofluorescence](#)
- [Immunoprecipitation](#)
- [Flow Cytometry](#)
- [Cell Culture](#)

Anti-Rat IgA (alpha chain) (Fluorescein Conjugated) Secondary Antibody - Images

Western blot of Fluorescein conjugated Goat Anti-Rat IgA (Alpha chain) secondary antibody. Lane 1: Mouse IgA Kappa chain. Lane 2: None. Load: 100 ng per lane. Primary antibody: None. Secondary antibody: Fluorescein goat secondary antibody at 1:1,000 for 60 min at RT. Blocking: MB-070 for 30 min at RT. Observed/Predicted size: 55 kDa, 55 kDa for Rat IgA. Other band(s): IgA light chain.

Anti-Rat IgA (alpha chain) (Fluorescein Conjugated) Secondary Antibody - Background

This product is designed for immunofluorescence microscopy, fluorescence based plate assays (FLISA) and fluorescent western blotting. This product is also suitable for multiplex analysis, including multicolor imaging, utilizing various commercial platforms.