

Chicken IgG F(ab')₂ (Agarose Conjugated)
Catalog # ASR2412**Specification**

Chicken IgG F(ab')₂ (Agarose Conjugated) - Product Information

Description	CHICKEN IgG F(ab')₂ fragment
Conjugate	Agarose Conjugated
Physical State	Unconjugated
Buffer	Suspension of agarose beads
	0.01 M Sodium Phosphate, 0.15 M Sodium Chloride, pH 7.2
Species of Origin	Chicken
Stabilizer	None
Preservative	0.5% (w/v) Sodium Azide

Chicken IgG F(ab')₂ (Agarose Conjugated) - Additional Information**Shipping Condition**

Wet Ice

Purity

This product is an purified Chicken IgG isolated from normal Chicken Serum digested by the enzyme pepsin and purified by chromatography coupled to activated agarose. Sufficient antibody capacity is provided to bind a minimum of 5 mg of anti-Chicken IgG.

Storage Condition

Store vial at 4° C prior to opening. DO NOT FREEZE.

Precautions Note

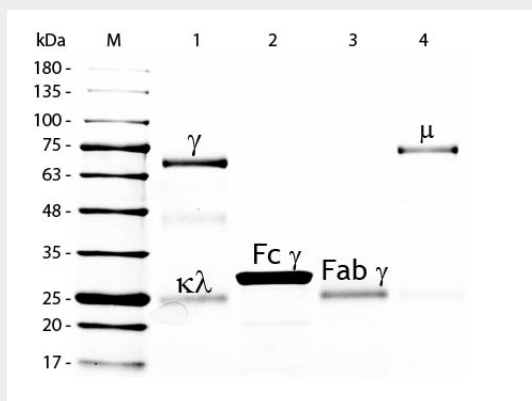
This product is for research use only and is not intended for therapeutic or diagnostic applications.

Chicken IgG F(ab')₂ (Agarose Conjugated) - Protein Information**Chicken IgG F(ab')₂ (Agarose Conjugated) - Protocols**

Provided below are standard protocols that you may find useful for product applications.

- [Western Blot](#)
- [Blocking Peptides](#)
- [Dot Blot](#)
- [Immunohistochemistry](#)
- [Immunofluorescence](#)
- [Immunoprecipitation](#)
- [Flow Cytometry](#)
- [Cell Culture](#)

Chicken IgG F(ab')₂ (Agarose Conjugated) - Images



SDS-PAGE of Chicken IgG F(ab')₂ Fragment Agarose conjugated . Lane M: 5 μL Opal Prestained Marker . Lane 1: Reduced Chicken IgG Whole Molecule . Lane 2: Reduced Chicken IgG F(c) Fragment . Lane 3: Reduced Chicken IgG F(ab')₂ Fragment Agarose Conjugated . Lane 4: Reduced Chicken IgM Whole Molecule . Load: 1 μg per lane. Predicted/Observed size: IgG at 72 and 25 kDa; F(c) at 25 kDa; F(ab')₂ at 25 kDa; IgM at 75 kDa. Observed F(c) Fragment migrates slightly higher. Other bands: Chicken IgG heavy chain alternative splicing variant at approximately 40 kDa in Lane 1.