

Mouse IgG F(ab')₂ (Agarose Conjugated)
Catalog # ASR2421**Specification**

Mouse IgG F(ab')₂ (Agarose Conjugated) - Product Information

| | |
|-------------------|--|
| Description | MOUSE IgG F(ab')₂ fragment |
| Conjugate | Agarose Conjugated |
| Physical State | Unconjugated |
| Buffer | Suspension of agarose beads |
| | 0.02 M Potassium Phosphate, 0.15 M |
| | Sodium Chloride, pH 7.2 |
| Species of Origin | Mouse |
| Stabilizer | None |
| Preservative | 0.01% (w/v) Sodium Azide |

Mouse IgG F(ab')₂ (Agarose Conjugated) - Additional Information**Shipping Condition**

Wet Ice

Purity

This product is an purified Mouse IgG isolated from normal Mouse Serum digested by the enzyme pepsin and purified by chromatography coupled to activated agarose. Sufficient antibody capacity is provided to bind a minimum of 5.0 mg of anti-Mouse IgG.

Storage Condition

Store vial at 4° C prior to opening. DO NOT FREEZE.

Precautions Note

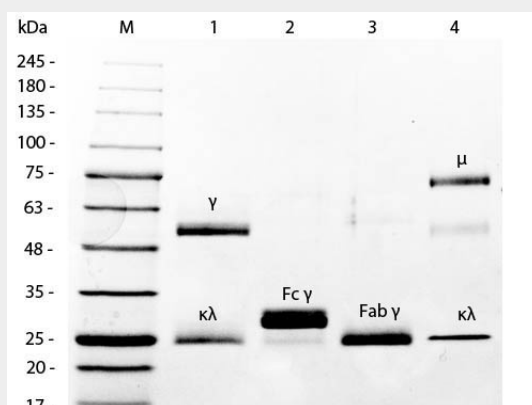
This product is for research use only and is not intended for therapeutic or diagnostic applications.

Mouse IgG F(ab')₂ (Agarose Conjugated) - Protein Information**Mouse IgG F(ab')₂ (Agarose Conjugated) - Protocols**

Provided below are standard protocols that you may find useful for product applications.

- [Western Blot](#)
- [Blocking Peptides](#)
- [Dot Blot](#)
- [Immunohistochemistry](#)
- [Immunofluorescence](#)
- [Immunoprecipitation](#)
- [Flow Cytometry](#)
- [Cell Culture](#)

Mouse IgG F(ab')₂ (Agarose Conjugated) - Images



SDS-PAGE of Mouse IgG F(ab')₂ Fragment Agarose Conjugated . Lane 1: 5 μ L Opal Prestained Marker . Lane 2: Reduced Mouse IgG Whole Molecule . Lane 3: Reduced Mouse F(c) Fragment . Lane 4: Reduced Mouse F(ab')₂ Fragment Agarose Conjugated . Lane 5: Mouse IgM Kappa Myeloma Protein . Load: 1 μ g per lane. Predicted/Observed size: IgG at 50 and 25 kDa; F(c) at 25 kDa; F(ab')₂ at 25 kDa; IgM K at 70 and 23 kDa. Observed F(c) Fragment migrates slightly higher.