

Rat IgG F(ab')₂ (Agarose Conjugated)
Catalog # ASR2426**Specification**

Rat IgG F(ab')₂ (Agarose Conjugated) - Product Information

Description	RAT IgG F(ab')₂ fragment Agarose Conjugated
Conjugate	Unconjugated
Physical State	Suspension of agarose beads
Buffer	0.02 M Potassium Phosphate, 0.15 M Sodium Chloride, pH 7.2
Species of Origin	Rat
Stabilizer	None
Preservative	0.01% (w/v) Sodium Azide

Rat IgG F(ab')₂ (Agarose Conjugated) - Additional Information**Shipping Condition**

Wet Ice

Purity

This product is an purified Rat IgG isolated from normal Rat Serum digested by the enzyme pepsin and purified by chromatography coupled to activated agarose. Sufficient antibody capacity is provided to bind a minimum of 5.0 of anti-Rat IgG.

Storage Condition

Store vial at 4° C prior to opening. DO NOT FREEZE.

Precautions Note

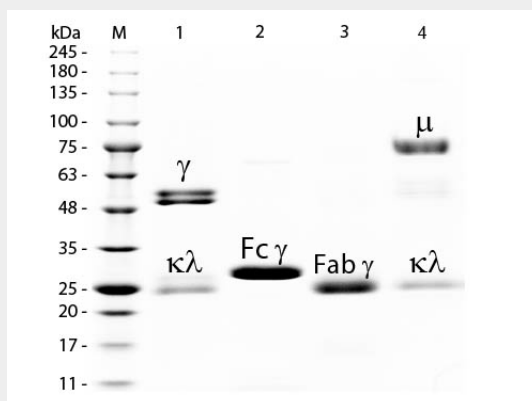
This product is for research use only and is not intended for therapeutic or diagnostic applications.

Rat IgG F(ab')₂ (Agarose Conjugated) - Protein Information**Rat IgG F(ab')₂ (Agarose Conjugated) - Protocols**

Provided below are standard protocols that you may find useful for product applications.

- [Western Blot](#)
- [Blocking Peptides](#)
- [Dot Blot](#)
- [Immunohistochemistry](#)
- [Immunofluorescence](#)
- [Immunoprecipitation](#)
- [Flow Cytometry](#)
- [Cell Culture](#)

Rat IgG F(ab')₂ (Agarose Conjugated) - Images



SDS-PAGE of Rat IgG F(ab')₂ Fragment Agarose Conjugated . Lane M: 3 μ L Opal Prestained Marker . Lane 1: Reduced Rat IgG Whole Molecule . Lane 2: Reduced Rat IgG F(c) Fragment . Lane 3: Reduced Rat IgG F(ab')₂ Fragment Agarose Conjugated . Lane 4: Reduced Rat IgM Whole Molecule . Load: 1 μ g of IgG, F(c) and F(ab')₂; 1.5 μ g of IgM. Predicted/Observed size: IgG at 55 and 25 kDa; F(c) at 25 kDa; F(ab')₂ at 25 kDa; IgM at 78 and 25 kDa. Observed F(c) Fragment migrates slightly higher.