

Rat IgM Fluorescein
Catalog # ASR2427**Specification**

Rat IgM Fluorescein - Product Information

Description	RAT IgM whole molecule Fluorescein conjugated
Conjugate	Fluorescein (FITC)
FP Value	20.8 moles Fluorescein (FITC) per mole of Rat IgM
Physical State	Lyophilized
Host Isotype	IgM
Buffer	0.06 M Potassium Phosphate, 0.45 M Sodium Chloride, pH 7.2
Species of Origin	Rat
Reconstitution Volume	500 μL
Reconstitution Buffer	Restore with deionized water (or equivalent)
Stabilizer	10 mg/mL Bovine Serum Albumin (BSA) - Immunoglobulin and Protease free
Preservative	0.01% (w/v) Sodium Azide

Rat IgM Fluorescein - Additional Information**Shipping Condition**

Ambient

Purity

This product was prepared from normal serum by a multi-step process which includes delipidation, selective precipitation and tandem molecular sieve chromatography followed by extensive dialysis against the buffer stated above. Assay by immunoelectrophoresis resulted in a single precipitin arc against anti-Fluorescein, anti-Rat Serum and anti-Rat IgM (μ chain specific). No reaction was observed against anti-Rat IgG F(c). Some light chain cross reactivity will occur with anti-Rat IgG.

Storage Condition

Store vial at 4° C prior to restoration. For extended storage aliquot contents and freeze at -20° C or below. Avoid cycles of freezing and thawing. Centrifuge product if not completely clear after standing at room temperature. This product is stable for several weeks at 4° C as an undiluted liquid. Dilute only prior to immediate use.

Precautions Note

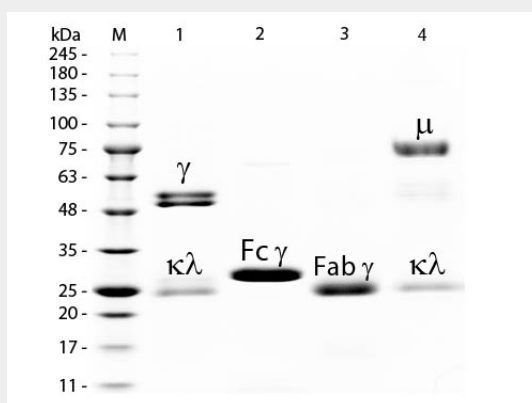
This product is for research use only and is not intended for therapeutic or diagnostic applications.

Rat IgM Fluorescein - Protein Information**Rat IgM Fluorescein - Protocols**

Provided below are standard protocols that you may find useful for product applications.

- [Western Blot](#)
- [Blocking Peptides](#)
- [Dot Blot](#)
- [Immunohistochemistry](#)
- [Immunofluorescence](#)
- [Immunoprecipitation](#)
- [Flow Cytometry](#)
- [Cell Culture](#)

Rat IgM Fluorescein - Images



SDS-PAGE of Rat IgM Whole Molecule Fluorescein Conjugated . Lane M: 3 μ L Opal Prestained Marker . Lane 1: Reduced Rat IgG Whole Molecule . Lane 2: Reduced Rat IgG F(c) Fragment . Lane 3: Reduced Rat IgG F(ab) Fragment . Lane 4: Reduced Rat IgM Whole Molecule Fluorescein Conjugated . Load: 1 μ g of IgG, F(c), F(ab); 1.5 μ g of IgM. Predicted/Observed size: IgG at 55 and 25 kDa; F(c) at 25 kDa; F(ab) at 25 kDa; IgM at 78 and 25 kDa. Observed F(c) Fragment migrates slightly higher.

Rat IgM Fluorescein - Background

This product is designed for immunofluorescence microscopy, fluorescence based plate assays (FLISA) and fluorescent western blotting. This product is also suitable for multiplex analysis, including multicolor imaging, utilizing various commercial platforms.