

Anti-Chicken IgM (mu chain) (Texas Red™ Conjugated) Secondary Antibody
Goat Polyclonal, Texas Red®
Catalog # ASR2442**Specification****Anti-Chicken IgM (mu chain) (Texas Red™ Conjugated) Secondary Antibody - Product Information**

| | |
|-----------------------|--|
| Description | Anti-CHICKEN IgM (mu chain) (GOAT) Antibody Texas Red™ Conjugated |
| Host | Goat |
| Conjugate | Texas Red® |
| FP Value | 4.6 moles Texas Red® per mole of IgG |
| Target Species | Chicken |
| Clonality | Polyclonal |
| Application | ,3,4, |
| Application Note | FLISA 1:10,000-1:50,000;IF Microscopy 1:1,000-1:5,000;FlowCytometry 1:500-1:2,500 |
| Physical State | Lyophilized |
| Host Isotype | IgG |
| Target Isotype | IgM μ chain |
| Buffer | 0.02 M Potassium Phosphate, 0.15 M Sodium Chloride, pH 7.2 |
| Immunogen | Chicken IgM mu heavy chain |
| Reconstitution Volume | 1.0 mL |
| Reconstitution Buffer | Restore with deionized water (or equivalent) |
| Stabilizer | 10 mg/mL Bovine Serum Albumin (BSA) - Immunoglobulin and Protease free |
| Preservative | 0.01% (w/v) Sodium Azide |

Anti-Chicken IgM (mu chain) (Texas Red™ Conjugated) Secondary Antibody - Additional Information**Shipping Condition**

Ambient

Purity

This product was prepared from monospecific antiserum by immunoaffinity chromatography using Chicken antigens coupled to agarose beads followed by solid phase adsorption(s) to remove any unwanted reactivities. Assay by immunoelectrophoresis resulted in a single precipitin arc against anti-Goat Serum, Chicken IgM and Chicken Serum. No reaction was observed against Chicken IgG.

Storage Condition

Store vial at 4° C prior to restoration. For extended storage aliquot contents and freeze at -20° C or below. Avoid cycles of freezing and thawing. Centrifuge product if not completely clear after standing at room temperature. This product is stable for several weeks at 4° C as an undiluted liquid. Dilute only prior to immediate use.

Precautions Note

This product is for research use only and is not intended for therapeutic or diagnostic applications.

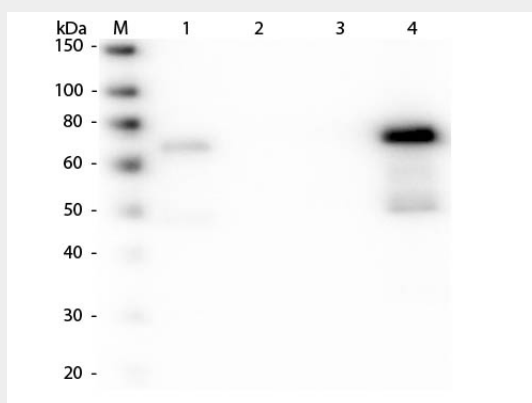
Anti-Chicken IgM (mu chain) (Texas Red™ Conjugated) Secondary Antibody - Protein Information

Anti-Chicken IgM (mu chain) (Texas Red™ Conjugated) Secondary Antibody - Protocols

Provided below are standard protocols that you may find useful for product applications.

- [Western Blot](#)
- [Blocking Peptides](#)
- [Dot Blot](#)
- [Immunohistochemistry](#)
- [Immunofluorescence](#)
- [Immunoprecipitation](#)
- [Flow Cytometry](#)
- [Cell Culture](#)

Anti-Chicken IgM (mu chain) (Texas Red™ Conjugated) Secondary Antibody - Images



Western Blot of Anti-Chicken IgM (mu chain) (GOAT) Antibody Peroxidase Conjugated . Lane M: 3 µl Molecular Ladder. Lane 1: Chicken IgG whole molecule . Lane 2: Chicken IgG F(c) Fragment . Lane 3: Chicken IgG F(ab) Fragment . Lane 4: Chicken IgM Whole Molecule . All samples were reduced. Load: 50 ng per lane. Block: MB-070 for 30 min at RT. Primary Antibody: Anti-Chicken IgM (mu chain) (GOAT) Antibody Peroxidase Conjugated 1:30,000 for 60 min at RT. Predicted/Observed Size: 25 and 72 kDa for Chicken IgG, 25 kDa for F(c) and F(ab), 75 kDa for IgM. Chicken F(c) migrates slightly higher.

Anti-Chicken IgM (mu chain) (Texas Red™ Conjugated) Secondary Antibody - Background

This product is designed for immunofluorescence microscopy, fluorescence based plate assays (FLISA) and fluorescent western blotting. This product is also suitable for multiplex analysis, including multicolor imaging, utilizing various commercial platforms.