

**Anti-Human IgG (H&L) (Peroxidase Conjugated) Secondary Antibody**  
**Chicken Polyclonal, Peroxidase (Horseradish)**  
**Catalog # ASR2479****Specification****Anti-Human IgG (H&L) (Peroxidase Conjugated) Secondary Antibody - Product Information**

Description	<b>Anti-HUMAN IgG (H&amp;L) (CHICKEN) Antibody</b>
Host	<b>Peroxidase Conjugated</b>
Conjugate	<b>Chicken</b>
Target Species	<b>Peroxidase (Horseradish)</b>
Clonality	<b>Human</b>
Application	<b>Polyclonal</b>
Application Note	<b>WB, E, IC</b>
	<b>ELISA 1:30,000;Western Blot</b>
	<b>1:1,000-1:5,000;Immunochemistry</b>
	<b>1:500-1:2,500</b>
Physical State	<b>Lyophilized</b>
Host Isotype	<b>IgG</b>
Target Isotype	<b>IgG (H&amp;L)</b>
Buffer	<b>0.02 M Potassium Phosphate, 0.15 M</b>
	<b>Sodium Chloride, pH 7.2</b>
Immunogen	<b>Human IgG whole molecule</b>
Reconstitution Volume	<b>1.0 mL</b>
Reconstitution Buffer	<b>Restore with deionized water (or</b>
	<b>equivalent)</b>
Stabilizer	<b>10 mg/mL Bovine Serum Albumin (BSA) -</b>
	<b>Immunoglobulin and Protease free</b>
Preservative	<b>0.01% (w/v) Gentamicin Sulfate. Do NOT</b>
	<b>add Sodium Azide!</b>

**Anti-Human IgG (H&L) (Peroxidase Conjugated) Secondary Antibody - Additional Information****Shipping Condition**

Ambient

**Purity**

Human IgG (H&L) Antibody Peroxidase Conjugate was prepared from monospecific antiserum by immunoaffinity chromatography using Human IgG coupled to agarose. Assay by immunoelectrophoresis resulted in a single precipitin arc against anti-Peroxidase, anti-Chicken Serum, Human IgG and Human Serum.

**Storage Condition**

Store vial at 4° C prior to restoration. For extended storage aliquot contents and freeze at -20° C or below. Avoid cycles of freezing and thawing. Centrifuge product if not completely clear after standing at room temperature. This product is stable for several weeks at 4° C as an undiluted liquid. Dilute only prior to immediate use.

**Precautions Note**

This product is for research use only and is not intended for therapeutic or diagnostic applications.

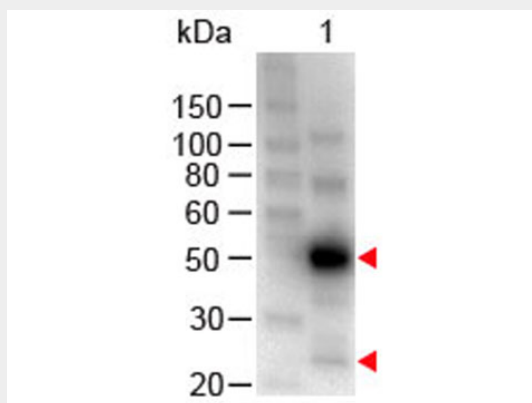
### **Anti-Human IgG (H&L) (Peroxidase Conjugated) Secondary Antibody - Protein Information**

### **Anti-Human IgG (H&L) (Peroxidase Conjugated) Secondary Antibody - Protocols**

Provided below are standard protocols that you may find useful for product applications.

- [Western Blot](#)
- [Blocking Peptides](#)
- [Dot Blot](#)
- [Immunohistochemistry](#)
- [Immunofluorescence](#)
- [Immunoprecipitation](#)
- [Flow Cytometry](#)
- [Cell Culture](#)

### **Anti-Human IgG (H&L) (Peroxidase Conjugated) Secondary Antibody - Images**



Western Blot of Chicken anti-Human IgG (H&L) Antibody Peroxidase Conjugated. Lane 1: Human IgG. Load: 100 ng per lane. Secondary antibody: Human IgG (H&L) Antibody Peroxidase Conjugated at 1:1,000 for 60 min at RT. Block: MB-070 for 30 min at RT. Predicted/Observed size: 55 and 28 kDa, 55 and 28 kDa.

### **Anti-Human IgG (H&L) (Peroxidase Conjugated) Secondary Antibody - Background**

Anti-Human IgG (H&L) Antibody Peroxidase Conjugated antibody detects human IgG. IgG antibodies are large molecules of about 150 kDa composed of four peptide chains. Each IgG contains two identical  $\gamma$  heavy chains of about 51 kDa and two identical light chains of about 26 kDa, thus a tetrameric quaternary structure. The two heavy chains are linked to each other and to a light chain each by disulfide bonds. The resulting tetramer has two identical halves, which together form the Y-like shape. Each end of the fork contains an identical antigen binding site. The Fc regions of IgGs bear a highly conserved N-glycosylation site.