

**Anti-Rat IgG (H&L) (Peroxidase Conjugated) Secondary Antibody**  
**Chicken Polyclonal, Peroxidase (Horseradish)**  
**Catalog # ASR2499****Specification****Anti-Rat IgG (H&L) (Peroxidase Conjugated) Secondary Antibody - Product Information**

Description	<b>Anti-RAT IgG (H&amp;L) (CHICKEN) Antibody</b>
Host	<b>Peroxidase Conjugated</b>
Conjugate	<b>Chicken</b>
Target Species	<b>Peroxidase (Horseradish)</b>
Clonality	<b>Rat</b>
Application	<b>Polyclonal</b>
Application Note	<b>WB, E, IC</b>
	<b>ELISA 1:10,000-1:100,000;Western Blot</b>
	<b>1:1,000-1:10,000;Immunochemistry</b>
	<b>1:500-1:2,500</b>
Physical State	<b>Lyophilized</b>
Host Isotype	<b>IgG</b>
Target Isotype	<b>IgG (H&amp;L)</b>
Buffer	<b>0.02 M Potassium Phosphate, 0.15 M</b>
	<b>Sodium Chloride, pH 7.2</b>
Immunogen	<b>Rat IgG whole molecule</b>
Reconstitution Volume	<b>1.0 mL</b>
Reconstitution Buffer	<b>Restore with deionized water (or</b>
	<b>equivalent)</b>
Stabilizer	<b>10 mg/mL Bovine Serum Albumin (BSA) -</b>
	<b>Immunoglobulin and Protease free</b>
Preservative	<b>0.01% (w/v) Gentamicin Sulfate. Do NOT</b>
	<b>add Sodium Azide!</b>

**Anti-Rat IgG (H&L) (Peroxidase Conjugated) Secondary Antibody - Additional Information****Shipping Condition**

Ambient

**Purity**

Anti-RAT IgG antibody, Peroxidase Conjugate, was prepared from monospecific antiserum by immunoaffinity chromatography using Rat IgG coupled to agarose. Assay by immunoelectrophoresis resulted in a single precipitin arc against anti-Peroxidase, anti-Chicken Serum, Rat IgG and Rat Serum.

**Storage Condition**

Store vial at 4° C prior to restoration. For extended storage aliquot contents and freeze at -20° C or below. Avoid cycles of freezing and thawing. Centrifuge product if not completely clear after standing at room temperature. This product is stable for several weeks at 4° C as an undiluted liquid. Dilute only prior to immediate use.

**Precautions Note**

This product is for research use only and is not intended for therapeutic or diagnostic applications.

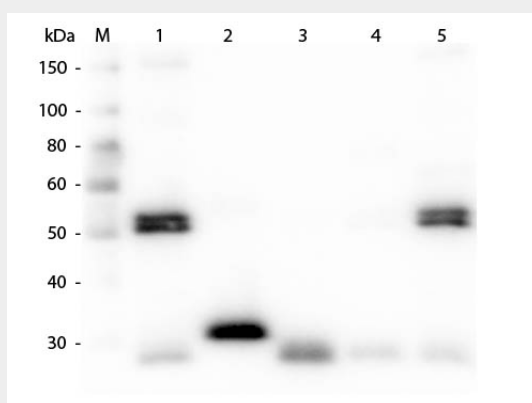
## Anti-Rat IgG (H&L) (Peroxidase Conjugated) Secondary Antibody - Protein Information

## Anti-Rat IgG (H&L) (Peroxidase Conjugated) Secondary Antibody - Protocols

Provided below are standard protocols that you may find useful for product applications.

- [Western Blot](#)
- [Blocking Peptides](#)
- [Dot Blot](#)
- [Immunohistochemistry](#)
- [Immunofluorescence](#)
- [Immunoprecipitation](#)
- [Flow Cytometry](#)
- [Cell Culture](#)

## Anti-Rat IgG (H&L) (Peroxidase Conjugated) Secondary Antibody - Images



Western Blot of Anti-Rat IgG (H&L) (CHICKEN) Antibody . Lane M: 3  $\mu$ l Molecular Ladder. Lane 1: Rat IgG whole molecule . Lane 2: Rat IgG F(c) Fragment . Lane 3: Rat IgG F(ab) Fragment . Lane 4: Rat IgM Whole Molecule . Lane 5: Rat Serum . All samples were reduced. Load: 50 ng per lane. Block: MB-070 for 30 min at RT. Primary Antibody: Anti-Rat IgG (H&L) (CHICKEN) Antibody 1:1,000 for 60 min at RT. Secondary Antibody: Anti-Chicken IgG (GOAT) Peroxidase Conjugated Antibody 1:40,000 in MB-070 for 30 min at RT. Predicted/Observed Size: 25 and 55 kDa for Rat IgG and Serum, 25 kDa for F(c) and F(ab), 78 and 25 kDa for IgM. Rat F(c) migrates slightly higher.

## Anti-Rat IgG (H&L) (Peroxidase Conjugated) Secondary Antibody - Background

RAT IgG Antibody, Peroxidase Conjugated, is specific for the heavy and light chains of all subclasses of Rat immunoglobulin G. Rat immunoglobulin G can be categorized into 4 IgG sub classes: IgG1, IgG2a, IgG2b, IgG2c.