

**Anti-Monkey IgM (mu chain) (Biotin Conjugated) Secondary Antibody**  
**Goat Polyclonal, Biotin**  
**Catalog # ASR2508****Specification****Anti-Monkey IgM (mu chain) (Biotin Conjugated) Secondary Antibody - Product Information**

Description	<b>Anti-MONKEY IgM (mu chain) (GOAT) Antibody Biotin Conjugated</b>
Host	<b>Goat</b>
Conjugate	<b>Biotin</b>
FP Value	<b>10-20 moles Biotin per mole of IgG</b>
Target Species	<b>Monkey</b>
Clonality	<b>Polyclonal</b>
Application	<b>WB, E, IC</b>
Application Note	<b>ELISA 1:20,000-1:300,000;Western Blot 1:2,000-1:10,000;Immunochemistry 1:1,000-1:5,000</b>
Physical State	<b>Lyophilized</b>
Host Isotype	<b>IgG</b>
Target Isotype	<b>IgM <math>\mu</math> chain</b>
Buffer	<b>0.02 M Potassium Phosphate, 0.15 M Sodium Chloride, pH 7.2</b>
Immunogen	<b>Anti-Monkey IgM (mu) antibody was produced by repeated immunization with monkey IgM mu heavy chain in goat.</b>
Reconstitution Volume	<b>1.0 mL</b>
Reconstitution Buffer	<b>Restore with deionized water (or equivalent)</b>
Stabilizer	<b>10 mg/mL Bovine Serum Albumin (BSA) - Immunoglobulin and Protease free</b>
Preservative	<b>0.01% (w/v) Sodium Azide</b>

**Anti-Monkey IgM (mu chain) (Biotin Conjugated) Secondary Antibody - Additional Information****Shipping Condition**

Ambient

**Purity**

This product was prepared from monospecific antiserum by immunoaffinity chromatography using Monkey IgM coupled to agarose beads followed by solid phase adsorption(s) to remove any unwanted reactivities. Assay by immunoelectrophoresis resulted in a single precipitin arc against anti-biotin, anti-Goat Serum, Monkey IgM and Monkey Serum. No reaction was observed against Monkey IgA or Monkey IgG.

**Storage Condition**

Store vial at 4° C prior to restoration. For extended storage aliquot contents and freeze at -20° C or below. Avoid cycles of freezing and thawing. Centrifuge product if not completely clear after standing at room temperature. This product is stable for several weeks at 4° C as an undiluted

liquid. Dilute only prior to immediate use.

#### Precautions Note

This product is for research use only and is not intended for therapeutic or diagnostic applications.

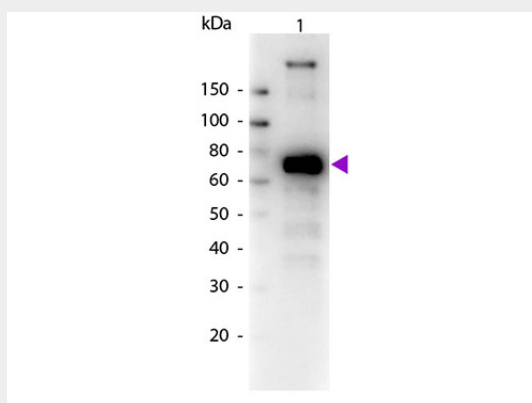
#### Anti-Monkey IgM (mu chain) (Biotin Conjugated) Secondary Antibody - Protein Information

#### Anti-Monkey IgM (mu chain) (Biotin Conjugated) Secondary Antibody - Protocols

Provided below are standard protocols that you may find useful for product applications.

- [Western Blot](#)
- [Blocking Peptides](#)
- [Dot Blot](#)
- [Immunohistochemistry](#)
- [Immunofluorescence](#)
- [Immunoprecipitation](#)
- [Flow Cytometry](#)
- [Cell Culture](#)

#### Anti-Monkey IgM (mu chain) (Biotin Conjugated) Secondary Antibody - Images



Western Blot of Biotin conjugated Goat Anti-Monkey IgM (mu chain) secondary antibody. Lane 1: Monkey IgM. Lane 2: None. Load: 50 ng per lane. Primary antibody: None. Secondary antibody: Biotin goat secondary antibody at 1:1,000 for 60 min at RT. Block: MB-070 for 30 min t RT. Predicted/Observed size: 72 kDa, 72 kDa for Monkey IgM. Other band(s): None.

Product	Gt-a-Monkey IgG	Gt-a-Monkey IgA	Gt-a-Monkey IgM
Rhesus Serum	+	+	+
Baboon Serum	+	+	+
Cynomolgus Serum	+	+	+
Rhesus IgG	+		
Human IgA		+	
Human IgM			+

This table displays additional reactivity among various species of serum and immunoglobulin. A (+) indicates antibody reactivity to the corresponding target.

#### **Anti-Monkey IgM (mu chain) (Biotin Conjugated) Secondary Antibody - Background**

Anti-Monkey IgM (mu chain) biotin conjugated antibody generated in goat detects specifically monkey IgM (mu chain). This secondary biotin conjugated antibody anti-Monkey is ideal for investigators who routinely perform titration assays, western-blot, immunoprecipitation and more generally immunoassays.