

Anti-Monkey IgA (alpha chain) (Biotin Conjugated) Secondary Antibody
Goat Polyclonal, Biotin
Catalog # ASR2543**Specification****Anti-Monkey IgA (alpha chain) (Biotin Conjugated) Secondary Antibody - Product Information**

Description	Anti-MONKEY IgA (alpha chain) (GOAT) Antibody Biotin Conjugated
Host	Goat
Conjugate	Biotin
Target Species	Monkey
Clonality	Polyclonal
Application	WB, E, IC
Application Note	ELISA 1:100,000;Western Blot 1:2,000-1:10,000;Immunochemistry 1:1,000-1:5,000
Physical State	Lyophilized
Host Isotype	IgG
Target Isotype	IgA
Buffer	0.02 M Potassium Phosphate, 0.15 M Sodium Chloride, pH 7.2
Immunogen	Anti-Monkey IgA alpha heavy chain was produced by repeated immunization with Monkey IgA alpha heavy chain in goat.
Reconstitution Volume	1.0 mL
Reconstitution Buffer	Restore with deionized water (or equivalent)
Stabilizer	10 mg/mL Bovine Serum Albumin (BSA) - Immunoglobulin and Protease free
Preservative	0.01% (w/v) Sodium Azide

Anti-Monkey IgA (alpha chain) (Biotin Conjugated) Secondary Antibody - Additional Information**Shipping Condition****Ambient****Purity**

This product was prepared from monospecific antiserum by immunoaffinity chromatography using Monkey IgA coupled to agarose beads followed by solid phase adsorption(s) to remove any unwanted reactivities. Assay by immunoelectrophoresis resulted in a single precipitin arc against anti-Biotin and anti-Goat Serum. Specificity was confirmed by ELISA at less than 5% cross reactivity to IgM or IgG.

Storage Condition

Store vial at 4° C prior to restoration. For extended storage aliquot contents and freeze at -20° C or below. Avoid cycles of freezing and thawing. Centrifuge product if not completely clear after standing at room temperature. This product is stable for several weeks at 4° C as an undiluted liquid. Dilute only prior to immediate use.

Precautions Note

This product is for research use only and is not intended for therapeutic or diagnostic applications.

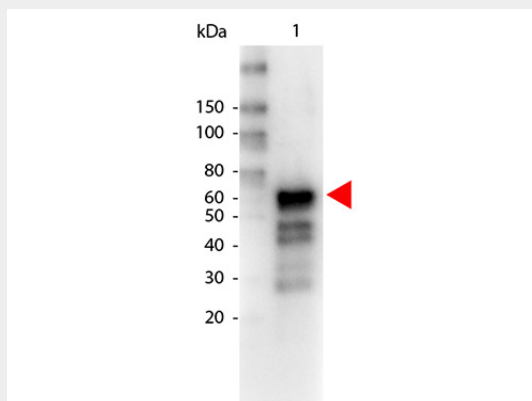
Anti-Monkey IgA (alpha chain) (Biotin Conjugated) Secondary Antibody - Protein Information

Anti-Monkey IgA (alpha chain) (Biotin Conjugated) Secondary Antibody - Protocols

Provided below are standard protocols that you may find useful for product applications.

- [Western Blot](#)
- [Blocking Peptides](#)
- [Dot Blot](#)
- [Immunohistochemistry](#)
- [Immunofluorescence](#)
- [Immunoprecipitation](#)
- [Flow Cytometry](#)
- [Cell Culture](#)

Anti-Monkey IgA (alpha chain) (Biotin Conjugated) Secondary Antibody - Images



Western Blot of Biotin conjugated Goat anti-MONKEY IgA alpha antibody. Lane 1: Human IgA. Lane 2: none. Load: 50 ng per lane. Primary antibody: Biotin Monkey IgA alpha antibody at 1:1,000 for overnight at 4°C. Secondary antibody: HRP Streptavidin secondary antibody at 1:40,000 for 30 min at RT. Block: MB-070 for 30 min at RT. Predicted/Observed size: 60 kDa for Monkey IgA. Other band(s): none.

Product	Gt-a-Monkey IgG	Gt-a-Monkey IgA	Gt-a-Monkey IgM
Rhesus Serum	+	+	+
Baboon Serum	+	+	+
Cynomolgus Serum	+	+	+
Rhesus IgG	+		
Human IgA		+	
Human IgM			+

This table displays additional reactivity among various species of serum and immunoglobulin. A (+) indicates antibody reactivity to the corresponding target.

Anti-Monkey IgA (alpha chain) (Biotin Conjugated) Secondary Antibody - Background

Anti-Monkey IgA alpha heavy chain antibody generated in goat detects specifically Monkey IgA alpha heavy chain. This secondary antibody anti-Monkey is ideal for investigators who routinely perform ELISA, Sandwich ELISA, titration assays, western-blot, immunoprecipitation and more generally immunoassays.