

Anti-Chicken IgG (H&L) (Texas Red™ Conjugated) Pre-Adsorbed Secondary Antibody
Donkey Polyclonal, Texas Red®
Catalog # ASR2585**Specification****Anti-Chicken IgG (H&L) (Texas Red™ Conjugated) Pre-Adsorbed Secondary Antibody - Product Information**

Description	Anti-CHICKEN IgG (H&L) (DONKEY) Antibody Texas Red™ Conjugated (Min X Bv Gt GP Ham Hs Hu Ms Rb Rt & Sh Serum Proteins)
Host	Donkey
Conjugate	Texas Red®
FP Value	3.2 moles Texas Red® per mole of IgG
Target Species	Chicken
Reactivity	Chicken
Clonality	Polyclonal
Application	IF
Application Note	FLISA 1:10,000-1:50,000;IF Microscopy 1:1,000-1:5,000
Physical State	Lyophilized
Host Isotype	IgG
Target Isotype	IgG (H&L)
Buffer	0.02 M Potassium Phosphate, 0.15 M Sodium Chloride, pH 7.2
Immunogen	Chicken IgG whole molecule
Reconstitution Volume	1.0 mL
Reconstitution Buffer	Restore with deionized water (or equivalent)
Stabilizer	10 mg/mL Bovine Serum Albumin (BSA) - Immunoglobulin and Protease free
Preservative	0.01% (w/v) Sodium Azide

Anti-Chicken IgG (H&L) (Texas Red™ Conjugated) Pre-Adsorbed Secondary Antibody - Additional Information**Shipping Condition**

Ambient

Purity

This product was prepared from monospecific antiserum by immunoaffinity chromatography using Chicken IgG coupled to agarose beads followed by conjugation to fluorochrome and extensive dialysis against the buffer stated above. Assay by immunoelectrophoresis resulted in a single precipitin arc against anti-Donkey Serum, Chicken IgG and Chicken Serum. No reaction was observed against Bovine, Goat, Guinea Pig, Hamster, Horse, Human, Mouse, Rabbit, Rat and Sheep Serum Proteins. This antibody will react with heavy chains of Chicken IgG and with light chains of most Chicken immunoglobulins.

Storage Condition

Store vial at 4° C prior to restoration. For extended storage aliquot contents and freeze at -20° C

or below. Avoid cycles of freezing and thawing. Centrifuge product if not completely clear after standing at room temperature. This product is stable for several weeks at 4° C as an undiluted liquid. Dilute only prior to immediate use.

Precautions Note

This product is for research use only and is not intended for therapeutic or diagnostic applications.

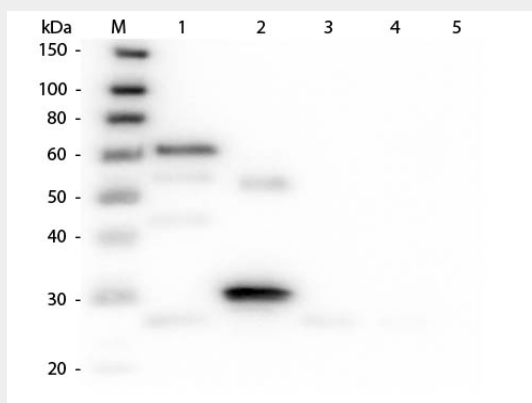
Anti-Chicken IgG (H&L) (Texas Red™ Conjugated) Pre-Adsorbed Secondary Antibody - Protein Information

Anti-Chicken IgG (H&L) (Texas Red™ Conjugated) Pre-Adsorbed Secondary Antibody - Protocols

Provided below are standard protocols that you may find useful for product applications.

- [Western Blot](#)
- [Blocking Peptides](#)
- [Dot Blot](#)
- [Immunohistochemistry](#)
- [Immunofluorescence](#)
- [Immunoprecipitation](#)
- [Flow Cytometry](#)
- [Cell Culture](#)

Anti-Chicken IgG (H&L) (Texas Red™ Conjugated) Pre-Adsorbed Secondary Antibody - Images



Western Blot of Anti-Chicken IgG (H&L) (DONKEY) Antibody (Min X Bv Gt GP Ham Hs Hu Ms Rb Rt & Sh Serum Proteins) . Lane M: 3 µl Molecular Ladder. Lane 1: Chicken IgG whole molecule . Lane 2: Chicken IgG F(c) Fragment . Lane 3: Chicken IgG F(ab) Fragment . Lane 4: Chicken IgM Whole Molecule . Lane 5: Chicken Serum . All samples were reduced. Load: 50 ng per lane. Block: MB-070 for 30 min at RT. Primary Antibody: Anti-Chicken IgG (H&L) (DONKEY) Antibody (Min X Bv Gt GP Ham Hs Hu Ms Rb Rt & Sh Serum Proteins) 1:3,000 for 60 min at RT. Secondary antibody: Anti-Donkey IgG (GOAT) Peroxidase Conjugated Antibody 1:40,000 in MB-070 for 30 min at RT. Predicted/Observed Size: 25 and 72 kDa for Chicken IgG and Serum, 25 kDa for F(c) and F(ab), 75 kDa for IgM. Chicken F(c) migrates slightly higher.

Anti-Chicken IgG (H&L) (Texas Red™ Conjugated) Pre-Adsorbed Secondary Antibody - Background

This product is designed for immunofluorescence microscopy, fluorescence based plate assays (FLISA) and fluorescent western blotting. This product is also suitable for multiplex analysis, including multicolor imaging, utilizing various commercial platforms.