

Anti-Human IgG (H&L) (Rhodamine Conjugated) Secondary Antibody
Mouse Polyclonal, Rhodamine (TRITC)
Catalog # ASR2693**Specification****Anti-Human IgG (H&L) (Rhodamine Conjugated) Secondary Antibody - Product Information**

Description	Anti-HUMAN IgG (H&L) (MOUSE) Antibody
Host	Rhodamine Conjugated
Conjugate	Mouse
FP Value	Rhodamine (TRITC)
	2.1 moles Rhodamine (TRITC) per mole of IgG
Target Species	Human
Reactivity	Human
Clonality	Polyclonal
Application	IF
Application Note	IF Microscopy 1:500-1:2,500
Physical State	Lyophilized
Host Isotype	IgG
Target Isotype	IgG (H&L)
Buffer	0.02 M Potassium Phosphate, 0.15 M Sodium Chloride, pH 7.2
	Human IgG whole molecule
Immunogen	1.0 mL
Reconstitution Volume	Restore with deionized water (or equivalent)
Reconstitution Buffer	10 mg/mL Bovine Serum Albumin (BSA) - Immunoglobulin and Protease free
Stabilizer	0.01% (w/v) Sodium Azide
Preservative	

Anti-Human IgG (H&L) (Rhodamine Conjugated) Secondary Antibody - Additional Information**Shipping Condition**

Ambient

Purity

Human IgG (H&L) Antibody Rhodamine Conjugated was prepared from monospecific polyclonal ascites by immunoaffinity chromatography using Human IgG coupled to agarose beads followed by solid phase adsorption(s) to remove any unwanted reactivities. Assay by immunoelectrophoresis resulted in a single precipitin arc against anti-Mouse Serum, Human IgG and Human Serum.

Storage Condition

Store vial at 4° C prior to restoration. For extended storage aliquot contents and freeze at -20° C or below. Avoid cycles of freezing and thawing. Centrifuge product if not completely clear after standing at room temperature. This product is stable for several weeks at 4° C as an undiluted liquid. Dilute only prior to immediate use.

Precautions Note

This product is for research use only and is not intended for therapeutic or diagnostic applications.

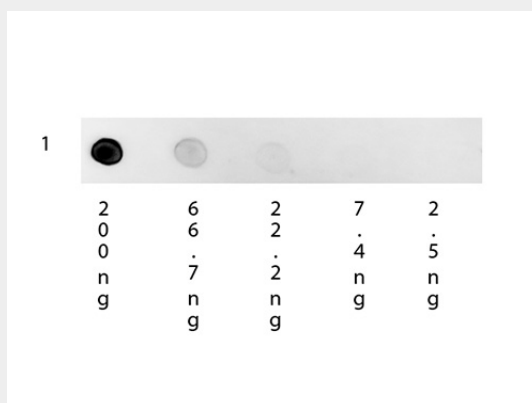
Anti-Human IgG (H&L) (Rhodamine Conjugated) Secondary Antibody - Protein Information

Anti-Human IgG (H&L) (Rhodamine Conjugated) Secondary Antibody - Protocols

Provided below are standard protocols that you may find useful for product applications.

- [Western Blot](#)
- [Blocking Peptides](#)
- [Dot Blot](#)
- [Immunohistochemistry](#)
- [Immunofluorescence](#)
- [Immunoprecipitation](#)
- [Flow Cytometry](#)
- [Cell Culture](#)

Anti-Human IgG (H&L) (Rhodamine Conjugated) Secondary Antibody - Images



Dot Blot of Mouse Anti-Human IgG Rhodamine Conjugated Secondary Antibody. Antigen: Human IgG. Load: 3-fold serial dilution starting at 200 ng. Primary antibody: None. Secondary antibody: Rhodamine mouse secondary antibody at 1:1000 for 1H at RT. Block: MB-070 for 1 H at RT.