

**Anti-Mouse IgG2b (Texas Red™ Conjugated) Pre-adsorbed Secondary Antibody**  
**Goat Polyclonal, Texas Red®**  
**Catalog # ASR2733****Specification****Anti-Mouse IgG2b (Texas Red™ Conjugated) Pre-adsorbed Secondary Antibody - Product Information**

Description	<b>Anti-MOUSE IgG2b (Gamma 2b chain) (GOAT) Antibody Texas Red™ Conjugated (Min Cross Bv, Hu, and Rb Serum Proteins) Goat</b>
Host	<b>Texas Red®</b>
Conjugate	<b>2.1 moles Texas Red® per mole of IgG</b>
FP Value	<b>Mouse</b>
Target Species	<b>Mouse</b>
Reactivity	<b>Polyclonal</b>
Clonality	<b>,1,3,15,</b>
Application	<b>FLISA 1:10,000-1:50,000;IF Microscopy</b>
Application Note	<b>1:1,000-1:5,000;Western Blot</b>
	<b>1:4,000-1:20,000;Immunochemistry</b>
	<b>1:1,000-1:5,000</b>
Physical State	<b>Lyophilized</b>
Host Isotype	<b>IgG</b>
Target Isotype	<b>IgG2b</b>
Buffer	<b>0.02 M Potassium Phosphate, 0.15 M Sodium Chloride, pH 7.2</b>
Immunogen	<b>Mouse IgG2b heavy chain</b>
Reconstitution Buffer	<b>Restore with deionized water (or equivalent)</b>
Stabilizer	<b>10 mg/mL Bovine Serum Albumin (BSA) - Immunoglobulin and Protease free</b>
Preservative	<b>0.01% (w/v) Sodium Azide</b>

**Anti-Mouse IgG2b (Texas Red™ Conjugated) Pre-adsorbed Secondary Antibody - Additional Information****Shipping Condition**

Ambient

**Purity**

Anti-MOUSE IgG2b (Gamma 2b chain) Antibody was prepared from monospecific antiserum by immunoaffinity chromatography using antigens coupled to agarose beads followed by solid phase adsorption(s) to remove any unwanted reactivities. Assay by immunoelectrophoresis resulted in a single precipitin arc against anti-Goat Serum, Mouse Serum and Mouse IgG2b. No reaction was observed against Bovine, Human, and Rabbit Serum Proteins. Specificity was confirmed by ELISA at less than 1% of target signal.

**Storage Condition**

Store vial at 4° C prior to restoration. For extended storage aliquot contents and freeze at -20° C or below. Avoid cycles of freezing and thawing. Centrifuge product if not completely clear after

standing at room temperature. This product is stable for several weeks at 4° C as an undiluted liquid. Dilute only prior to immediate use.

#### **Precautions Note**

This product is for research use only and is not intended for therapeutic or diagnostic applications.

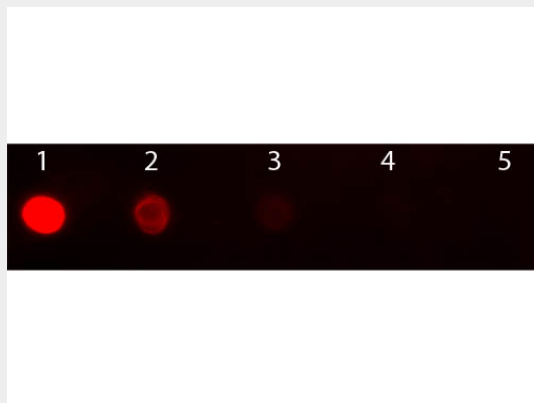
#### **Anti-Mouse IgG2b (Texas Red™ Conjugated) Pre-adsorbed Secondary Antibody - Protein Information**

#### **Anti-Mouse IgG2b (Texas Red™ Conjugated) Pre-adsorbed Secondary Antibody - Protocols**

Provided below are standard protocols that you may find useful for product applications.

- [Western Blot](#)
- [Blocking Peptides](#)
- [Dot Blot](#)
- [Immunohistochemistry](#)
- [Immunofluorescence](#)
- [Immunoprecipitation](#)
- [Flow Cytometry](#)
- [Cell Culture](#)

#### **Anti-Mouse IgG2b (Texas Red™ Conjugated) Pre-adsorbed Secondary Antibody - Images**



Dot Blot of Goat anti-Mouse IgG2b Antibody Texas Red™ Conjugated Pre-adsorbed. Antigen: Mouse IgG2b. Load: Lane 1 - 200 ng Lane 2 - 66.7 ng Lane 3 - 22.2 ng Lane 4 - 7.41 ng Lane 5 - 2.47 ng. Primary antibody: n/a. Secondary antibody: Goat anti-Mouse IgG2b Antibody Texas Red™ Conjugated Pre-adsorbed at 1:1,000 for 1 HR at RT. Block: MB-070 for 1 HR at RT.

#### **Anti-Mouse IgG2b (Texas Red™ Conjugated) Pre-adsorbed Secondary Antibody - Background**

Mouse IgG2b secondary antibody is available in a variety of formats. This product is suitable for multiplex analysis, including multicolor imaging, utilizing various commercial platforms.