

**Anti-Rabbit IgG (H&L) (Rhodamine Conjugated) Pre-Adsorbed Secondary Antibody  
Donkey Polyclonal, Rhodamine (TRITC)  
Catalog # ASR2785****Specification****Anti-Rabbit IgG (H&L) (Rhodamine Conjugated) Pre-Adsorbed Secondary Antibody -  
Product Information**

|                       |  |
|-----------------------|--|
| Description           | <b>Anti-RABBIT IgG (H&amp;L) (DONKEY) Antibody<br/>Rhodamine Conjugated (Min X Bv Ch Gt GP<br/>Ham Hs Hu Ms Rt &amp; Sh Serum Proteins)<br/>Donkey<br/>Rhodamine (TRITC)<br/>3.6 moles Rhodamine (TRITC) per mole of<br/>IgG<br/>Rabbit<br/>Polyclonal<br/>IF, FC<br/>FLISA 1:10,000-1:50,000;IF Microscopy<br/>1:1,000-1:5,000;FlowCytometry<br/>1:500-1:2,500<br/>Lyophilized<br/>IgG<br/>IgG (H&amp;L)<br/>0.02 M Potassium Phosphate, 0.15 M<br/>Sodium Chloride, pH 7.2<br/>Rabbit IgG whole molecule<br/>1.0 mL<br/>Restore with deionized water (or<br/>equivalent)<br/>10 mg/mL Bovine Serum Albumin (BSA) -<br/>Immunoglobulin and Protease free<br/>0.01% (w/v) Sodium Azide</b> |
| Host                  |  |
| Conjugate             |  |
| FP Value              |  |
| Target Species        |  |
| Clonality             |  |
| Application           |  |
| Application Note      |  |
| Physical State        |  |
| Host Isotype          |  |
| Target Isotype        |  |
| Buffer                |  |
| Immunogen             |  |
| Reconstitution Volume |  |
| Reconstitution Buffer |  |
| Stabilizer            |  |
| Preservative          |  |

**Anti-Rabbit IgG (H&L) (Rhodamine Conjugated) Pre-Adsorbed Secondary Antibody -  
Additional Information****Shipping Condition**

Ambient

**Purity**

This product was prepared from monospecific antiserum by immunoaffinity chromatography using Rabbit IgG coupled to agarose beads followed by solid phase adsorption(s) to remove any unwanted reactivities. Assay by immunoelectrophoresis resulted in a single precipitin arc against anti-Donkey Serum, Rabbit IgG and Rabbit Serum. No reaction was observed against Bovine, Chicken, Goat, Guinea Pig, Horse, Human, Mouse, Rat and Sheep Serum Proteins.

**Storage Condition**

Store vial at 4° C prior to restoration. For extended storage aliquot contents and freeze at -20° C or below. Avoid cycles of freezing and thawing. Centrifuge product if not completely clear after standing at room temperature. This product is stable for several weeks at 4° C as an undiluted

liquid. Dilute only prior to immediate use.

#### Precautions Note

This product is for research use only and is not intended for therapeutic or diagnostic applications.

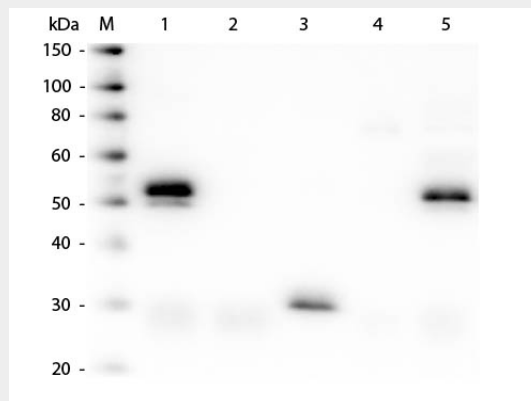
#### Anti-Rabbit IgG (H&L) (Rhodamine Conjugated) Pre-Adsorbed Secondary Antibody - Protein Information

#### Anti-Rabbit IgG (H&L) (Rhodamine Conjugated) Pre-Adsorbed Secondary Antibody - Protocols

Provided below are standard protocols that you may find useful for product applications.

- [Western Blot](#)
- [Blocking Peptides](#)
- [Dot Blot](#)
- [Immunohistochemistry](#)
- [Immunofluorescence](#)
- [Immunoprecipitation](#)
- [Flow Cytometry](#)
- [Cell Culture](#)

#### Anti-Rabbit IgG (H&L) (Rhodamine Conjugated) Pre-Adsorbed Secondary Antibody - Images



Western Blot of Anti-Rabbit IgG (H&L) (DONKEY) Antibody (Min X Bv Ch Gt GP Ham Hs Hu Ms Rt & Sh Serum Proteins) . Lane M: 3  $\mu$ l Molecular Ladder. Lane 1: Rabbit IgG whole molecule . Lane 2: Rabbit IgG F(ab) Fragment . Lane 3: Rabbit IgG F(c) Fragment . Lane 4: Rabbit IgM Whole Molecule . Lane 5: Normal Rabbit Serum . All samples were reduced. Load: 50 ng of IgG, F(ab), F(c) and Serum, 25 ng of IgM. Block: MB-070 for 30 min at RT. Primary Antibody: Anti-Rabbit IgG (H&L) (DONKEY) Antibody (Min X Bv Ch Gt GP Ham Hs Hu Ms Rt & Sh Serum Proteins) 1:7,500 for 60 min at RT. Secondary antibody: Anti-Donkey IgG (GOAT) Peroxidase Conjugated Antibody 1:40,000 in MB-070 for 30 min at RT. Predicted/Observed Size: 25 and 50 kDa for Rabbit IgG and Serum, 25 kDa for F(c) and F(ab), 70 and 23 kDa for IgM. Rabbit F(c) migrates slightly higher.

#### Anti-Rabbit IgG (H&L) (Rhodamine Conjugated) Pre-Adsorbed Secondary Antibody - Background

This product is designed for immunofluorescence microscopy, fluorescence based plate assays

(FLISA) and fluorescent western blotting. This product is also suitable for multiplex analysis, including multicolor imaging, utilizing various commercial platforms.