

Anti-Rat IgG (H&L) (Fluorescein Conjugated) Pre-Adsorbed Secondary Antibody
Goat Polyclonal, Fluorescein (FITC)
Catalog # ASR2791**Specification****Anti-Rat IgG (H&L) (Fluorescein Conjugated) Pre-Adsorbed Secondary Antibody - Product Information**

Description	Anti-RAT IgG (H&L) (GOAT) Antibody Fluorescein Conjugated (Min X Bv Ch Gt GP Ham Hs Hu Ms Rb & Sh Serum Proteins) Goat Fluorescein (FITC) 3.1 moles Fluorescein (FITC) per mole of IgG Rat Polyclonal IF, FC FLISA 1:10,000-1:50,000;IF Microscopy 1:1,000-1:5,000;FlowCytometry 1:500-1:2,500 Lyophilized
Host	Goat
Conjugate	Fluorescein (FITC)
FP Value	3.1 moles Fluorescein (FITC) per mole of IgG
Target Species	Rat
Clonality	Polyclonal
Application	IF, FC
Application Note	FLISA 1:10,000-1:50,000;IF Microscopy 1:1,000-1:5,000;FlowCytometry 1:500-1:2,500
Physical State	Lyophilized
Host Isotype	IgG
Target Isotype	IgG (H&L)
Buffer	0.02 M Potassium Phosphate, 0.15 M Sodium Chloride, pH 7.2
Immunogen	Rat IgG whole molecule
Reconstitution Volume	1.0 mL
Reconstitution Buffer	Restore with deionized water (or equivalent)
Stabilizer	10 mg/mL Bovine Serum Albumin (BSA) - Immunoglobulin and Protease free
Preservative	0.01% (w/v) Sodium Azide

**Anti-Rat IgG (H&L) (Fluorescein Conjugated) Pre-Adsorbed Secondary Antibody -
Additional Information****Shipping Condition**

Ambient

Purity

Rat IgG (H&L) Antibody Fluorescein Conjugated (Pre-Adsorbed) was prepared from monospecific antiserum by immunoaffinity chromatography using Rat IgG coupled to agarose beads followed by solid phase adsorption(s) to remove any unwanted reactivities. Assay by immunoelectrophoresis resulted in a single precipitin arc against anti-Fluorescein, anti-Goat Serum, Rat IgG, Rat IgG F(ab')₂ F(c) and Rat Serum. No reaction was observed against Rat IgG F(ab')₂ F(c) or Bovine, Chicken, Goat, Guinea Pig, Hamster, Horse, Human, Mouse, Rabbit and Sheep Serum Proteins. Specificity was confirmed by ELISA at less than 1% cross reactivity against other mouse or human heavy or light chain isotypes.

Storage Condition

Store vial at 4° C prior to restoration. For extended storage aliquot contents and freeze at -20° C or below. Avoid cycles of freezing and thawing. Centrifuge product if not completely clear after standing at room temperature. This product is stable for several weeks at 4° C as an undiluted liquid. Dilute only prior to immediate use.

Precautions Note

This product is for research use only and is not intended for therapeutic or diagnostic applications.

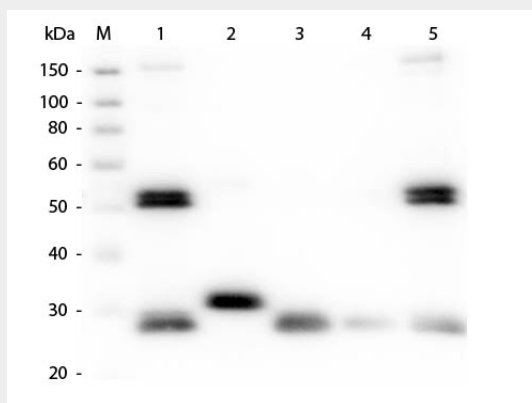
Anti-Rat IgG (H&L) (Fluorescein Conjugated) Pre-Adsorbed Secondary Antibody - Protein Information

Anti-Rat IgG (H&L) (Fluorescein Conjugated) Pre-Adsorbed Secondary Antibody - Protocols

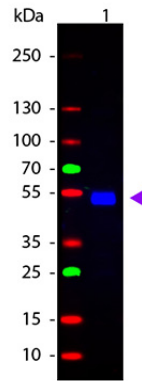
Provided below are standard protocols that you may find useful for product applications.

- [Western Blot](#)
- [Blocking Peptides](#)
- [Dot Blot](#)
- [Immunohistochemistry](#)
- [Immunofluorescence](#)
- [Immunoprecipitation](#)
- [Flow Cytometry](#)
- [Cell Culture](#)

Anti-Rat IgG (H&L) (Fluorescein Conjugated) Pre-Adsorbed Secondary Antibody - Images



Western Blot of Anti-Rat IgG (H&L) (GOAT) Antibody (Min X Bv Ch Gt GP Ham Hs Hu Ms Rb & Sh Serum Proteins) . Lane M: 3 μ l Molecular Ladder. Lane 1: Rat IgG whole molecule . Lane 2: Rat IgG F(c) Fragment . Lane 3: Rat IgG F(ab) Fragment . Lane 4: Rat IgM Whole Molecule . Lane 5: Rat Serum . All samples were reduced. Load: 50 ng per lane. Block: MB-070 for 30 min at RT. Primary Antibody: Anti-Rat IgG (H&L) (GOAT) Antibody (Min X Bv Ch Gt GP Ham Hs Hu Ms Rb & Sh Serum Proteins) 1:1,000 for 60 min at RT. Secondary Antibody: Anti-Goat IgG (DONKEY) Peroxidase Conjugated Antibody 1:40,000 in MB-070 for 30 min at RT. Predicted/Observed Size: 25 and 55 kDa for Rat IgG and Serum, 25 kDa for F(c) and F(ab), 78 and 25 kDa for IgM. Rat F(c) migrates slightly higher.



Western Blot of Goat anti-Rat IgG Fluorescein Conjugated Antibody. Lane 1: Rat IgG. Lane 2: None. Load: 50 ng per lane. Primary antibody: None. Secondary antibody: Fluorescein goat secondary antibody at 1:1,000 for 60 min at RT. Block: MB-070 for 30 min at RT. Predicted/Observed size: 28 & 55 kDa, 55 kDa for Rat IgG. Other band(s): None.

Anti-Rat IgG (H&L) (Fluorescein Conjugated) Pre-Adsorbed Secondary Antibody - Background

Rat IgG (H&L) Antibody Fluorescein Conjugated (Pre-Adsorbed) is designed for immunofluorescence microscopy, fluorescence based plate assays (FLISA) and fluorescent western blotting. This product is also suitable for multiplex analysis, including multicolor imaging, utilizing various commercial platforms.