

**F(ab')<sub>2</sub> Anti-Rat IgG (H&L) Pre-Adsorbed Secondary Antibody**  
**Goat Polyclonal, Unconjugated**  
**Catalog # ASR2818****Specification**

---

**F(ab')<sub>2</sub> Anti-Rat IgG (H&L) Pre-Adsorbed Secondary Antibody - Product Information**

Description	<b>F(ab')<sub>2</sub> Anti-RAT IgG (H&amp;L) (GOAT) Antibody (Min X MOUSE Serum Proteins)</b>
Host	<b>Goat</b>
Conjugate	<b>Unconjugated</b>
Target Species	<b>Rat</b>
Reactivity	<b>Rat</b>
Clonality	<b>Polyclonal</b>
Application	<b>WB, E, IC</b>
Application Note	<b>ELISA 1:20,000-1:100,000;Western Blot 1:2,000-1:10,000;Immunochemistry 1:1,000-1:5,000</b>
Physical State	<b>Liquid (sterile filtered)</b>
Host Isotype	<b>IgG F(ab')<sub>2</sub></b>
Target Isotype	<b>IgG (H&amp;L)</b>
Buffer	<b>0.02 M Potassium Phosphate, 0.15 M Sodium Chloride, pH 7.2</b>
Immunogen	<b>Anti-Rat IgG was produced by repeated immunization with Rat IgG whole molecule in goat.</b>
Stabilizer	<b>None</b>
Preservative	<b>0.01% (w/v) Sodium Azide</b>

**F(ab')<sub>2</sub> Anti-Rat IgG (H&L) Pre-Adsorbed Secondary Antibody - Additional Information****Shipping Condition**

Wet Ice

**Purity**

This product was prepared from monospecific antiserum by immunoaffinity chromatography using Rat IgG coupled to agarose beads followed by solid phase adsorption(s) to remove any unwanted reactivities, pepsin digestion and chromatographic separation. Assay by immunoelectrophoresis resulted in a single precipitin arc against anti-Goat Serum, Rat IgG and Rat Serum. No reaction was observed against anti-Pepsin, anti-Goat IgG F(c) or Mouse Serum Proteins.

**Storage Condition**

Store vial at 4° C prior to opening. This product is stable for several weeks at 4° C as an undiluted liquid. Dilute only prior to immediate use. For extended storage aliquot contents and freeze at -20° C or below. Avoid cycles of freezing and thawing.

**Precautions Note**

This product is for research use only and is not intended for therapeutic or diagnostic applications.

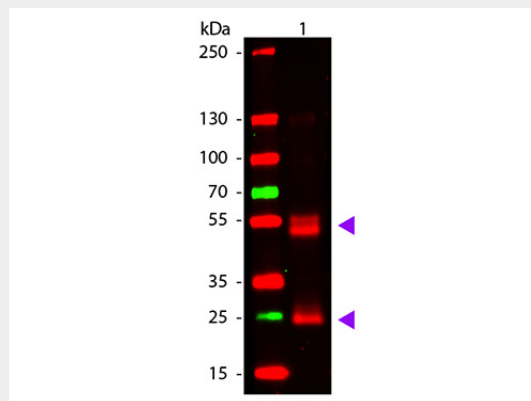
**F(ab')<sub>2</sub> Anti-Rat IgG (H&L) Pre-Adsorbed Secondary Antibody - Protein Information**

## F(ab')<sub>2</sub> Anti-Rat IgG (H&L) Pre-Adsorbed Secondary Antibody - Protocols

Provided below are standard protocols that you may find useful for product applications.

- [Western Blot](#)
- [Blocking Peptides](#)
- [Dot Blot](#)
- [Immunohistochemistry](#)
- [Immunofluorescence](#)
- [Immunoprecipitation](#)
- [Flow Cytometry](#)
- [Cell Culture](#)

## F(ab')<sub>2</sub> Anti-Rat IgG (H&L) Pre-Adsorbed Secondary Antibody - Images



Western Blot of Goat anti-Rat IgG Antibody. Lane 1: Rat IgG. Lane 2: None. Load: 50 ng per lane. Primary antibody: Rat antibody at 1,000 overnight at 4°C. Secondary antibody: DyLight™ 649 goat secondary antibody at 1:20,000 for 30 min at RT. Block: MB-070 for 30 min at RT. Predicted/Observed size: 28 & 55 kDa, 28 & 55 kDa for Rat IgG. Other band(s): None.

## F(ab')<sub>2</sub> Anti-Rat IgG (H&L) Pre-Adsorbed Secondary Antibody - Background

F(ab')<sub>2</sub> Rat IgG (H&L) Antibody (Pre-Adsorbed) was generated by enzymatic cleavage and subsequent separation from the Fc fragment. Because of their smaller size, F(ab)<sub>2</sub> fragments offer several advantages over intact antibodies for use in certain immunochemical techniques and experimental applications. F(ab)<sub>2</sub> fragments penetrate into tissue samples and show better antigen recognition and signal generation in IHC. F(ab)<sub>2</sub> fragments lack the Fc region and therefore do not bind Fc receptors which effectively lowers background staining. F(ab')<sub>2</sub> Rat IgG (H&L) Antibody (Pre-Adsorbed) is ideal for investigators who routinely perform flow cytometry, immunohistochemistry or IHC and other immunoassays.