

**Anti-Chicken IgG F(ab')<sub>2</sub> (Alkaline Phosphatase Conjugated) Secondary Antibody**  
**Rabbit Polyclonal, Alkaline Phosphatase (Calf Intestine)**  
**Catalog # ASR2841****Specification****Anti-Chicken IgG F(ab')<sub>2</sub> (Alkaline Phosphatase Conjugated) Secondary Antibody - Product Information**

Description	<b>Anti-CHICKEN IgG F(ab')<sub>2</sub> (RABBIT) Antibody Alkaline Phosphatase Conjugated</b>
Host	<b>Rabbit</b>
Conjugate	<b>Alkaline Phosphatase (Calf Intestine)</b>
Target Species	<b>Chicken</b>
Clonality	<b>Polyclonal</b>
Application	<b>WB, E, IC</b>
Application Note	<b>ELISA 1:3,500;Western Blot 1:500-1:2,500;Immunochemistry 1:200-1:1,000</b>
Physical State	<b>Liquid (sterile filtered)</b>
Host Isotype	<b>IgG</b>
Target Isotype	<b>IgG F(ab')<sub>2</sub></b>
Buffer	<b>0.05 M Tris Chloride, 0.15M Sodium Chloride, 0.001M Magnesium Chloride, 0.0001M Zinc Chloride, 50% (v/v) Glycerol; pH 8.0</b>
Immunogen	<b>Chicken IgG F(ab')<sub>2</sub> fragment</b>
Stabilizer	<b>10 mg/mL Bovine Serum Albumin (BSA) - Immunoglobulin and Protease free</b>
Preservative	<b>0.01% (w/v) Sodium Azide</b>

**Anti-Chicken IgG F(ab')<sub>2</sub> (Alkaline Phosphatase Conjugated) Secondary Antibody - Additional Information****Shipping Condition**

Wet Ice

**Purity**

This product was prepared from monospecific antiserum by immunoaffinity chromatography using Chicken IgG coupled to agarose beads followed by solid phase adsorption(s) to remove any unwanted reactivities. Assay by immunoelectrophoresis resulted in a single precipitin arc against anti-Alkaline Phosphatase (calf intestine), anti-Rabbit Serum, Chicken IgG, Chicken IgG F(ab')<sub>2</sub> and Chicken Serum. No reaction was observed against Chicken IgG F(c).

**Storage Condition**

Store vial at 4° C before opening. DO NOT FREEZE. This product is stable at 4° C as an undiluted liquid. Dilute only prior to immediate use. Freezing alkaline phosphatase conjugates will result in a substantial loss of enzymatic activity.

**Precautions Note**

This product is for research use only and is not intended for therapeutic or diagnostic applications.

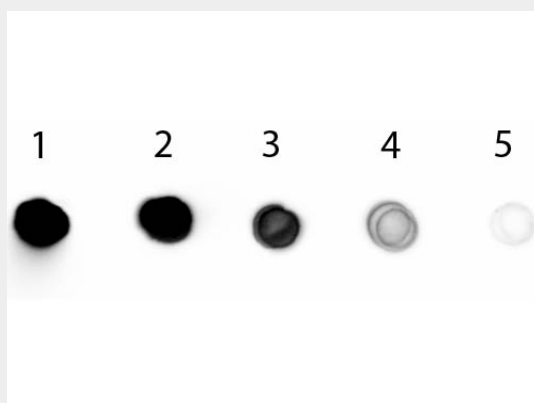
## Anti-Chicken IgG F(ab')<sub>2</sub> (Alkaline Phosphatase Conjugated) Secondary Antibody - Protein Information

## Anti-Chicken IgG F(ab')<sub>2</sub> (Alkaline Phosphatase Conjugated) Secondary Antibody - Protocols

Provided below are standard protocols that you may find useful for product applications.

- [Western Blot](#)
- [Blocking Peptides](#)
- [Dot Blot](#)
- [Immunohistochemistry](#)
- [Immunofluorescence](#)
- [Immunoprecipitation](#)
- [Flow Cytometry](#)
- [Cell Culture](#)

## Anti-Chicken IgG F(ab')<sub>2</sub> (Alkaline Phosphatase Conjugated) Secondary Antibody - Images



Dot Blot of Rabbit anti-Chicken IgG F(ab)<sub>2</sub> Antibody Alkaline Phosphatase Conjugated. Antigen: Chicken IgG. Load: Lane 1 - 200 ng Lane 2 - 66.7 ng Lane 3 - 22.2 ng Lane 4 - 7.41 ng Lane 5 - 2.47 ng. Primary antibody: n/a. Secondary antibody: Rabbit anti-Chicken IgG F(ab)<sub>2</sub> Antibody Alkaline Phosphatase Conjugated at 1:1,000 for 1 HR at RT. Block: MB-070 for 1 HR at RT.

## Anti-Chicken IgG F(ab')<sub>2</sub> (Alkaline Phosphatase Conjugated) Secondary Antibody - Background

Anti-Chicken IgG Antibody detects specifically Chicken IgG F(ab')<sub>2</sub>. Anti-Chicken IgG is ideal for investigators who routinely perform ELISA, Sandwich ELISA, titration assays, western-blot, immunoprecipitation and more generally immunoassays. Anti-Chicken IgG F(ab')<sub>2</sub> Antibody is ideal for investigators in Cancer, Immunology, and Microbiology research.