

Anti-Rat IgM (mu chain) (Biotin Conjugated) Secondary Antibody
Rabbit Polyclonal, Biotin
Catalog # ASR2858**Specification****Anti-Rat IgM (mu chain) (Biotin Conjugated) Secondary Antibody - Product Information**

Description	Anti-RAT IgM (mu chain) (RABBIT) Antibody
Host	Biotin Conjugated
Conjugate	Rabbit
Target Species	Biotin
Clonality	Rat
Application	Polyclonal
Application Note	,1,10,15, ELISA 1:20,000-1:100,000;Western Blot 1:2,000-1:10,000;Immunochemistry 1:1,000-1:5,000
Physical State	Lyophilized
Host Isotype	IgG
Target Isotype	IgM μ chain
Buffer	0.02 M Potassium Phosphate, 0.15 M Sodium Chloride, pH 7.2
Immunogen	Rat IgM mu heavy chain
Reconstitution Volume	1.0 mL
Reconstitution Buffer	Restore with deionized water (or equivalent)
Stabilizer	10 mg/mL Bovine Serum Albumin (BSA) - Immunoglobulin and Protease free
Preservative	0.01% (w/v) Sodium Azide

Anti-Rat IgM (mu chain) (Biotin Conjugated) Secondary Antibody - Additional Information**Shipping Condition**

Ambient

Purity

Anti-RAT IgM (mu chain) Antibody was prepared from monospecific antiserum by immunoaffinity chromatography using Rat IgM coupled to agarose beads followed by solid phase adsorption(s) to remove any unwanted reactivities. Purified Anti-RAT IgM was Biotin Conjugated. Assay by immunoelectrophoresis resulted in a single precipitin arc against anti-biotin, anti-Rabbit Serum, Rat IgM and Rat Serum. No reaction was observed against Rat IgA or Rat IgG.

Storage Condition

Store vial at 4° C prior to restoration. For extended storage aliquot contents and freeze at -20° C or below. Avoid cycles of freezing and thawing. Centrifuge product if not completely clear after standing at room temperature. This product is stable for several weeks at 4° C as an undiluted liquid. Dilute only prior to immediate use.

Precautions Note

This product is for research use only and is not intended for therapeutic or diagnostic applications.

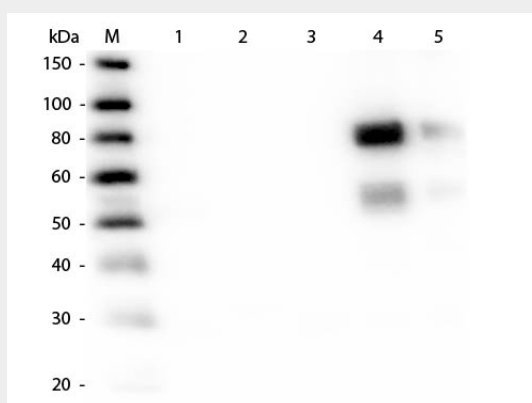
Anti-Rat IgM (mu chain) (Biotin Conjugated) Secondary Antibody - Protein Information

Anti-Rat IgM (mu chain) (Biotin Conjugated) Secondary Antibody - Protocols

Provided below are standard protocols that you may find useful for product applications.

- [Western Blot](#)
- [Blocking Peptides](#)
- [Dot Blot](#)
- [Immunohistochemistry](#)
- [Immunofluorescence](#)
- [Immunoprecipitation](#)
- [Flow Cytometry](#)
- [Cell Culture](#)

Anti-Rat IgM (mu chain) (Biotin Conjugated) Secondary Antibody - Images



Western Blot of Anti-Rat IgM (mu chain) (RABBIT) Antibody . Lane M: 3 μ l Molecular Ladder. Lane 1: Rat IgG whole molecule . Lane 2: Rat IgG F(c) Fragment . Lane 3: Rat IgG F(ab) Fragment . Lane 4: Rat IgM Whole Molecule . Lane 5: Rat Serum . All samples were reduced. Load: 50 ng per lane. Block: MB-070 for 30 min at RT. Primary Antibody: Anti-Rat IgM (mu chain) (RABBIT) Antibody 1:2,000 for 60 min at RT. Secondary Antibody: Anti-Rabbit IgG (GOAT) Peroxidase Conjugated Antibody 1:40,000 in MB-070 for 30 min at RT. Predicted/Observed Size: 25 and 55 kDa for Rat IgG and Serum, 25 kDa for F(c) and F(ab), 78 and 25 kDa for IgM. Rat F(c) migrates slightly higher.

Anti-Rat IgM (mu chain) (Biotin Conjugated) Secondary Antibody - Background

Rat IgM antibody recognizes the mu chain of the Rat IgM. Assay by immunoelectrophoresis resulted in a single precipitin arc against anti-Biotin, anti-Rabbit Serum, Rat IgM and Rat Serum. No reaction was observed against Rat IgA or Rat IgG. ELISA was used to confirm specificity at less than 1% cross reactivity against other rat heavy or light chain isotypes. Anti-Rat IgM antibody is ideal with investigators involved in serum component protein research.