

**F(ab')<sub>2</sub> Anti-Human IgG F(c) (Biotin Conjugated) Pre-Adsorbed Secondary Antibody**  
**Goat Polyclonal, Biotin**  
**Catalog # ASR2865****Specification****F(ab')<sub>2</sub> Anti-Human IgG F(c) (Biotin Conjugated) Pre-Adsorbed Secondary Antibody - Product Information**

Description	<b>F(ab')<sub>2</sub> Anti-HUMAN IgG F(c) (GOAT) Antibody Biotin Conjugated Min X Bv Hs Ms &amp; Rt Serum Proteins</b>
Host	<b>Goat</b>
Conjugate	<b>Biotin</b>
Target Species	<b>Human</b>
Clonality	<b>Polyclonal</b>
Application	<b>WB, E, IC</b>
Application Note	<b>ELISA 1:20,000-1:100,000;Western Blot 1:2,000-1:10,000;Immunochemistry 1:1,000-1:5,000</b>
Physical State	<b>Lyophilized</b>
Host Isotype	<b>IgG F(ab')<sub>2</sub></b>
Target Isotype	<b>IgG F(c)</b>
Buffer	<b>0.02 M Potassium Phosphate, 0.15 M Sodium Chloride, pH 7.2</b>
Immunogen	<b>Human IgG F(c) fragment</b>
Reconstitution Volume	<b>1.0 mL</b>
Reconstitution Buffer	<b>Restore with deionized water (or equivalent)</b>
Stabilizer	<b>10 mg/mL Bovine Serum Albumin (BSA) - Immunoglobulin and Protease free</b>
Preservative	<b>0.01% (w/v) Sodium Azide</b>

**F(ab')<sub>2</sub> Anti-Human IgG F(c) (Biotin Conjugated) Pre-Adsorbed Secondary Antibody - Additional Information****Shipping Condition**

Ambient

**Purity**

This product was prepared from monospecific antiserum by immunoaffinity chromatography using Human IgG coupled to agarose beads followed by solid phase adsorption(s) to remove any unwanted reactivities, pepsin digestion and chromatographic separation. Assay by immunoelectrophoresis resulted in a single precipitin arc against anti-Biotin, anti-Goat Serum, Human IgG, Human IgG F(c) and Human Serum. No reaction was observed against anti-Pepsin, anti-Goat IgG F(c), Human IgG F(ab')<sub>2</sub> or Bovine, Horse, Mouse and Rat Serum Proteins.

**Storage Condition**

Store vial at 4° C prior to restoration. For extended storage aliquot contents and freeze at -20° C or below. Avoid cycles of freezing and thawing. Centrifuge product if not completely clear after standing at room temperature. This product is stable for several weeks at 4° C as an undiluted liquid. Dilute only prior to immediate use.

### Precautions Note

This product is for research use only and is not intended for therapeutic or diagnostic applications.

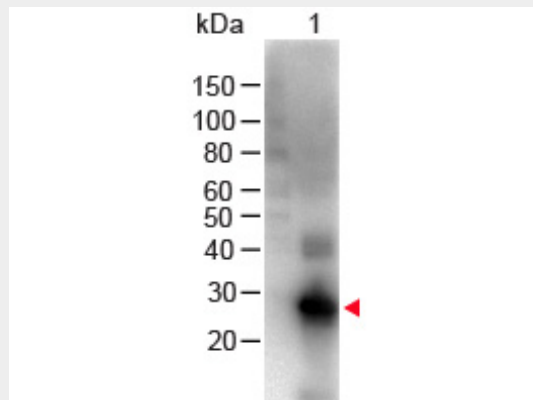
### F(ab')<sub>2</sub> Anti-Human IgG F(c) (Biotin Conjugated) Pre-Adsorbed Secondary Antibody - Protein Information

### F(ab')<sub>2</sub> Anti-Human IgG F(c) (Biotin Conjugated) Pre-Adsorbed Secondary Antibody - Protocols

Provided below are standard protocols that you may find useful for product applications.

- [Western Blot](#)
- [Blocking Peptides](#)
- [Dot Blot](#)
- [Immunohistochemistry](#)
- [Immunofluorescence](#)
- [Immunoprecipitation](#)
- [Flow Cytometry](#)
- [Cell Culture](#)

### F(ab')<sub>2</sub> Anti-Human IgG F(c) (Biotin Conjugated) Pre-Adsorbed Secondary Antibody - Images



Western Blot of Goat anti-F(ab')<sub>2</sub> Human IgG F(c) Antibody Biotin Conjugated (Pre-Adsorbed)  
Lane 1: Human Fc Load: 100 ng per lane Primary Antibody: F(ab')<sub>2</sub> Human IgG F(c) Antibody Biotin Conjugated (Pre-Adsorbed) at 1:1000 for 60 min RT Secondary antibody: HRP Conjugated Streptavidin at 1:40,000 for 30 min at RT Block: MB-070 for 30 min at RT Predicted/Observed Size: 28 kDa/28 kDa

### F(ab')<sub>2</sub> Anti-Human IgG F(c) (Biotin Conjugated) Pre-Adsorbed Secondary Antibody - Background

Suitable for immunomicroscopy and flow cytometry or FACS analysis as well as other antibody based fluorescent assays requiring lot-to-lot consistency.