

F(ab')₂ Anti-Rabbit IgG (H&L) (Phycoerythrin Conjugated) Secondary Antibody
Goat Polyclonal, R-Phycoerythrin (RPE)
Catalog # ASR2871**Specification****F(ab')₂ Anti-Rabbit IgG (H&L) (Phycoerythrin Conjugated) Secondary Antibody - Product Information**

| | |
|-----------------------|--|
| Description | F(ab')₂ Anti-RABBIT IgG [H&L] (GOAT) Antibody Phycoerythrin conjugated |
| Host | Goat |
| Conjugate | R-Phycoerythrin (RPE) |
| Target Species | Rabbit |
| Clonality | Polyclonal |
| Application | ,3,4, |
| Application Note | IF Microscopy 1:100-1:250;FlowCytometry 1:100-1:250;FLOW1:100-1:250 |
| Physical State | Lyophilized |
| Host Isotype | IgG F(ab')₂ |
| Target Isotype | IgG (H&L) |
| Buffer | 0.02 M Potassium Phosphate, 0.15 M Sodium Chloride, pH 7.2 |
| Immunogen | Rabbit IgG whole molecule |
| Reconstitution Volume | 1.0 mL |
| Reconstitution Buffer | Restore with deionized water (or equivalent) |
| Stabilizer | 10 mg/mL Bovine Serum Albumin (BSA) - Immunoglobulin and Protease free |
| Preservative | 0.01% (w/v) Sodium Azide |

F(ab')₂ Anti-Rabbit IgG (H&L) (Phycoerythrin Conjugated) Secondary Antibody - Additional Information**Shipping Condition**

Ambient

Purity

This product was prepared from monospecific antiserum by immunoaffinity chromatography using Rabbit IgG coupled to agarose beads followed by pepsin digestion and chromatographic separation. Coupling to R-PE was followed by size exclusion chromatography to purify conjugate from unreacted R-PE and antibody. Assay by immunoelectrophoresis resulted in a single precipitin arc against anti-Phycoerythrin, anti-Goat Serum, Rabbit IgG and Rabbit Serum. No reaction was observed against anti-Pepsin or anti-Goat IgG F(c).

Storage Condition

Store vial at 4° C prior to opening. Dilute only prior to immediate use. Do not freeze after reconstitution. Store reagent in the dark. This product is stable at 4° C as an undiluted liquid. Use subdued lighting during handling and incubation of cells prior to analysis.

Precautions Note

This product is for research use only and is not intended for therapeutic or diagnostic applications.

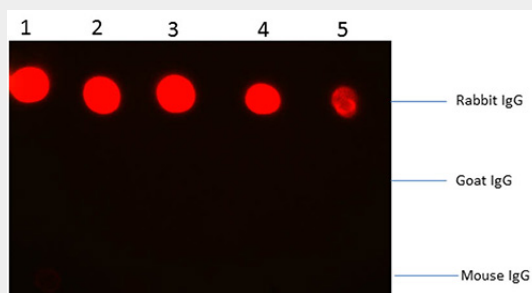
F(ab')₂ Anti-Rabbit IgG (H&L) (Phycoerythrin Conjugated) Secondary Antibody - Protein Information

F(ab')₂ Anti-Rabbit IgG (H&L) (Phycoerythrin Conjugated) Secondary Antibody - Protocols

Provided below are standard protocols that you may find useful for product applications.

- [Western Blot](#)
- [Blocking Peptides](#)
- [Dot Blot](#)
- [Immunohistochemistry](#)
- [Immunofluorescence](#)
- [Immunoprecipitation](#)
- [Flow Cytometry](#)
- [Cell Culture](#)

F(ab')₂ Anti-Rabbit IgG (H&L) (Phycoerythrin Conjugated) Secondary Antibody - Images



Dot Blot of F(ab)₂ Goat anti-Rabbit IgG Antibody Phycoerythrin Conjugated. Antigen: Row 1: Rabbit IgG Row 2: Goat IgG Row 3: Mouse IgG Load: Lane 1 - 200ng Lane 2 - 66.7ng Lane 3 - 22.2ng Lane 4 - 7.4ng Lane 5 - 2.5ng Primary antibody: N/A Secondary antibody: F(ab)₂ Goat anti-Rabbit IgG Antibody Phycoerythrin Conjugated at 1:1,000 for 60 min at RT. Block: MB-070 for 1 hour at RT