

Rabbit IgG F(c) Texas Red™
Catalog # ASR2902**Specification**

Rabbit IgG F(c) Texas Red™ - Product Information

Description	RABBIT IgG F(c) fragment Texas Red™ conjugated
Conjugate	Texas Red®
FP Value	0.14 moles Texas Red® per mole of Rabbit IgG F(c)
Physical State	Lyophilized
Host Isotype	IgG F(c)
Buffer	0.02 M Potassium Phosphate, 0.15 M Sodium Chloride, pH 7.2
Species of Origin	Rabbit
Reconstitution Volume	1.0 mL
Reconstitution Buffer	Restore with deionized water (or equivalent)
Stabilizer	10 mg/mL Bovine Serum Albumin (BSA) - Immunoglobulin and Protease free
Preservative	0.01% (w/v) Sodium Azide

Rabbit IgG F(c) Texas Red™ - Additional Information**Shipping Condition**

Ambient

Purity

This product was prepared from normal serum by delipidation, salt fractionation, and ion exchange chromatography followed by papain digestion and extensive dialysis against the buffer stated above. Assay by immunoelectrophoresis resulted in a single precipitin arc against anti-Rabbit IgG, anti-Rabbit IgG F(c) and anti-Rabbit Serum. No reaction was observed against anti-Rabbit IgG F(ab')₂ or anti-Papain.

Storage Condition

Store vial at 4° C prior to restoration. For extended storage aliquot contents and freeze at -20° C or below. Avoid cycles of freezing and thawing. Centrifuge product if not completely clear after standing at room temperature. This product is stable for several weeks at 4° C as an undiluted liquid. Dilute only prior to immediate use.

Precautions Note

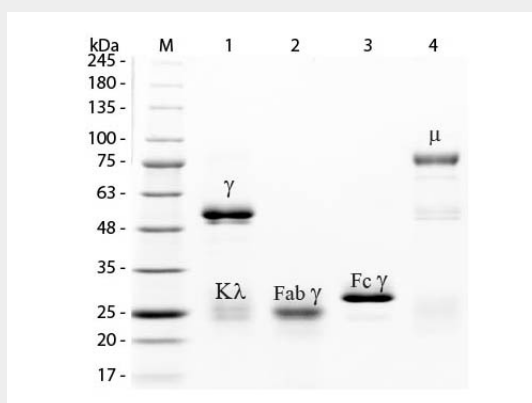
This product is for research use only and is not intended for therapeutic or diagnostic applications.

Rabbit IgG F(c) Texas Red™ - Protein Information**Rabbit IgG F(c) Texas Red™ - Protocols**

Provided below are standard protocols that you may find useful for product applications.

- [Western Blot](#)
- [Blocking Peptides](#)
- [Dot Blot](#)
- [Immunohistochemistry](#)
- [Immunofluorescence](#)
- [Immunoprecipitation](#)
- [Flow Cytometry](#)
- [Cell Culture](#)

Rabbit IgG F(c) Texas Red™ - Images



SDS-PAGE of Rabbit IgG F(c) Fragment Texas Red™ Conjugated . Lane M: 3 μ L Opal Prestained Marker . Lane 1: Reduced Rabbit IgG Whole Molecule . Lane 2: Reduced Rabbit IgG F(ab) Fragment . Lane 3: Reduced Rabbit IgG F(c) Fragment Texas Red™ Conjugated . Lane 4: Reduced Rabbit IgM Whole Molecule . Load: 1 μ g for F(ab) and F(c); 1.2 μ g for IgG and IgM. Predicted/Observed size: IgG at 50 and 25 kDa; F(c) at 25 kDa; F(ab) at 25 kDa; IgM at 70 and 23 kDa. Observed F(c) Fragment migrates slightly higher.

Rabbit IgG F(c) Texas Red™ - Background

This product is designed for immunofluorescence microscopy, fluorescence based plate assays (FLISA) and fluorescent western blotting. This product is also suitable for multiplex analysis, including multicolor imaging, utilizing various commercial platforms.