

**Anti-Chicken IgG F(c) (Alkaline Phosphatase Conjugated) Secondary Antibody**  
**Rabbit Polyclonal, Alkaline Phosphatase (Calf Intestine)**  
**Catalog # ASR2943****Specification****Anti-Chicken IgG F(c) (Alkaline Phosphatase Conjugated) Secondary Antibody - Product Information**

Description	<b>Anti-CHICKEN IgG F(c) (RABBIT) Antibody</b>
Host	<b>Alkaline Phosphatase Conjugated</b>
Conjugate	<b>Rabbit</b>
Target Species	<b>Alkaline Phosphatase (Calf Intestine)</b>
Clonality	<b>Chicken</b>
Application	<b>Polyclonal</b>
Application Note	<b>WB, E, IC</b>
	<b>ELISA 1:5,000;Western Blot</b>
	<b>1:500-1:2,500;Immunochemistry</b>
	<b>1:200-1:1,000</b>
Physical State	<b>Liquid (sterile filtered)</b>
Host Isotype	<b>IgG</b>
Target Isotype	<b>IgG F(c)</b>
Buffer	<b>0.05 M Tris Chloride, 0.15M Sodium Chloride, 0.001M Magnesium Chloride, 0.0001M Zinc Chloride, 50% (v/v) Glycerol; pH 8.0</b>
Immunogen	<b>Chicken IgG F(c) fragment</b>
Stabilizer	<b>10 mg/mL Bovine Serum Albumin (BSA) - Immunoglobulin and Protease free</b>
Preservative	<b>0.1% (w/v) Sodium Azide</b>

**Anti-Chicken IgG F(c) (Alkaline Phosphatase Conjugated) Secondary Antibody - Additional Information****Shipping Condition**

Wet Ice

**Purity**

This product was prepared from monospecific antiserum by immunoaffinity chromatography using Chicken IgG coupled to agarose beads followed by solid phase adsorption(s) to remove any unwanted reactivities. Assay by immunoelectrophoresis resulted in a single precipitin arc against anti-Alkaline Phosphatase (calf intestine), anti-Rabbit Serum, Chicken IgG, Chicken IgG F(c) and Chicken Serum. No reaction was observed against Chicken IgG F(ab')<sub>2</sub>.

**Storage Condition**

Store vial at 4° C before opening. DO NOT FREEZE. This product is stable at 4° C as an undiluted liquid. Dilute only prior to immediate use. Freezing alkaline phosphatase conjugates will result in a substantial loss of enzymatic activity.

**Precautions Note**

This product is for research use only and is not intended for therapeutic or diagnostic applications.

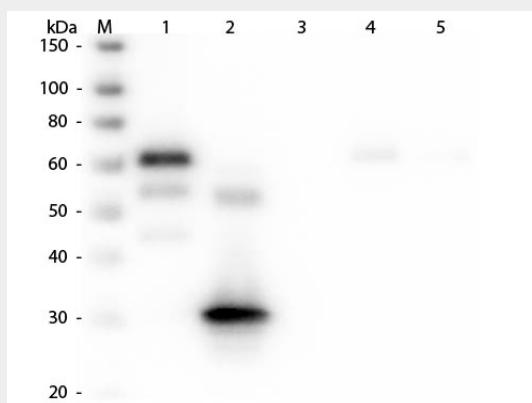
## **Anti-Chicken IgG F(c) (Alkaline Phosphatase Conjugated) Secondary Antibody - Protein Information**

## **Anti-Chicken IgG F(c) (Alkaline Phosphatase Conjugated) Secondary Antibody - Protocols**

Provided below are standard protocols that you may find useful for product applications.

- [Western Blot](#)
- [Blocking Peptides](#)
- [Dot Blot](#)
- [Immunohistochemistry](#)
- [Immunofluorescence](#)
- [Immunoprecipitation](#)
- [Flow Cytometry](#)
- [Cell Culture](#)

## **Anti-Chicken IgG F(c) (Alkaline Phosphatase Conjugated) Secondary Antibody - Images**



Western Blot of Anti-Chicken IgG F(c) (RABBIT) Antibody . Lane M: 3  $\mu$ l Molecular Ladder. Lane 1: Chicken IgG whole molecule . Lane 2: Chicken IgG F(c) Fragment . Lane 3: Chicken IgG F(ab) Fragment . Lane 4: Chicken IgM Whole Molecule . Lane 5: Chicken Serum . All samples were reduced. Load: 50 ng per lane. Block: MB-070 for 30 min at RT. Primary Antibody: Anti-Chicken IgG F(c) (RABBIT) Antibody 1:2,000 for 60 min at RT. Secondary antibody: Anti-Rabbit IgG (GOAT) Peroxidase Conjugated Antibody 1:40,000 in MB-070 for 30 min at RT. Predicted/Observed Size: 25 and 72 kDa for Chicken IgG and Serum, 25 kDa for F(c) and F(ab), 75 kDa for IgM. Chicken F(c) migrates slightly higher.

## **Anti-Chicken IgG F(c) (Alkaline Phosphatase Conjugated) Secondary Antibody - Background**

Anti-Chicken IgG Antibody detects specifically Chicken IgG F(c). Anti-Chicken IgG F(c) is ideal for investigators who routinely perform ELISA, Sandwich ELISA, titration assays, western-blot, immunoprecipitation and more generally immunoassays. Anti-Chicken IgG F(c) Antibody is ideal for investigators in Cancer, Immunology, and Microbiology research.