

Anti-Dog IgG F(c) (Alkaline Phosphatase Conjugated) Secondary Antibody
Rabbit Polyclonal, Alkaline Phosphatase (Calf Intestine)
Catalog # ASR2946**Specification****Anti-Dog IgG F(c) (Alkaline Phosphatase Conjugated) Secondary Antibody - Product Information**

Description	Anti-DOG IgG F(c) (RABBIT) Antibody Alkaline Phosphatase Conjugated
Host	Rabbit
Conjugate	Alkaline Phosphatase (Calf Intestine)
Target Species	Dog
Clonality	Polyclonal
Application	WB, E, IC
Application Note	ELISA 1:2,000-1:10,000;Western Blot 1:500-1:2,500;Immunochemistry 1:200-1:1,000
Physical State	Liquid (sterile filtered)
Host Isotype	IgG
Target Isotype	IgG F(c)
Buffer	0.05 M Tris Chloride, 0.15M Sodium Chloride, 0.001M Magnesium Chloride, 0.0001M Zinc Chloride, 50% (v/v) Glycerol; pH 8.0
Immunogen	Dog IgG F(c) fragment
Stabilizer	10 mg/mL Bovine Serum Albumin (BSA) - Immunoglobulin and Protease free
Preservative	0.1% (w/v) Sodium Azide

Anti-Dog IgG F(c) (Alkaline Phosphatase Conjugated) Secondary Antibody - Additional Information**Shipping Condition**

Wet Ice

Purity

This product was prepared from monospecific antiserum by immunoaffinity chromatography using Dog IgG coupled to agarose beads followed by solid phase adsorption(s) to remove any unwanted reactivities. Assay by immunoelectrophoresis resulted in a single precipitin arc against anti-Alkaline Phosphatase (calf intestine), anti-Rabbit Serum, Dog IgG, Dog IgG F(c) and Dog Serum. No reaction was observed against Dog IgG F(ab')₂.

Storage Condition

Store vial at 4° C before opening. DO NOT FREEZE. This product is stable at 4° C as an undiluted liquid. Dilute only prior to immediate use. Freezing alkaline phosphatase conjugates will result in a substantial loss of enzymatic activity.

Precautions Note

This product is for research use only and is not intended for therapeutic or diagnostic applications.

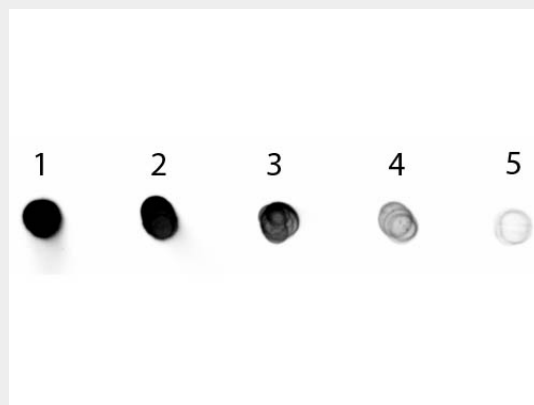
Anti-Dog IgG F(c) (Alkaline Phosphatase Conjugated) Secondary Antibody - Protein Information

Anti-Dog IgG F(c) (Alkaline Phosphatase Conjugated) Secondary Antibody - Protocols

Provided below are standard protocols that you may find useful for product applications.

- [Western Blot](#)
- [Blocking Peptides](#)
- [Dot Blot](#)
- [Immunohistochemistry](#)
- [Immunofluorescence](#)
- [Immunoprecipitation](#)
- [Flow Cytometry](#)
- [Cell Culture](#)

Anti-Dog IgG F(c) (Alkaline Phosphatase Conjugated) Secondary Antibody - Images



Dot Blot of Rabbit anti-Dog IgG Fc Antibody Alkaline Phosphatase Conjugated. Antigen: Dog IgG. Load: Lane 1 - 200 ng Lane 2 - 66.7 ng Lane 3 - 22.2 ng Lane 4 - 7.41 ng Lane 5 - 2.47 ng. Primary antibody: n/a. Secondary antibody: Rabbit anti-Dog IgG Fc Antibody Alkaline Phosphatase Conjugated at 1:1,000 for 1 HR at RT. Block: MB-070 for 1 HR at RT.